



Superior Clamping and Gripping



## Product Information

Universal gripper EGU

**Robust. Flexible. Intelligent.**

## Flexible universal gripper EGU

Versatile 2-finger universal gripper for maximum workpiece variety with maximum process robustness

### Field of application

Flexible loading and unloading of machine tools, assembly and joining tasks with additional process forces, and universal workpiece handling. The sealed design makes the gripper particularly suitable for use in harsh environments with contamination from chips or coolant.

### Advantages – Your benefits

**Versatile and productive** due to the large and freely programmable jaw stroke with continuous gripping force adjustment for flexible workpiece handling

**Robust and reliable** with sealed design and proven guidance particularly suitable for the harsh ambient conditions of machine loading

**Maximum process reliability** by avoiding workpiece loss due to integrated gripping force maintenance with loss detection

**Always referenced** both with an emergency stop and a power failure due to integrated absolute encoder

**100% gripping force without start-up distance** with almost constant gripping force over the entire finger length due to integrated spur gear

**Minimal integration effort** compatible with the leading manufacturers on the market due to a wide range of communication interfaces, as well as PLC function blocks and robot plug-ins



Sizes  
Quantity: 4



Weight  
1.44 .. 7.8 kg



Gripping force  
300 .. 3000 N

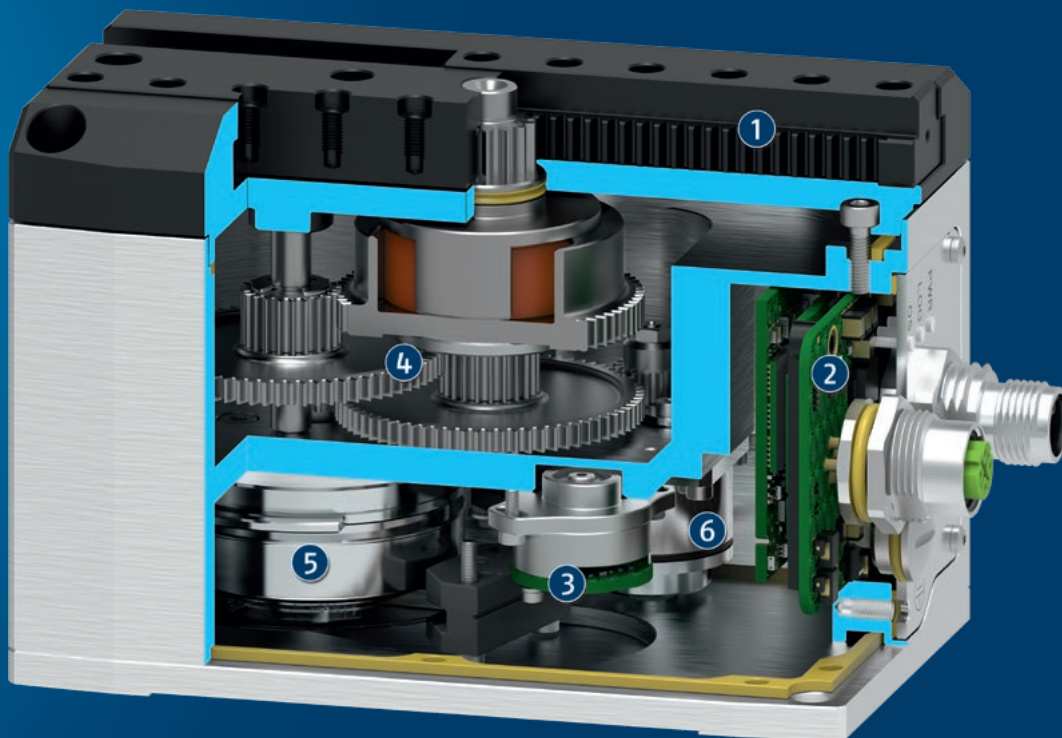


Stroke per jaw  
41 .. 80 mm

## Functional description

The user has access to the highest level of functionality due to the components embedded in the gripper. This allows the gripper fingers to be pre-positioned at high speed or for dipping into a workpiece holder. The gripping force can be continuously adjusted to the workpiece handling requirement. Workpiece recognition enables full process transparency for the user. In an emergency stop situation, workpiece loss can be avoided due to the integrated gripping force maintenance.

The BasicGrip and StrongGrip gripping modes are available. With BasicGrip continuous operation of the motor and thus permanent re-gripping of the workpiece is possible. The gripping speed is automatically optimized for gripping force adjustment. With StrongGrip, the maximum gripping force is generated and then stored by the gripping force maintenance. Permanent regripping is possible within an adjustable time frame.



- ① **Sturdy and resistant T-slot guidance**  
for large finger lengths, external forces and moments.  
Optionally available as dust-tight version.
- ② **Fully integrated and sealed control and power electronics**  
with status LEDs and M12 plug connectors for connecting the  
voltage supply and communication.
- ③ **High-resolution, output-side absolute encoder**  
for precise positioning of the gripper jaws with permanent  
absolute position feedback.
- ④ **Sealed drive train with spur gear and pinion/rack principle**  
for a nearly constant acting gripping force over the entire  
finger length, without a minimum approach distance.
- ⑤ **Brushless flat motor**  
for limited space and high torques due to external rotor.
- ⑥ **Electromagnetic brake**  
with additional mechanism for maintaining gripping force and  
position during standstill or power failure.

## Detailed functional description

### Increased protection class with dust-tight version SD



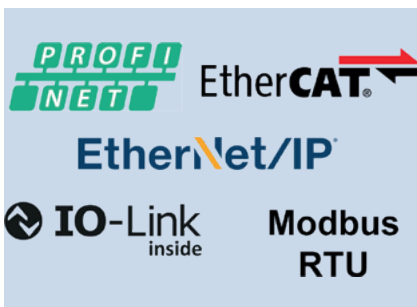
The dust-tight version increases the degree of protection against dust and liquids entering the guidance and base jaw. In combination with the sealed electronics (IP67), the dust-tight version is thus suitable for use in particularly harsh ambient conditions, such as for loading a grinding machine. The achieved protection of the guidance corresponds to the IP64 protection class and is thus absolutely dust-tight and protected against splashing water from all directions. You can find additional information on the product in the operating manual.

### Mounting option for additional attachment



Additional threads and fittings are located in the guidance housing for mounting an application-specific design in order to implement additional functions. For example, a spring-loaded pressure element can be mounted to center the workpiece.

### Connectivity



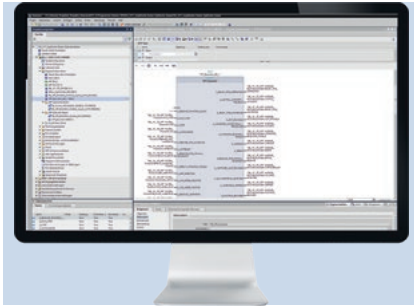
A wide range of available communication interfaces simplifies handling with a wide variety of control and robot manufacturers and ensures time savings during integration. Industrial Ethernet (PROFINET, EtherCAT, EtherNet/IP) enables direct integration without additional gateways into the control environment of leading PLC manufacturers on the market. With the Modbus RTU serial interface, the gripper can be connected to the tool flange of leading robot manufacturers without external cable routing. IO-Link is independent and offers flexibility in connecting to other networks.

### Software Service – Robot integration



For seamless interaction between gripper and robot, software modules for integration into the robot control system of leading manufacturers are available. This means that the gripper's range of functions can be used directly without any additional programming effort and programming of the application can be started immediately. Robot compatibility (partially only available on request): Universal Robots e-Series via Modbus RTU, FANUC CRX via Modbus RTU, ABB OmniCore C30 via EtherNet/IP, YASKAWA YRC1000micro via EtherNet/IP. Software, other compatibility notes and documentation can be downloaded at [www.schunk.com/egu-software](http://www.schunk.com/egu-software).

## Software Service – PLC integration



For seamless interaction between gripper and PLC control, function modules for the programming interface of leading manufacturers is available. This means that the gripper's range of functions can be used directly without any additional programming effort and programming of the application can be started immediately. PLC compatibility (partially only available on request): Siemens TIA Portal (PROFINET and IO-Link), Beckhoff TwinCAT (EtherCAT and IO-Link), Allen Bradley Studio 5000 Logix Designer (EtherNet/IP and IO-Link) Software and other compatibility notes can be downloaded at [schunk.com/egu-software](http://schunk.com/egu-software).

## Software Service – Commissioning Software MTSN2



MTSN2 offers a wide range of functions and supports the user by easing the commissioning and parameterization effort. In addition, further functions such as address assignment, diagnostics, firmware update, parameter backup and bus monitor are available. MTSN2 enables user-friendly use of all gripper functions without the need for a PLC. In this way, initial application validations can be carried out in an uncomplicated manner. The gripper is directly connected to the computer via the network interface. MTSN2 is compatible with Windows and can be downloaded at [schunk.com/egu-software](http://schunk.com/egu-software).



### General notes about the series

**Housing material:** Aluminum alloy, anodized

**Base jaw material:** Steel, corrosion-protected

**Warranty:** 24 months or 5 million cycles BasicGrip / 3 million cycles StrongGrip (one cycle consists of a complete gripping process: "Open gripper" and "Close gripper")

**Scope of delivery:** Gripper including mounting instructions and accessory kit with centering sleeves for gripper mounting and finger mounting. Additional digital services are available at [schunk.com/egu-software](http://schunk.com/egu-software).

**Gripping force:** is the arithmetic sum of the individual force applied to each jaw at distance P (see illustration).

**Repeat accuracy (gripping):** defined as the spread of the actual position during 100 consecutive closing or opening movements on a rigid workpiece or a fixed workpiece stop under constant conditions.

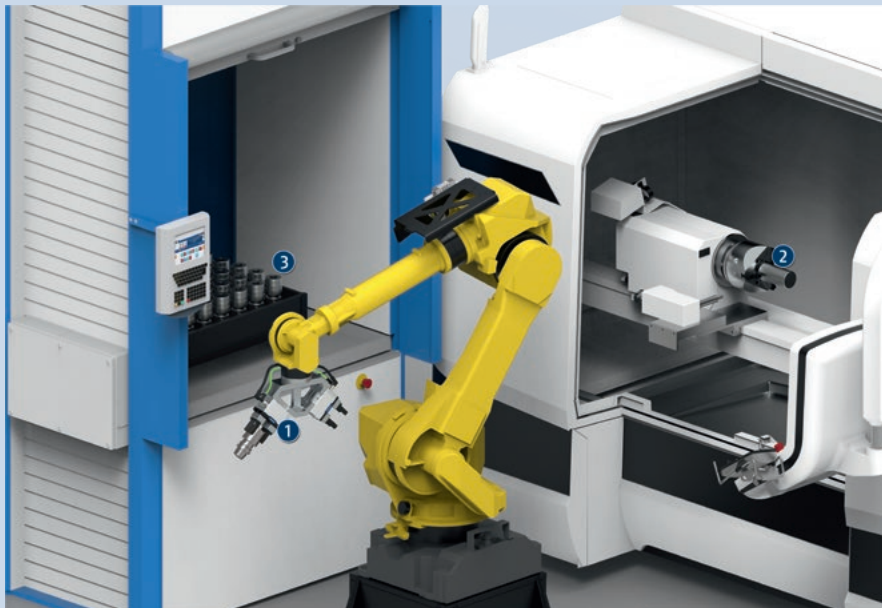
**Repeat accuracy (positioning, unidirectional):** defined as the spread of the actual position per base jaw during 100 consecutive movements to a target position from the same direction under constant conditions.

**Repeat accuracy (positioning, bi-directional):** defined as the distribution of the actual position per base jaw during 100 consecutive movements to a target position from both directions under constant conditions.

**Finger length:** is measured from the reference surface as the distance P in direction to the main axis.

**Closing and opening times (positioning):** Closing and opening times are only the movement times of the fingers at max. speed, as well as max. acceleration with observance of the max. permissible mass per finger and refer to the traverse path per jaw and 30 mm stroke.

**Max. speed (positioning) and max. acceleration:** is the arithmetic sum of the velocity and acceleration acting on each jaw.



### Application example

Flexible, cycle-time optimized loading and unloading of a machine tool. By using two grippers on the robot, the machine tool can be automatically loaded in a way that is optimized for the cycle time, and productivity can be increased. Finished part and pre-machined part can be transported in one loading cycle. The automated high-bay warehouse contains pallets with various sizes of semi-finished and finished parts. Due to the large and freely programmable jaw stroke of the gripper, different diameters can be gripped without having to change the gripper.

- ① Universal gripper EGU for unfinished and finished part handling
- ② Machine tool with power lathe chuck ROTA
- ③ Automated high bay warehouse

## SCHUNK offers more ...

The following components make the product even more productive – the suitable addition for the highest functionality, flexibility, reliability, and controlled production.



Power cable



Communication cables



Intermediate jaw



Robot adaptation kits



Customizable gripper fingers



Finger blank



Jaw quick-change system

① For more information on these products can be found on the following product pages or at [schunk.com](http://schunk.com).

## Options and special information

**Gripping modes:** The BasicGrip and StrongGrip gripping modes are available. With BasicGrip continuous operation of the motor and thus permanent re-gripping of the workpiece is possible. The gripping speed is automatically optimized for gripping force adjustment. With StrongGrip, the maximum gripping force is generated and then stored by the gripping force maintenance. Permanent regripping is possible within an adjustable time frame. In addition, defined pause times and maximum ambient temperatures must be taken into account in StrongGrip mode. Further details can be found in the operating manual.

**Gripping force maintenance device:** In the event of an emergency stop or a voltage drop, more than 80% of the originally applied gripping force can be reliably maintained due to a combination of an electric holding brake and the initial tension of the elastic element. If the gripping force and position maintenance is activated preventatively, 100% of the originally applied gripping force can be maintained. Overrun of the gripper fingers when removing the workpiece is a few millimeters and depends on the gripping force generated. Variants without gripping force maintenance are also available as an option.

**Seal:** The gripper has increased protection against the ingress of dust or liquids by default. The IP protection of the electronics is only given if the plug connectors have been mounted properly. The gearbox of the gripper is additionally protected by a seal on the main shaft.

**Interface of the base jaws:** When using the intermediate jaw, the interface of the base jaws corresponds to that of the universal gripper PGN-plus-P. This means that the extensive range of finger accessories for the PGN-plus-P can also be used for this gripper, taking into account the interfering contours, and the application limits that apply.

Ordering example

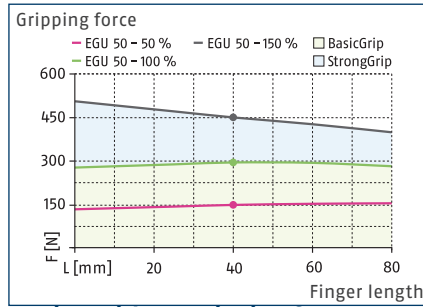
	EGU	50	-	PN	-	M	-	B
Description								
EGU								
Size								
50								
60								
70								
80								
Communication interface								
PN = PROFINET								
EI = EtherNet/IP								
EC = EtherCAT								
IL = IO-Link								
MB = Modbus RTU								
Gripping force maintenance device								
M = with gripping force maintenance								
N = without gripping force maintenance								
Version								
B = Basic version								
SD = Dustproof version								



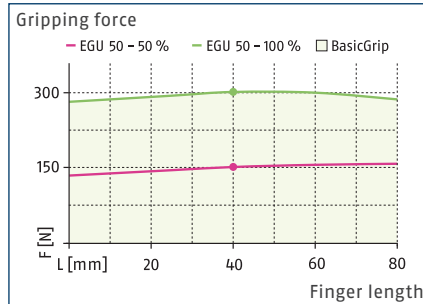




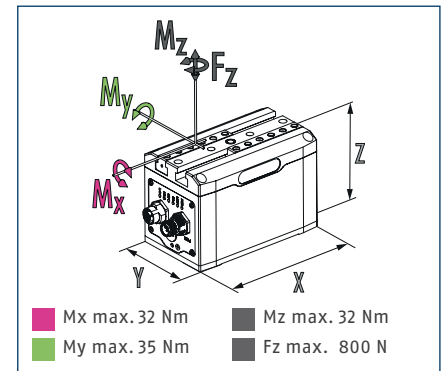
### Version with gripping force maintenance device



### Version without gripping force maintenance



### Dimensions and maximum loads



① The indicated moments and forces are static values, apply for each base jaw and may appear simultaneously. Loads may additionally occur to the moment produced by the gripping force itself.

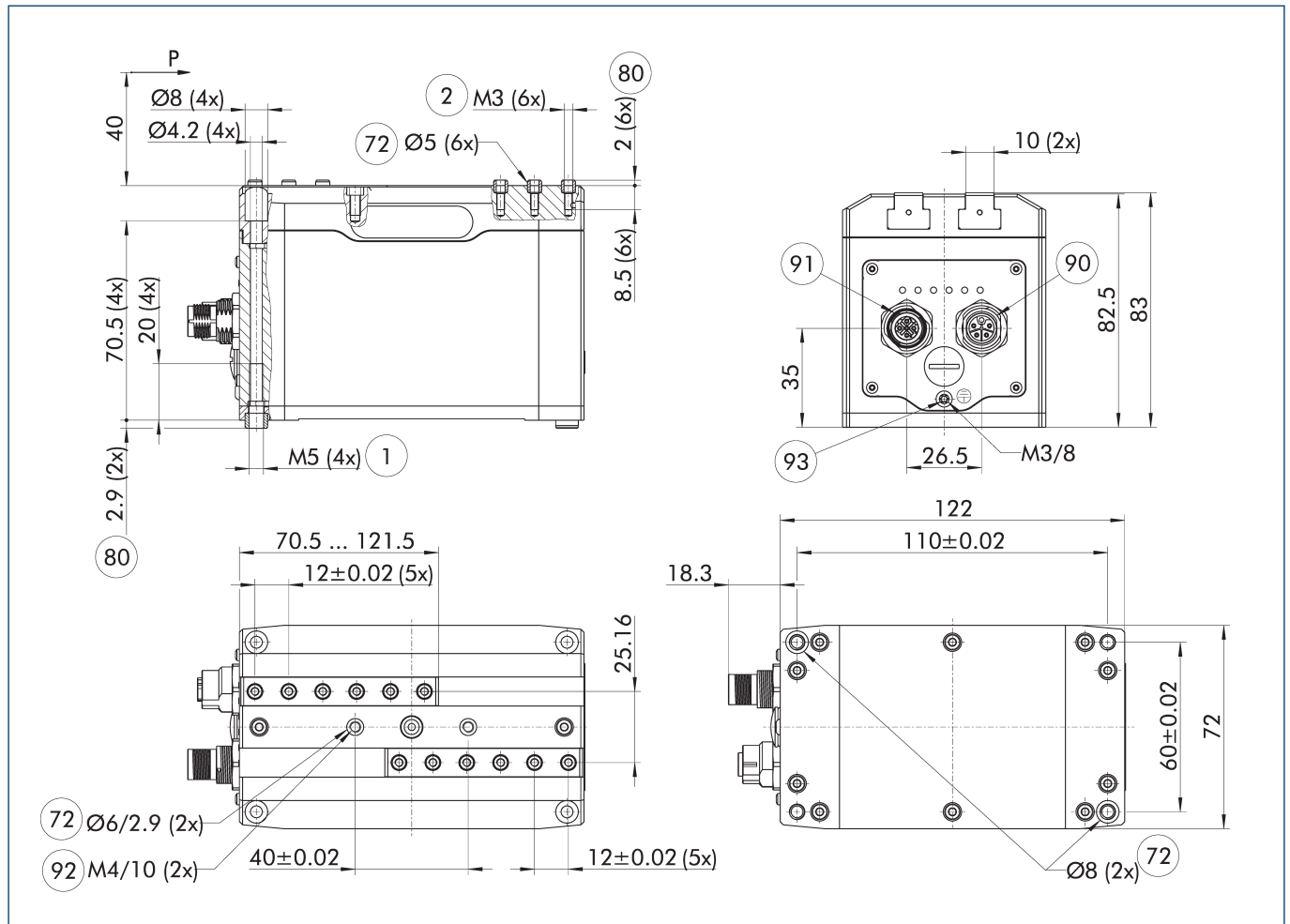
### Technical data EGU with gripping force maintenance

Description		EGU 50-PN-M-B	EGU 50-EI-M-B	EGU 50-EC-M-B	EGU 50-IL-M-B	EGU 50-MB-M-B
ID		1491537	1491540	1491546	1491532	1491535
<b>General operating data</b>						
Stroke per jaw	[mm]	51	51	51	51	51
Min./max. gripping force	[N]	150/450	150/450	150/450	150/450	150/450
Min./max. gripping force maintenance	[%]	90/100	90/100	90/100	90/100	90/100
Max. permissible finger length	[mm]	80	80	80	80	80
Max. permissible weight per finger	[kg]	0.4	0.4	0.4	0.4	0.4
Repeat accuracy (gripping)	[mm]	0.02	0.02	0.02	0.02	0.02
Repeat accuracy (positioning, unidirectional)	[mm]	0.05	0.05	0.05	0.05	0.05
Repeat accuracy (positioning, bi-directional)	[mm]	0.15	0.15	0.15	0.15	0.15
Closing/opening time (positioning, 30 mm stroke)	[s]	0.8/0.8	0.8/0.8	0.8/0.8	0.8/0.8	0.8/0.8
Max. speed (positioning)	[mm/s]	110	110	110	110	110
Max. acceleration	[mm/s²]	800	800	800	800	800
Weight	[kg]	1.49	1.49	1.49	1.49	1.49
Min./max. ambient temperature	[°C]	5/55	5/55	5/55	5/55	5/55
IP protection class, electronics		67	67	67	67	67
IP protection class guide/base jaws		40	40	40	40	40
Cleanroom class ISO 14644-1:2015		5	5	5	5	5
<b>Electrical operating data</b>						
Nominal voltage	[V]	24	24	24	24	24
Communication interface		PROFINET	EtherNet/IP	EtherCAT	IO-Link	Modbus RTU
BasicGrip nominal/max. current consumption	[A]	0.3/1.44	0.3/1.44	0.3/1.44	0.3/1.44	0.3/1.44
StrongGrip nominal/max. current consumption	[A]	0.48/0.72	0.48/0.72	0.48/0.72	0.48/0.72	0.48/0.72
Logic nominal/max. current consumption	[A]	0.16/0.2	0.16/0.2	0.16/0.2	0.16/0.2	0.16/0.2
<b>Options and their characteristics</b>						
Dustproof version		1504558	1504580	1504582	1504554	1504556
IP protection class guide/base jaws		64	64	64	64	64
Stroke per jaw	[mm]	41	41	41	41	41
Min./max. gripping force	[N]	210/450	210/450	210/450	210/450	210/450
Weight	[kg]	1.52	1.52	1.52	1.52	1.52
Cleanroom class ISO 14644-1:2015		5	5	5	5	5

**Technical data EGU without gripping force maintenance**

Description		EGU 50-PN-N-B	EGU 50-EI-N-B	EGU 50-EC-N-B	EGU 50-IL-N-B	EGU 50-MB-N-B
ID		1491538	1491541	1491547	1491533	1491536
<b>General operating data</b>						
Stroke per jaw	[mm]	51	51	51	51	51
Min./max. gripping force	[N]	150/300	150/300	150/300	150/300	150/300
Max. permissible finger length	[mm]	80	80	80	80	80
Max. permissible weight per finger	[kg]	0.4	0.4	0.4	0.4	0.4
Repeat accuracy (gripping)	[mm]	0.02	0.02	0.02	0.02	0.02
Repeat accuracy (positioning, unidirectional)	[mm]	0.05	0.05	0.05	0.05	0.05
Repeat accuracy (positioning, bi-directional)	[mm]	0.15	0.15	0.15	0.15	0.15
Closing/opening time (positioning, 30 mm stroke)	[s]	0.8/0.8	0.8/0.8	0.8/0.8	0.8/0.8	0.8/0.8
Max. speed (positioning)	[mm/s]	110	110	110	110	110
Max. acceleration	[mm/s <sup>2</sup> ]	800	800	800	800	800
Weight	[kg]	1.44	1.44	1.44	1.44	1.44
Min./max. ambient temperature	[°C]	5/55	5/55	5/55	5/55	5/55
IP protection class, electronics		67	67	67	67	67
IP protection class guide/base jaws		40	40	40	40	40
Cleanroom class ISO 14644-1:2015		5	5	5	5	5
<b>Electrical operating data</b>						
Nominal voltage	[V]	24	24	24	24	24
Communication interface		PROFINET	EtherNet/IP	EtherCAT	IO-Link	Modbus RTU
BasicGrip nominal/max. current consumption	[A]	0.24/1.23	0.24/1.23	0.24/1.23	0.24/1.23	0.24/1.23
Logic nominal/max. current consumption	[A]	0.16/0.2	0.16/0.2	0.16/0.2	0.16/0.2	0.16/0.2
<b>Options and their characteristics</b>						
Dustproof version		1504559	1504581	1504583	1504555	1504557
IP protection class guide/base jaws		64	64	64	64	64
Stroke per jaw	[mm]	41	41	41	41	41
Min./max. gripping force	[N]	210/300	210/300	210/300	210/300	210/300
Weight	[kg]	1.47	1.47	1.47	1.47	1.47
Cleanroom class ISO 14644-1:2015		5	5	5	5	5

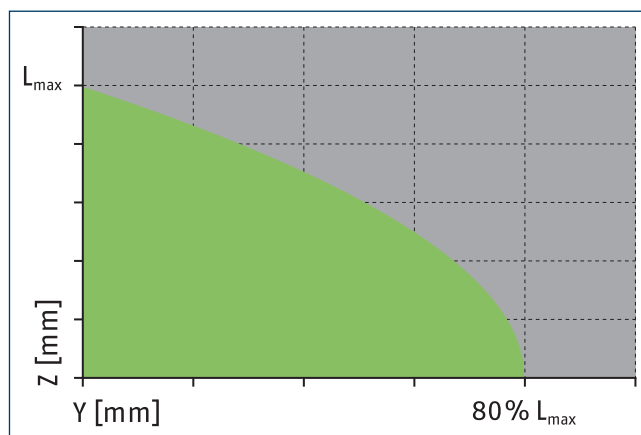
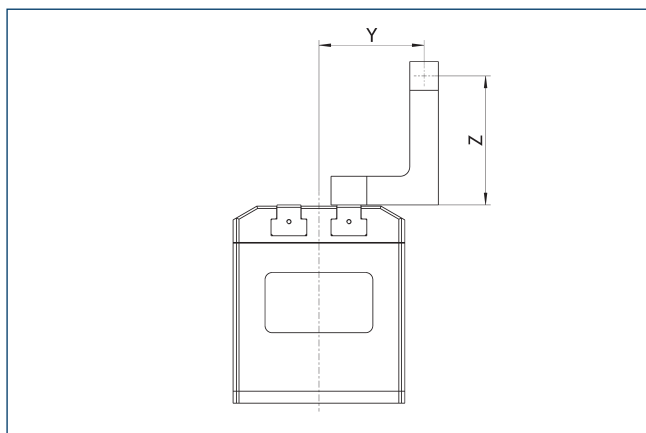
### Main view



The drawing shows the gripper in PROFINET, EtherNet/IP or EtherCAT version, with and without gripper force maintenance with opened jaws.

- ① Gripper connection
- ② Finger connection
- 72 Fit for centering sleeves
- 80 Depth of the centering sleeve hole in the counter part
- 90 Voltage supply (M12, connector, 4 pin, L-coded)
- 91 Communication (M12, socket, 4 pin, D-coded)
- 92 Screw connection with fittings for additional attachment (these centering sleeves are not included in the scope of delivery)
- 93 Functional ground connection

### Maximum permitted finger projection

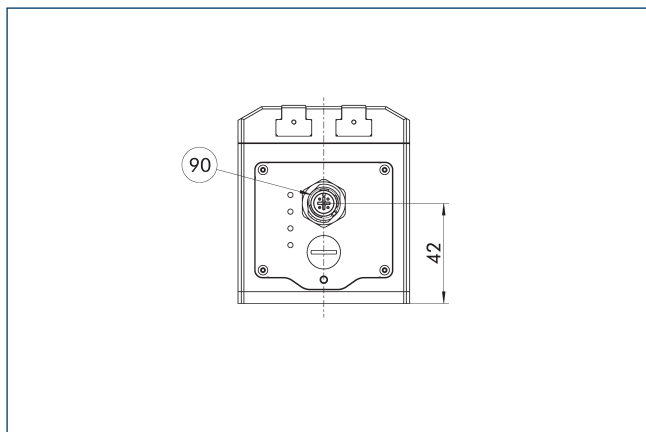


■ Permitted range

■ Inadmissible range

$L_{max}$  is equivalent to the maximum permitted finger length, see the technical data table.

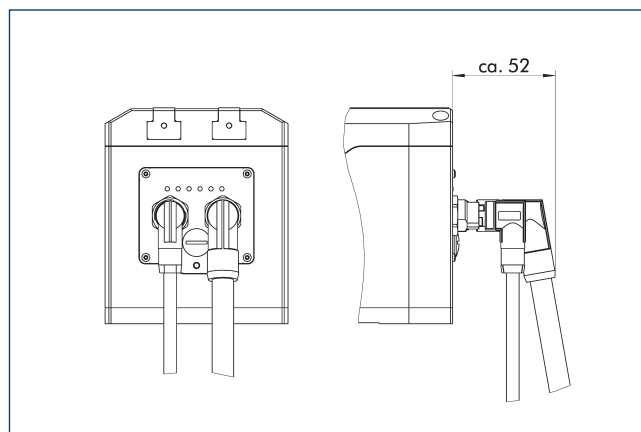
### IO-Link and Modbus RTU version



- 90 Voltage supply and communication (M12, connector, A-coded, IL: 5 pin, MB: 4 pin)

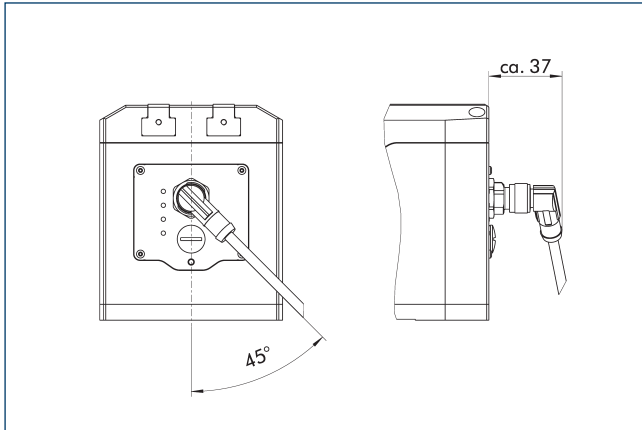
The drawing shows the changes in dimension of the IO-Link and Modbus RTU versions compared to the basic version found in the main view.

### Angled plug connectors for PROFINET, EtherNet/IP and EtherCAT version



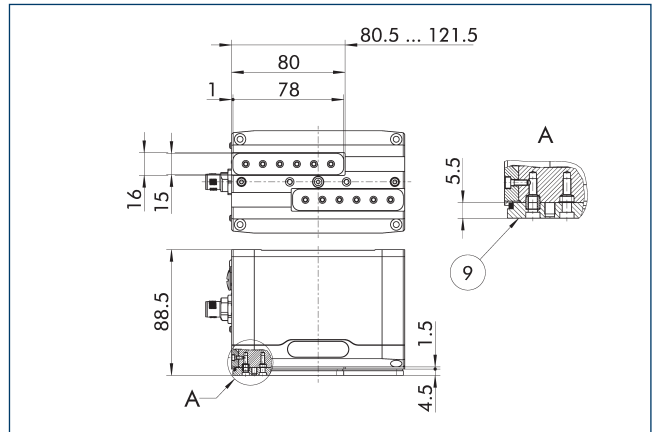
The drawing shows the direction of the cable outlet when using angled connectors. The distance from the plug connector to the gripper housing may vary depending on the cable manufacturer used.

### Angled plug connectors for IO-Link and Modbus RTU version



The drawing shows the direction of the cable outlet when using angled connectors. The distance from the plug connector to the gripper housing may vary depending on the cable manufacturer used.

### Dustproof version

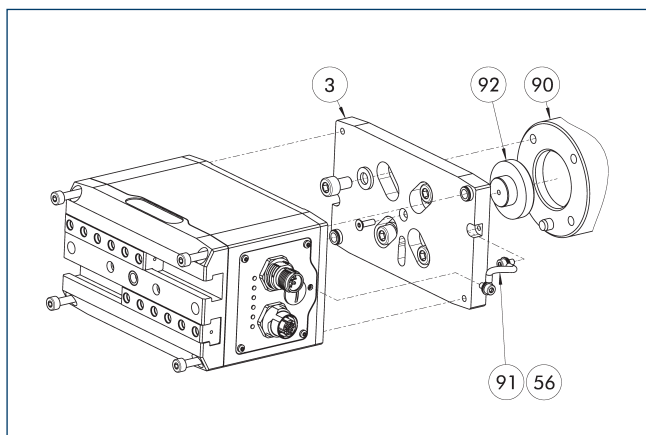


⑨ For mounting screw connection diagram, see basic version

The "dustproof" option increases the degree of protection against penetrating substances. The assembly diagram shifts by the height of the intermediate jaw. The finger length is still measured from the upper edge of the gripper housing.



## Robot adaptation packages single gripper

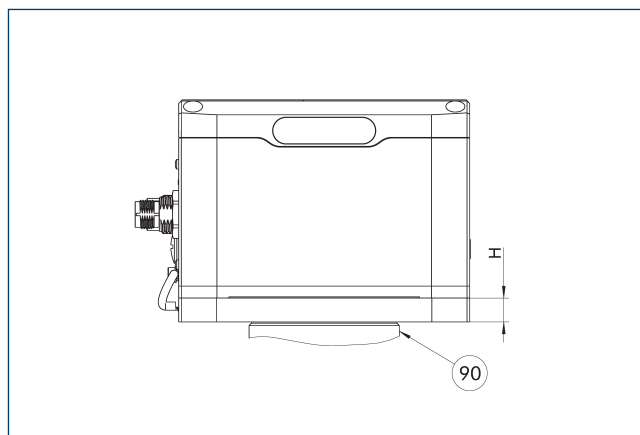


- ③ Adapter
- ⑤⑥ Included in the scope of delivery
- ⑨⑩ Robot flange
- ⑨① Cable functional ground
- ⑨② Centering disc

Robot adaptation packages for single grippers contain all components required to mechanically adapt the gripper to the desired robot flange. Depending on the flange pattern, suitable screws, centering pins and the centering collar are included.

Description	ID	Height	DIN ISO-9409 bolt circle	Manufacturer	Model
		[mm]	[mm]		
Adapter					
AKO EGU50/GP12	1524670	11		YASKAWA	GP12
AKO EGU50/GP7,8	1524659	10.5		YASKAWA	GP7, GP8
AKO EGU50/ISO31.5	1524650	10.5	31.5	ABB	SWIFTI CRB1100, IRB1100, IRB1200
AKO EGU50/ISO40	1524653	10.5	40	ABB	IRB1300
AKO EGU50/ISO50	1524658	10.5	50	Universal Robots	UR5e, UR10e, UR16e
AKO EGU50/ISO50	1524658	10.5	50	FANUC	CRX-5iA, CRX-10iA, CRX-20iA, CRX-25iA
AKO EGU50/ISO50	1524658	10.5	50	ABB	GoFa CRB15000
AKO EGU50/ISO50	1524658	10.5	50	YASKAWA	HC10DTP, HC20DTP

## Robot adaptation packages single gripper

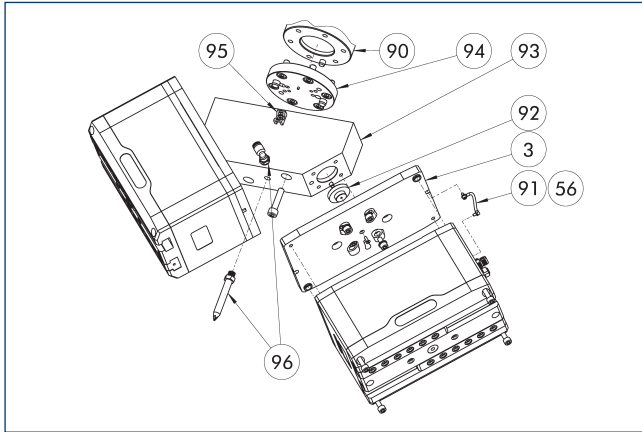


- ⑨⑩ Robot flange

The single-piece design enables a flat construction of the entire system. The adapter is manufactured from blank aluminum. The listed robot manufacturers with their associated models constitute useful recommendations taking the total mass into account. SCHUNK nevertheless recommends that the payload of the robot will be considered in detail.

Description	ID	Height	DIN ISO-9409 bolt circle	Manufacturer	Model
		[mm]	[mm]		
Adapter					
AKO EGU50/GP12	1524670	11		YASKAWA	GP12
AKO EGU50/GP7,8	1524659	10.5		YASKAWA	GP7, GP8
AKO EGU50/ISO31.5	1524650	10.5	31.5	ABB	SWIFTI CRB1100, IRB1100, IRB1200
AKO EGU50/ISO40	1524653	10.5	40	ABB	IRB1300
AKO EGU50/ISO50	1524658	10.5	50	Universal Robots	UR5e, UR10e, UR16e
AKO EGU50/ISO50	1524658	10.5	50	FANUC	CRX-5iA, CRX-10iA, CRX-20iA, CRX-25iA
AKO EGU50/ISO50	1524658	10.5	50	ABB	GoFa CRB15000
AKO EGU50/ISO50	1524658	10.5	50	YASKAWA	HC10DTP, HC20DTP

### Robot adaptation packages double gripper

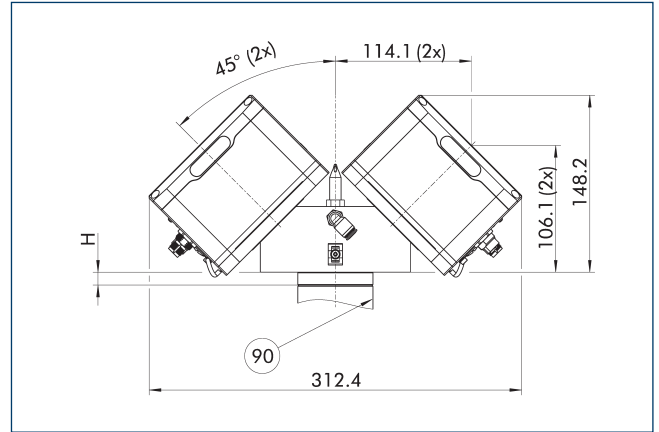


- ③ Adapter
- ⑤⑥ Included in the scope of delivery
- ⑨⑩ Robot flange
- ⑨① Cable functional ground
- ⑨② Centering collar gripper
- ⑨③ angle adapter
- ⑨④ Adapter robot
- ⑨⑤ Cable holder (included in the scope of delivery of the cable package)
- ⑨⑥ Attachment set blow-off nozzle

Robot adaptation packages for double grippers contain all components required to mechanically adapt two grippers to the desired robot flange. Depending on the flange pattern, suitable screws, centering pins and centering material are included in the delivery. A short or long blow-off nozzle can be added as an option.

Description	ID	Height	DIN ISO-9409 bolt circle	Manufacturer	Model
		[mm]	[mm]		
Adapter					
AKO 2xEGU50/ GP12	1524754	15.8		YASKAWA	GP12
AKO 2xEGU50/ ISO50	1524743	10.8	50	Universal Robots	UR10e, UR16e
AKO 2xEGU50/ ISO50	1524743	10.8	50	FANUC	CRX-10iA, CRX-20iA, CRX-25iA
AKO 2xEGU50/ ISO50	1524743	10.8	50	YASKAWA	HC10DTP, HC20DTP
AKO 2xEGU50/ ISO63	1524747	14.8	63		
AKO 2xEGU50/ ISO80	1524752	14.8	80	Universal Robots	UR20
Attachment set blow-off nozzle (short)	1524788				

### Robot adaptation packages double gripper



- ⑨⑩ Robot flange

The adapter is manufactured from blank aluminum. The listed robot manufacturers with their associated models constitute useful recommendations taking the total mass into account. SCHUNK nevertheless recommends that the payload of the robot will be considered in detail.

Description	ID	Height	DIN ISO-9409 bolt circle	Manufacturer	Model
		[mm]	[mm]		
Adapter					
AKO 2xEGU50/ GP12	1524754	15.8		YASKAWA	GP12
AKO 2xEGU50/ ISO50	1524743	10.8	50	Universal Robots	UR10e, UR16e
AKO 2xEGU50/ ISO50	1524743	10.8	50	FANUC	CRX-10iA, CRX-20iA, CRX-25iA
AKO 2xEGU50/ ISO50	1524743	10.8	50	YASKAWA	HC10DTP, HC20DTP
AKO 2xEGU50/ ISO63	1524747	14.8	63		
AKO 2xEGU50/ ISO80	1524752	14.8	80	Universal Robots	UR20

## Robot-specific connection cables

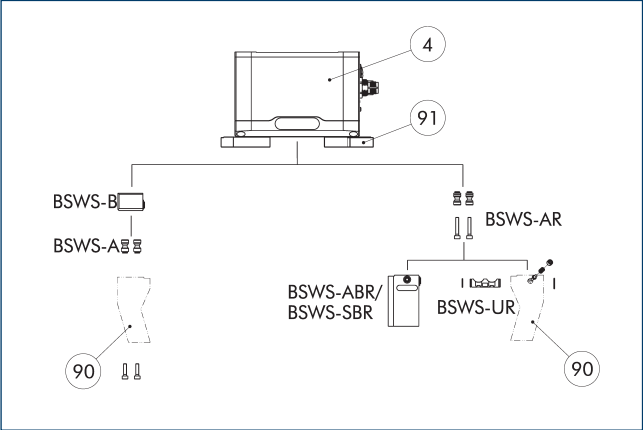


Connection cables and connection cable kits for electrical connection to specific robot models and controllers. Depending on the manufacturer, a direct connection to the tool flange is possible or external cabling is required. In combination with mechanical adapters and software modules, this allows commissioning on the robot to be carried out in just a few steps. Cables for external cable routing are designed to withstand torsion.

Description	ID	Manufacturer	Series	Model	Controller	Connection	Cable length [m]	Interface
Double gripper								
EGU/EGK CNK-DG-FANUC-CRX	1532241	FANUC	CRX	CRX-5iA, CRX-10iA, CRX-20iA, CRX-25iA	R-30iB Plus Mini	Tool, internal feed-through		Modbus RTU
EGU/EGK CNK-DG-UR-eSeries	1532238	Universal Robots	e-Series	UR3e, UR5e, UR10e, UR16e	CB5	Tool, internal feed-through		Modbus RTU
EGU CNK-DG-ABB-OmniCoreC30	1529608	ABB	IRB, CRB		OmniCore C30	Controller, external cable routing	5	EtherNet/IP
EGU CNK-DG-YASKAWA-YRC1000micro	1529621	YASKAWA	GP, HC		YRC1000MICRO	Controller, external cable routing	5	EtherNet/IP
Single gripper								
EGU/EGK CNK-SG-FANUC-CRX	1532240	FANUC	CRX	CRX-5iA, CRX-10iA, CRX-20iA, CRX-25iA	R-30iB Plus Mini	Tool, internal feed-through		Modbus RTU
EGU/EGK CNK-SG-UR-eSeries	1532237	Universal Robots	e-Series	UR3e, UR5e, UR10e, UR16e	CB5	Tool, internal feed-through		Modbus RTU
EGU CNK-SG-ABB-OmniCoreC30	1529600	ABB	IRB, CRB		OmniCore C30	Controller, external cable routing	5	EtherNet/IP
EGU CNK-SG-YASKAWA-YRC1000micro	1529619	YASKAWA	GP, HC		YRC1000MICRO	Tool, internal feed-through	5	EtherNet/IP

① The performance data of the robot must be taken into account. SCHUNK also recommends the use of a suitable strain relief.

BSWS jaw quick-change jaw systems



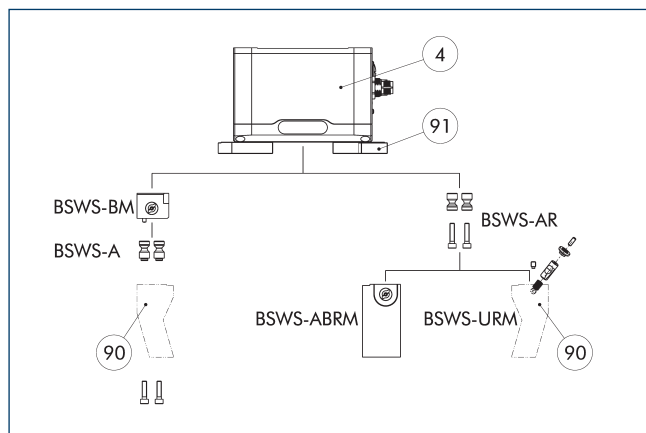
- ④ Grippers
- ⑨① Intermediate jaw
- ⑨① Customized gripper fingers

There are various jaw quick-change systems available for the gripper. For detailed information, please refer to the corresponding product.

Description	ID	Scope of delivery
Jaw quick-change system adapter pin		
BSWS-A 64	0303022	2
BSWS-AR 64	0300092	2
Quick-change jaw system base		
BSWS-B 64	0303023	1
Jaw quick-change system finger blank		
BSWS-ABR-PGZN-plus 64	0300072	1
BSWS-SBR-PGZN-plus 64	0300082	1
Jaw quick-change system locking mechanism		
BSWS-UR 64	0302991	1

① Only systems that are listed in the table, can be used.

## Jaw quick-change system BSWS-M



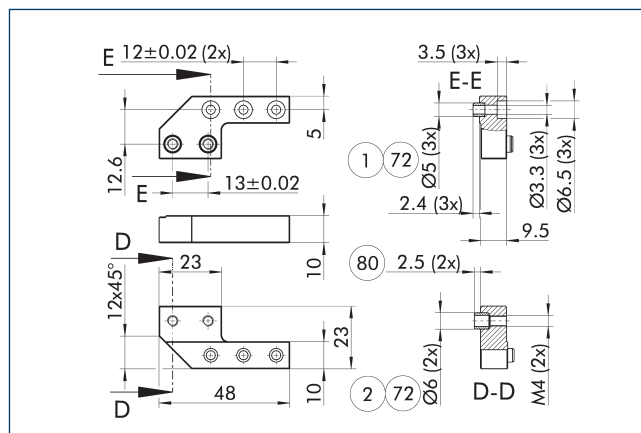
- ④ Grippers  
⑨① Intermediate jaw  
⑨② Customized gripper fingers

There are various jaw quick-change systems available for the gripper. For detailed information, please refer to the corresponding product.

Description	ID	Scope of delivery
<b>Jaw quick-change system adapter pin</b>		
BSWS-A 64	0303022	2
BSWS-AR 64	0300092	2
<b>Quick-change jaw system base</b>		
BSWS-BM 64	1313900	1
<b>Jaw quick-change system finger blank</b>		
BSWS-ABRM-PGZN-plus 64	1420851	1
<b>Jaw quick-change system locking mechanism</b>		
BSWS-URM 64	1398401	1

① Only systems that are listed in the table, can be used.

## Intermediate jaw ZBA-EGU 50

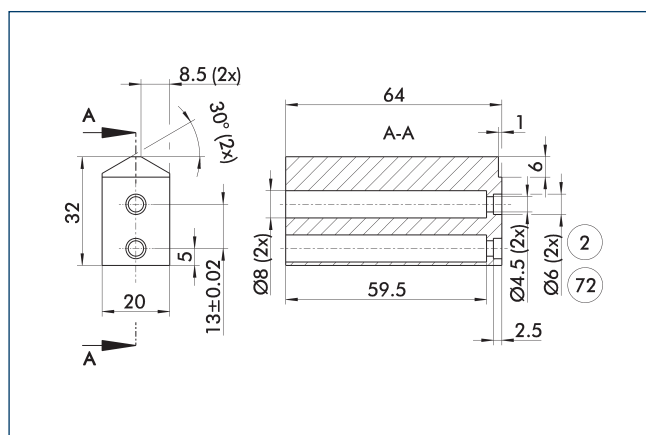


- ① Gripper connection  
② Finger connection  
⑦② Fit for centering sleeves  
⑧② Depth of the centering sleeve hole in the counter part

The intermediate jaws offset the side offset of the base jaws in the Y direction and enable an aligned connection. During use, the interface of the base jaws corresponds to that of the universal gripper PGN-plus-P. This means that the extensive range of finger accessories for the PGN-plus-P can also be used for this gripper, taking into account the interfering contours, and the application limits that apply.

Description	ID	Material	Scope of delivery
<b>Intermediate jaw</b>			
ZBA EGU 50	1504612	Steel, corrosion-protected	2

## Finger blanks ABR/SBR-PGZN-plus 64



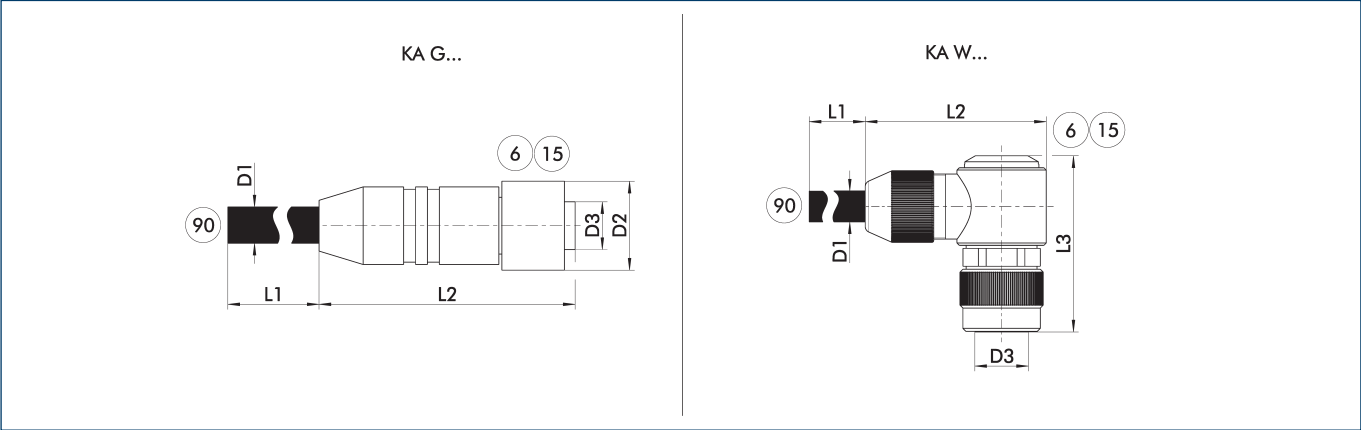
- ② Finger connection  
⑦② Fit for centering sleeves

The drawing shows the finger blank which can be reworked by the customer.

Description	ID	Material	Scope of delivery
<b>Finger blank</b>			
ABR-PGZN-plus 64	0300010	Aluminum (3.4365)	1
SBR-PGZN-plus 64	0300020	Steel (1.7131)	1

① In the PGL-plus-P gripper series, the use of finger blanks results in a limitation of the closing stroke. Please check this in detail in advance using the CAD data and adjust the reworking of the fingers accordingly.

Voltage supply connection cable



KA G... Connection cable with straight plug connector  
KA W... Connection cable with angled plug connector

⑥ Connection module side  
⑮ Socket

⑨⑩ Cable end with open wire strands

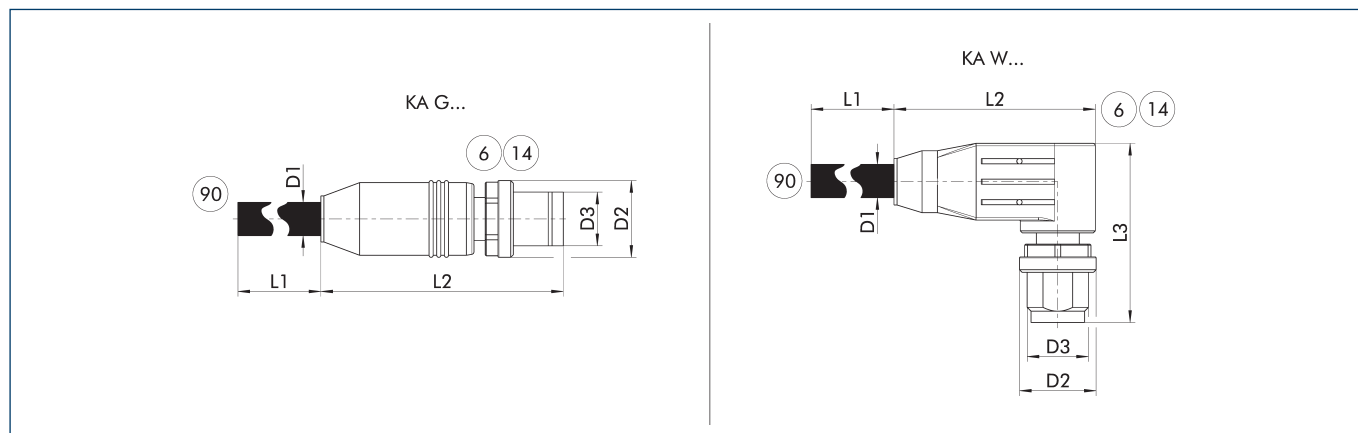
The connection cables are used to connect the SCHUNK product to the voltage supply.

Description	ID	L1	D1	L2	D2	L3	D3
		[m]	[mm]	[mm]	[mm]	[mm]	
Voltage supply connection cable – drag chain and torsion resistant M12 socket, straight							
KA GLN12L04-LK-00500-A	1502019	5	7.2	53.5	18		M12 L-coded
KA GLN12L04-LK-01000-A	1502023	10	7.2	53.5	18		M12 L-coded
Voltage supply connection cable – drag chain and torsion resistant M12 socket, angled							
KA WLN12L04-LK-00500-A	1502028	5	7.2	49	18	40	M12 L-coded
KA WLN12L04-LK-01000-A	1502032	10	7.2	49	18	40	M12 L-coded

① Please observe the min. bending radius for cable track-compatible cables or the max. torsion angle for torsion-compatible cables. These are generally 10 times the cable diameter or +/- 180°/m. Please refer to the product documentation for information about max. cable length and min. wire cross section.



## Connection cable communication PROFINET, EtherNet/IP and EtherCAT



KA G... Straight plug connector

KA W... Angular plug connector

⑥ Connection module side

⑭ Connector

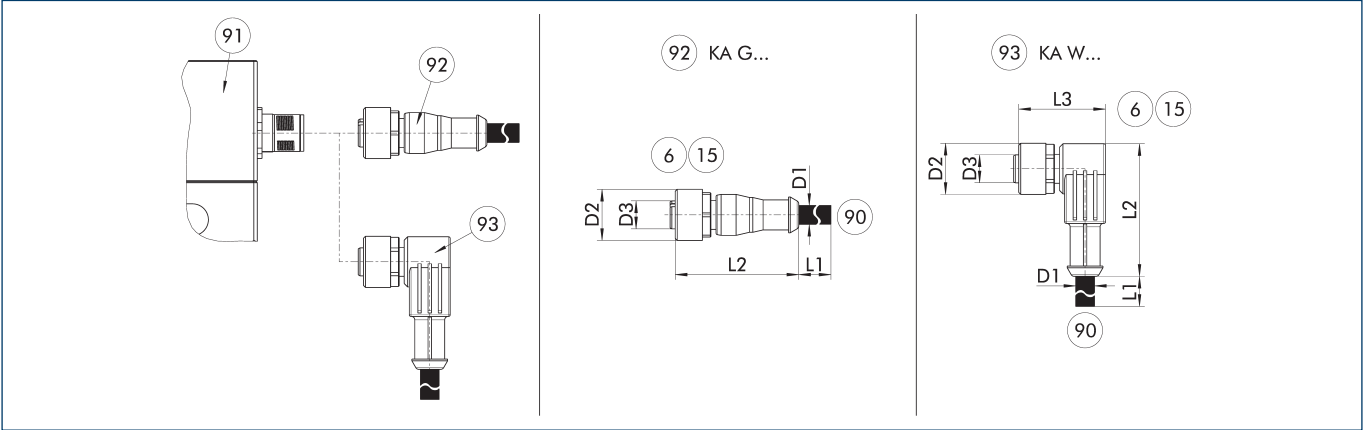
⑨⑩ Cable ends with second plug connector

The communication cables are suitably assembled for the mechatronic products from SCHUNK and can be used for the PROFINET, EtherNet/IP and EtherCAT communication interfaces. They always have an M12 plug connector on the module side (D-coded, connector). The plug connectors are designed straight (KA G...) or angled (KA W...) on the module side. On the second side, the cables either have a straight M12 plug connector (D-coded, connector) or an RJ45 plug connector.

Description	ID	L1	D1	L2	D2	L3	D3
		[m]	[mm]	[mm]	[mm]	[mm]	
EtherCAT connection cable star distributor M12 D-coded socket, straight; on M8 A-coded connector, straight							
KA GGN12D04-08A04-ET-00020-A	1521990	0.2	6.5	47.3	14.8		M12
Communication cable suitable for drag chain M12 connector, straight – to M12 connector, straight							
KA GGN12D04-12D04-ET-00500-A	1505114	5	6.5	47.3	14.8		M12
KA GGN12D04-12D04-ET-01000-A	1505119	10	6.5	47.3	14.8		M12
Communication cable suitable for drag chain M12 connector, straight – to RJ45 connector, straight							
KA GGN12D04-RJ45-ET-00200-A	1511256	2	6.5	47.3	14.8		M12
KA GGN12D04-RJ45-ET-00500-A	1354681	5	6.5	47.8	14.8		M12
KA GGN12D04-RJ45-ET-01000-A	1505143	10	6.5	47.3	14.8		M12
Communication cable suitable for drag chain M12 connector, angled – to M12 connector, straight							
KA WGN12D04-12D04-ET-00500-A	1354661	5	6.5	47.8	14.8		M12
KA WGN12D04-12D04-ET-01000-A	1505141	10	6.5	36.3	14.8	30	M12
Communication cable suitable for drag chain M12 connector, angled – to RJ45 connector, straight							
KA WGN12D04-RJ45-ET-00500-A	1354688	5	6.5	36.3	14.8	30	M12
KA WGN12D04-RJ45-ET-01000-A	1505142	10	6.5	36.3	14.8	30	M12
Communication cable suitable for torsion-resistant M12 connector, straight – to M12 connector, straight							
KAR GGN12D04-12D04-ET-00500-A	1505146	5	6.5	47.8	14.8		M12
KAR GGN12D04-12D04-ET-01000-A	1505147	10	6.5	47.3	14.8		M12
Communication cable suitable for drag chain-suitable M12 connector, straight – to RJ45 connector, straight							
KAR GGN12D04-RJ45-ET-00500-A	1354677	5	6.5	47.8	14.8		M12
KAR GGN12D04-RJ45-ET-01000-A	1505160	10	6.5	47.3	14.8		M12
Communication cable suitable for torsion-resistant M12 connector, angled – to M12 connector, straight							
KAR WGN12D04-12D04-ET-00500-A	1354674	5	6.5	47.8	14.8		M12
KAR WGN12D04-12D04-ET-01000-A	1505148	10	6.5	36.3	14.8	30	M12
Communication cable suitable for torsion-resistant M12 connector, angled – to RJ45 connector, straight							
KAR WGN12D04-RJ45-ET-00500-A	1354692	5	6.5	36.3	14.8	30	M12
KAR WGN12D04-RJ45-ET-01000-A	1505149	10	6.5	36.3	14.8	30	M12

① Please observe the min. bending radius for cable track-compatible cables or the max. torsion angle for torsion-compatible cables. These are generally 10 times the cable diameter or +/- 180°/m.

Connection cable for voltage supply and communication IO-Link



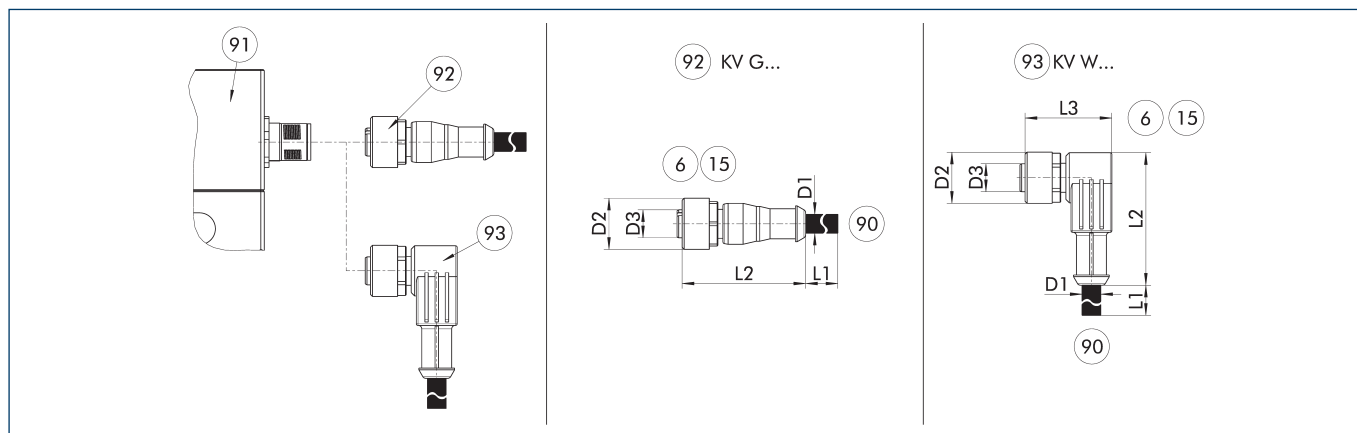
- KA G... Connection cable with straight socket  
 KA W... Connection cable with angular socket
- 6 Connection module side  
 15 Socket  
 90 SAC connection cable with open wire strands
- 91 Connection plug component  
 92 Cable with straight female connector  
 93 Cable with angled female connector

The connection cable is ideal for connecting the corresponding components to the control system. The connection cable has a 5-pin M12 socket on one side, and open wire strands on the other side for individual connections. The connection cables are suitable for use both in the cable track as well as in torsion applications.

Description	ID	L1 [m]	D1 [mm]	L2 [mm]	D2 [mm]	L3 [mm]	D3
IO-Link connection cable – drag chain and torsion-compatible							
KA GLN1205-IOL-00500-A	1387207	5	4.8	38	15		M12
KA GLN1205-IOL-01000-A	1387209	10	4.8	38	15		M12
KA WLN1205-IOL-00500-A	1387210	5	4.8	39	15	28	M12
KA WLN1205-IOL-01000-A	1387211	10	4.8	39	15	28	M12

ⓘ Please observe the min. bending radius for cable track-compatible cables or the max. torsion angle for torsion-compatible cables. These are generally 10 times the cable diameter or +/- 180°/m.

## Cable extension for voltage supply and communication IO-Link



KV G... Cable extension with straight socket  
KV W... Cable extension with angled socket

⑥ Connection module side  
⑮ Socket  
⑨⑩ Cable end with straight connector

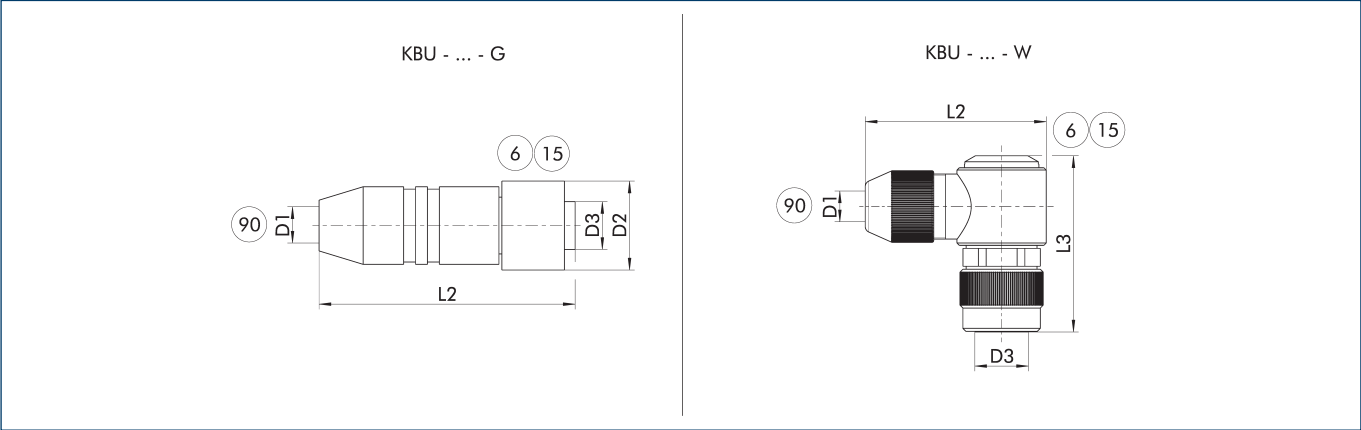
⑨① Connection plug component  
⑨② Cable with straight female connector  
⑨③ Cable with angled female connector

The cable extensions are ideal for connecting the relevant components to the control system, or for use as extension cables. The cable extensions have a 5-pin M12 connector with a straight or angled design on the module side and a 5-pin M12 plug with a straight design on the other side. The cable extensions are suitable for use in the cable track and in torsion applications.

Description	ID	L1 [m]	D1 [mm]	L2 [mm]	D2 [mm]	L3 [mm]	D3
IO-Link cable extension – cable track and torsion-compatible							
KV GGN1205-IOL-00200-A	1387195	2	4.8	41	15		M12
KV GGN1205-IOL-00500-A	1387199	5	4.8	41	15		M12
KV WGN1205-IOL-00200-A	1387202	2	4.8	39	15	28	M12
KV WGN1205-IOL-00500-A	1387205	5	4.8	39	15	28	M12

① Please observe the min. bending radius for cable track-compatible cables or the max. torsion angle for torsion-compatible cables. These are generally 10 times the cable diameter or +/- 180°/m.

Power supply plug-in connector



- KBU - ... - G

Socket with straight outlet
- KBU - ... - W

Socket with angular outlet
- 6

Connection module side
- 15

Socket
- 90

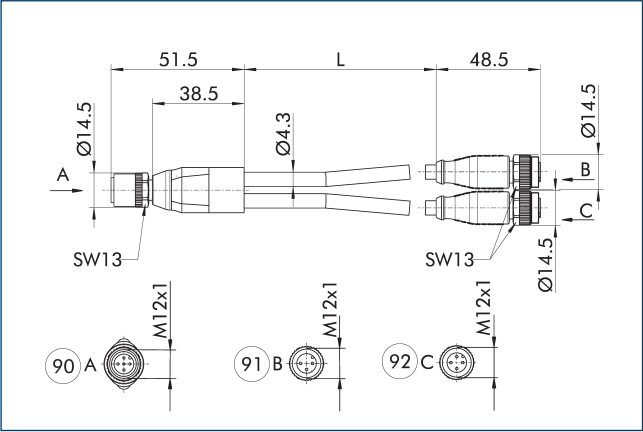
D1 – max. diameter connection cable

The plug connectors are used to connect the SCHUNK product to the voltage supply. A customer cable can be used for this. The individual wire strands are clamped using screw connections in the plug connector.

Description	ID	D1 (max.) [mm]	L2 [mm]	D2 [mm]	L3 [mm]	D3
Plug connector						
KBU-M12L-G	1502044	13	70	25		M12 L-coded
KBU-M12L-W 4P	1543957	13	49	25	99	M12 L-coded

① For the connection cable, a cross-section for each individual wire strand of 1.5 mm<sup>2</sup> is recommended. Please refer to the product documentation for information about max. cable length and min. wire cross section.

Y-distributor for IO-Link for splitting logic and power supply



- 90

Grippers
- 91

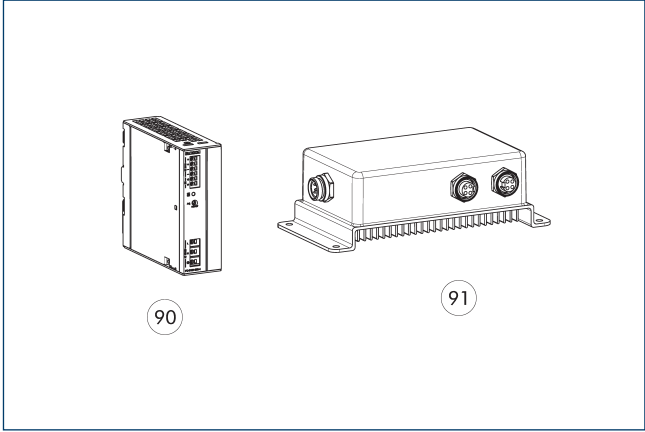
Logic (IO-Link master)
- 92

Power (24 V power supply unit)

The Y-distributor enables power to be supplied from a separate voltage source and is recommended when the current consumption of the product exceeds the current output of the IO-Link master. The logic supply and the IO-Link communication continue to run via the IO-Link master. IO-Link masters with port class A or port class B can be used.

Description	ID	Length [m]
Y-distributor, M12 socket, straight – on 2xM12 plugs, straight A-coded		
Y-Verteiler M12 5pol. auf 1x M12 3pol.	1523560	0.3

Switched-mode power supply



- 90

24 V power supply unit IP2
- 91

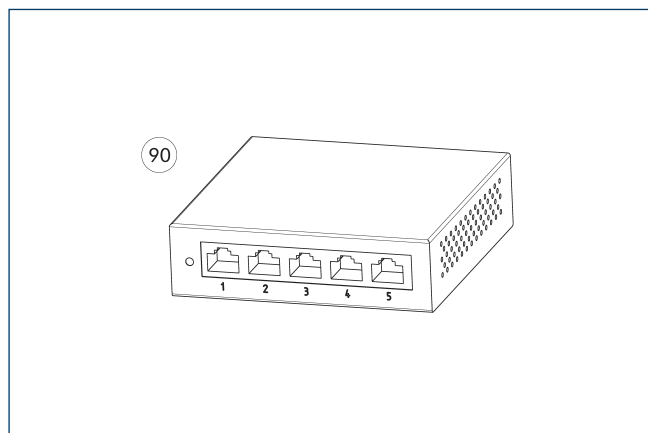
24 V power supply unit IP67

The power supply with an output voltage of 24 V and an input voltage range of 100 V – 240 V are matched to the power supply of our SCHUNK products. Whether for mounting in the control cabinet on DIN rail in protection class IP20 or directly in the field in protection class IP67: the power supply units deliver voltage where it is needed. We will be happy to assist you with further selection.

Description	ID	
24 V power supply unit IP2		
BLOCK PC-0124-050-0	31001408	
24 V power supply unit IP67		
TURCK PSU67-12-2480/M	1524336	

① For the power supply IP67, there are customizable plug connectors for connection to the power supply unit included in the scope of delivery.

## Switch

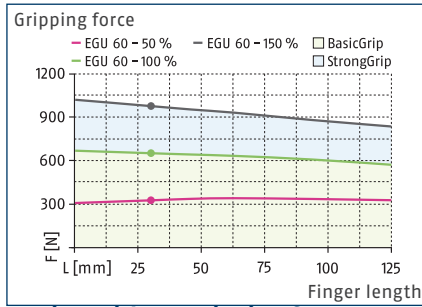


⑨ Ethernet 5-port switch

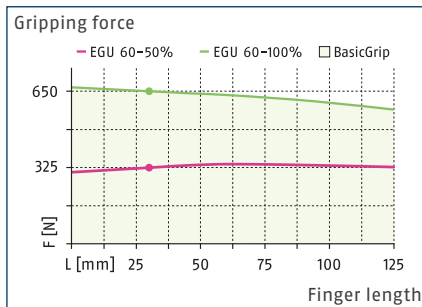
The switches enable easy expansion of a high-speed network using wired connections. With the switch, several SCHUNK products can be included in a network and thus controlled via a PLC, for example.

Description	ID	
Ethernet switch		
D-Link DGS-105 5-Port Ethernet Switch	1526496	

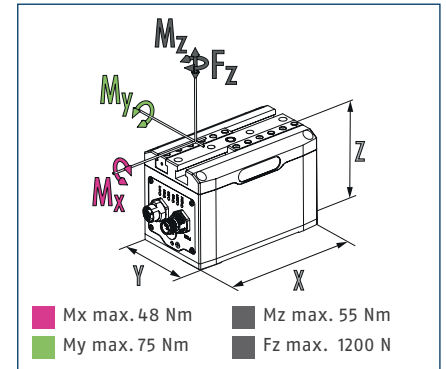
### Version with gripping force maintenance device



### Version without gripping force maintenance



### Dimensions and maximum loads



① The indicated moments and forces are static values, apply for each base jaw and may appear simultaneously. Loads may additionally occur to the moment produced by the gripping force itself.

### Technical data EGU with gripping force maintenance

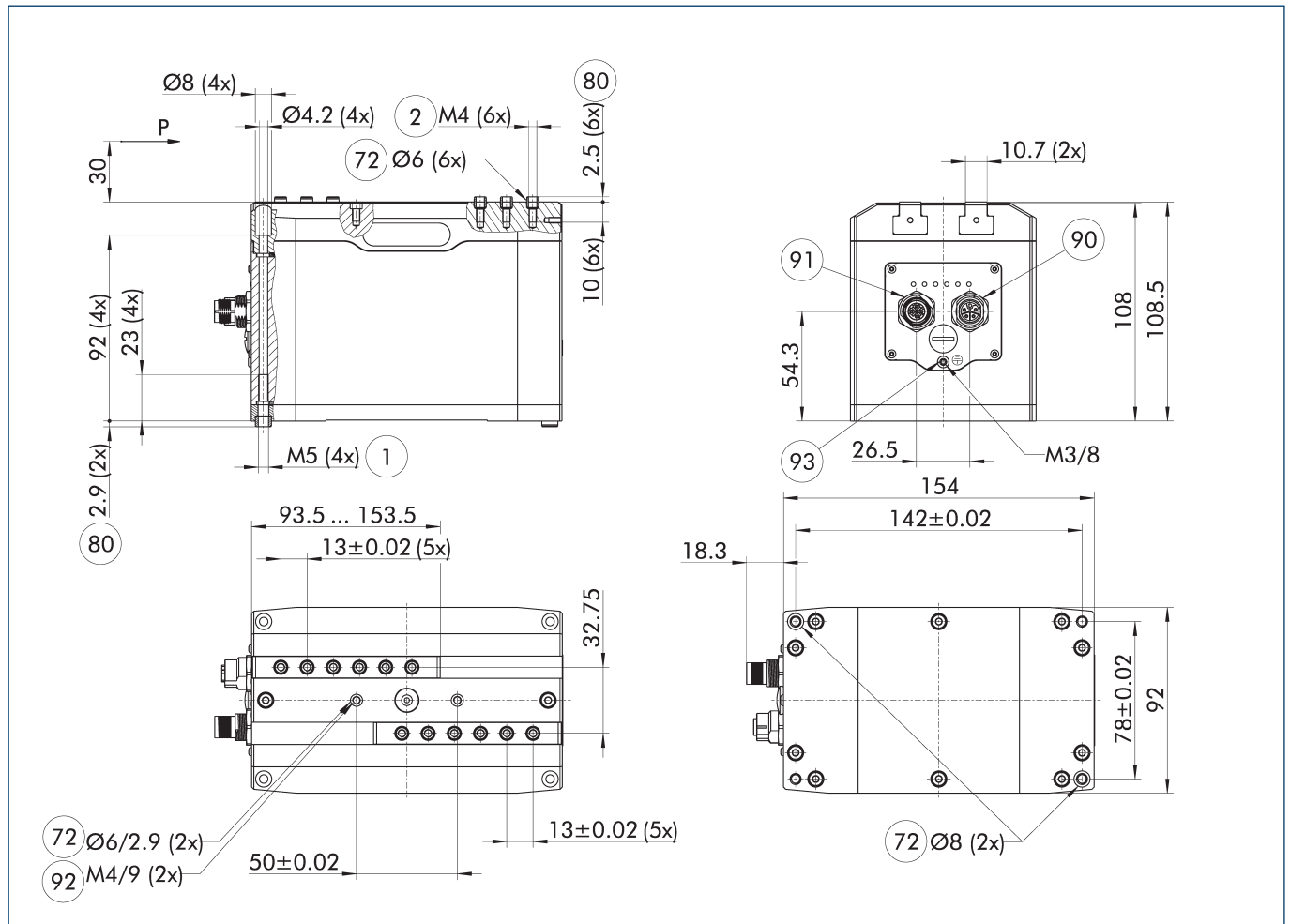
Description		EGU 60-PN-M-B	EGU 60-EI-M-B	EGU 60-EC-M-B	EGU 60-IL-M-B	EGU 60-MB-M-B
ID		1491558	1491560	1491564	1491550	1491555
<b>General operating data</b>						
Stroke per jaw	[mm]	60	60	60	60	60
Min./max. gripping force	[N]	325/975	325/975	325/975	325/975	325/975
Min./max. gripping force maintenance	[%]	80/100	80/100	80/100	80/100	80/100
Max. permissible finger length	[mm]	125	125	125	125	125
Max. permissible weight per finger	[kg]	0.8	0.8	0.8	0.8	0.8
Repeat accuracy (gripping)	[mm]	0.03	0.03	0.03	0.03	0.03
Repeat accuracy (positioning, unidirectional)	[mm]	0.05	0.05	0.05	0.05	0.05
Repeat accuracy (positioning, bi-directional)	[mm]	0.3	0.3	0.3	0.3	0.3
Closing/opening time (positioning, 30 mm stroke)	[s]	1/1	1/1	1/1	1/1	1/1
Max. speed (positioning)	[mm/s]	110	110	110	110	110
Max. acceleration	[mm/s²]	650	650	650	650	650
Weight	[kg]	2.9	2.9	2.9	2.9	2.9
Min./max. ambient temperature	[°C]	5/55	5/55	5/55	5/55	5/55
IP protection class, electronics		67	67	67	67	67
IP protection class guide/base jaws		40	40	40	40	40
Cleanroom class ISO 14644-1:2015		5	5	5	5	5
<b>Electrical operating data</b>						
Nominal voltage	[V]	24	24	24	24	24
Communication interface		PROFINET	EtherNet/IP	EtherCAT	IO-Link	Modbus RTU
BasicGrip nominal/max. current consumption	[A]	0.84/1.44	0.84/1.44	0.84/1.44	0.84/1.44	0.84/1.44
StrongGrip nominal/max. current consumption	[A]	1.56/2.04	1.56/2.04	1.56/2.04	1.56/2.04	1.56/2.04
Logic nominal/max. current consumption	[A]	0.16/0.2	0.16/0.2	0.16/0.2	0.16/0.2	0.16/0.2
<b>Options and their characteristics</b>						
Dustproof version		1504589	1504591	1504593	1504585	1504587
IP protection class guide/base jaws		64	64	64	64	64
Stroke per jaw	[mm]	50	50	50	50	50
Min./max. gripping force	[N]	325/975	325/975	325/975	325/975	325/975
Weight	[kg]	2.96	2.96	2.96	2.96	2.96
Cleanroom class ISO 14644-1:2015		5	5	5	5	5



**Technical data EGU without gripping force maintenance**

Description		EGU 60-PN-N-B	EGU 60-EI-N-B	EGU 60-EC-N-B	EGU 60-IL-N-B	EGU 60-MB-N-B
ID		1491559	1491561	1491565	1491551	1491556
<b>General operating data</b>						
Stroke per jaw	[mm]	60	60	60	60	60
Min./max. gripping force	[N]	325/650	325/650	325/650	325/650	325/650
Max. permissible finger length	[mm]	125	125	125	125	125
Max. permissible weight per finger	[kg]	0.8	0.8	0.8	0.8	0.8
Repeat accuracy (gripping)	[mm]	0.03	0.03	0.03	0.03	0.03
Repeat accuracy (positioning, unidirectional)	[mm]	0.05	0.05	0.05	0.05	0.05
Repeat accuracy (positioning, bi-directional)	[mm]	0.3	0.3	0.3	0.3	0.3
Closing/opening time (positioning, 30 mm stroke)	[s]	1/1	1/1	1/1	1/1	1/1
Max. speed (positioning)	[mm/s]	110	110	110	110	110
Max. acceleration	[mm/s <sup>2</sup> ]	650	650	650	650	650
Weight	[kg]	2.77	2.77	2.77	2.77	2.77
Min./max. ambient temperature	[°C]	5/55	5/55	5/55	5/55	5/55
IP protection class, electronics		67	67	67	67	67
IP protection class guide/base jaws		40	40	40	40	40
Cleanroom class ISO 14644-1:2015		5	5	5	5	5
<b>Electrical operating data</b>						
Nominal voltage	[V]	24	24	24	24	24
Communication interface		PROFINET	EtherNet/IP	EtherCAT	IO-Link	Modbus RTU
BasicGrip nominal/max. current consumption	[A]	0.78/1.2	0.78/1.2	0.78/1.2	0.78/1.2	0.78/1.2
Logic nominal/max. current consumption	[A]	0.16/0.2	0.16/0.2	0.16/0.2	0.16/0.2	0.16/0.2
<b>Options and their characteristics</b>						
Dustproof version		1504590	1504592	1504594	1504586	1504588
IP protection class guide/base jaws		64	64	64	64	64
Stroke per jaw	[mm]	50	50	50	50	50
Min./max. gripping force	[N]	325/650	325/650	325/650	325/650	325/650
Weight	[kg]	2.83	2.83	2.83	2.83	2.83
Cleanroom class ISO 14644-1:2015		5	5	5	5	5

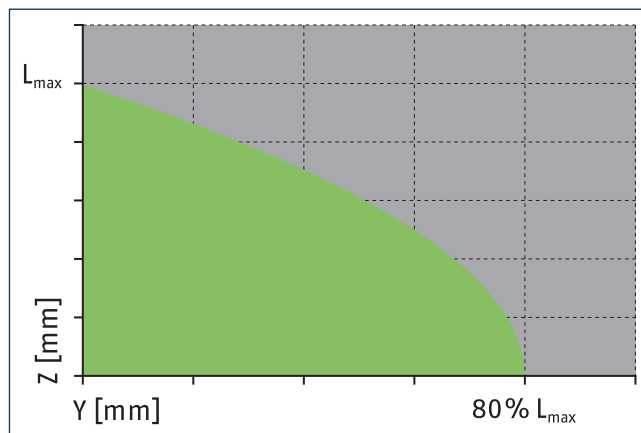
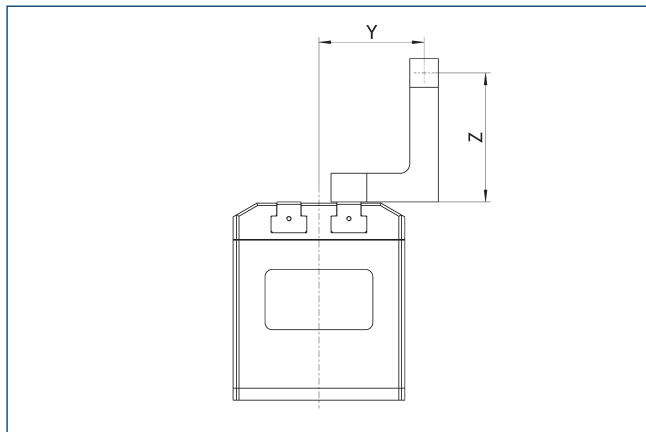
### Main view



The drawing shows the gripper in PROFINET, EtherNet/IP or EtherCAT version, with and without gripper force maintenance with opened jaws.

- |   |   |
|---|---|
| ① Gripper connection                                      | ⑨① Communication (M12, socket, 4 pin, D-coded)  |
| ② Finger connection                                       | ⑨② Screw connection with fittings for additional attachment (these centering sleeves are not included in the scope of delivery) |
| ⑦② Fit for centering sleeves                              | ⑨③ Functional ground connection   |
| ⑧① Depth of the centering sleeve hole in the counter part |   |
| ⑨① Voltage supply (M12, connector, 4 pin, L-coded)        |   |

## Maximum permitted finger projection

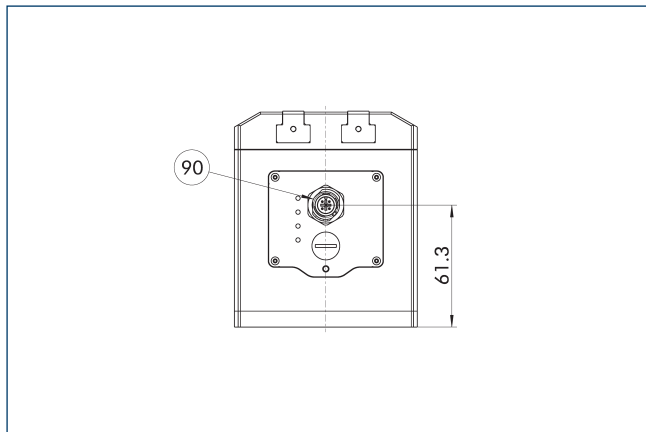


■ Permitted range

■ Inadmissible range

L<sub>max</sub> is equivalent to the maximum permitted finger length, see the technical data table.

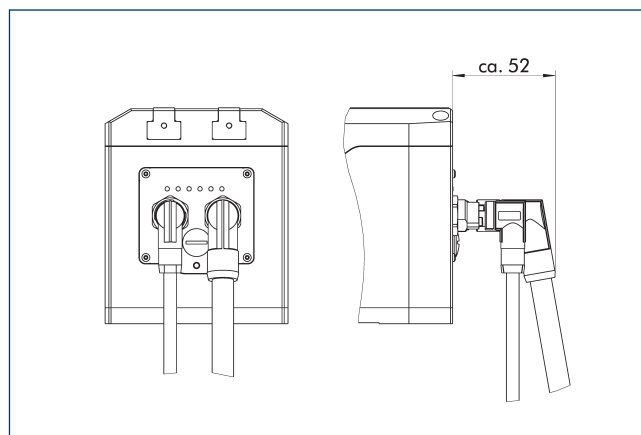
## IO-Link and Modbus RTU version



90 Voltage supply and communication (M12, connector, A-coded, IL: 5 pin, MB: 4 pin)

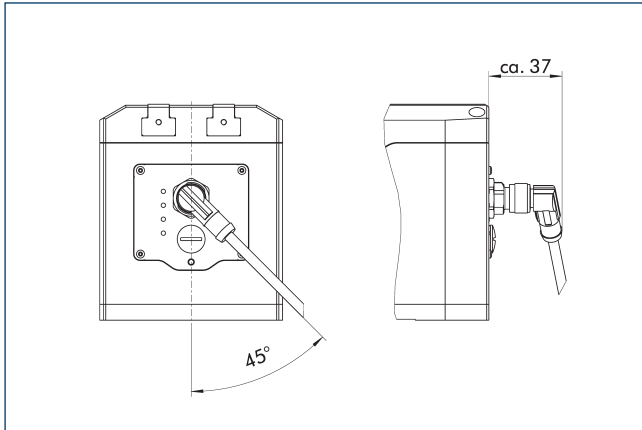
The drawing shows the changes in dimension of the IO-Link and Modbus RTU versions compared to the basic version found in the main view.

## Angled plug connectors for PROFINET, EtherNet/IP and EtherCAT version



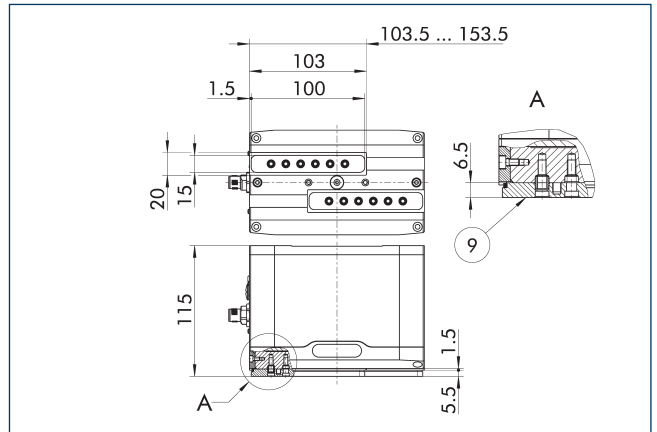
The drawing shows the direction of the cable outlet when using angled connectors. The distance from the plug connector to the gripper housing may vary depending on the cable manufacturer used.

### Angled plug connectors for IO-Link and Modbus RTU version



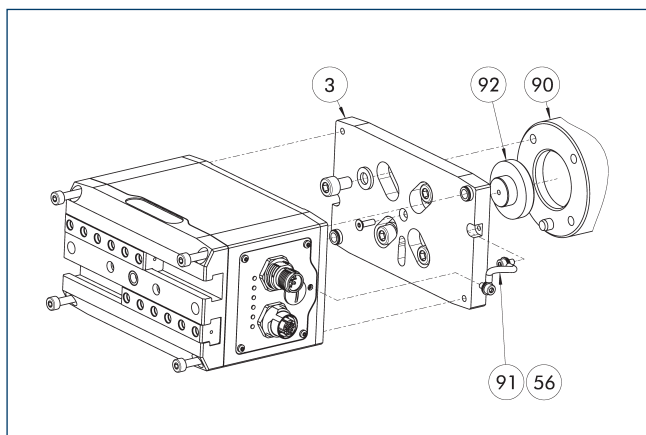
The drawing shows the direction of the cable outlet when using angled connectors. The distance from the plug connector to the gripper housing may vary depending on the cable manufacturer used.

### Dustproof version



The "dustproof" option increases the degree of protection against penetrating substances. The assembly diagram shifts by the height of the intermediate jaw. The finger length is still measured from the upper edge of the gripper housing.

## Robot adaptation packages single gripper

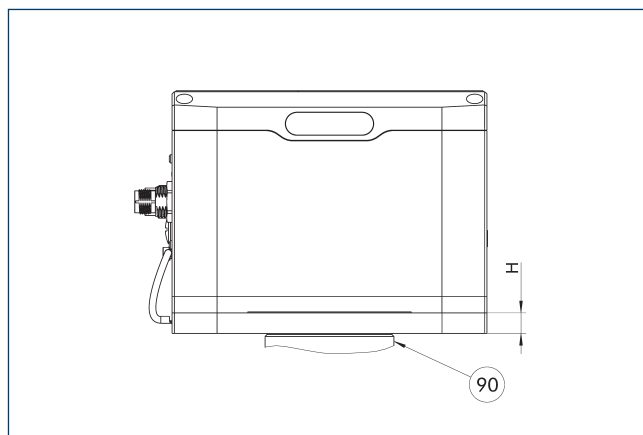


- ③ Adapter
- ⑤⑥ Included in the scope of delivery
- ⑨⑩ Robot flange
- ⑨① Cable functional ground
- ⑨② Centering disc

Robot adaptation packages for single grippers contain all components required to mechanically adapt the gripper to the desired robot flange. Depending on the flange pattern, suitable screws, centering pins and the centering collar are included.

Description	ID	Height	DIN ISO-9409 bolt circle	Manufacturer	Model
		[mm]	[mm]		
Adapter					
AKO EGU60/GP12	1524679	11		YASKAWA	GP12
AKO EGU60/GP7.8	1524677	10.5		YASKAWA	GP7, GP8
AKO EGU60/ISO31.5	1524671	10.5	31.5	ABB	IRB1200
AKO EGU60/ISO40	1524673	10.5	40	ABB	IRB1300
AKO EGU60/ISO50	1524675	10.5	50	Universal Robots	UR10e, UR16e
AKO EGU60/ISO50	1524675	10.5	50	FANUC	CRX-10iA, CRX-20iA, CRX-25iA
AKO EGU60/ISO50	1524675	10.5	50	YASKAWA	HC10DTP, HC20DTP

## Robot adaptation packages single gripper

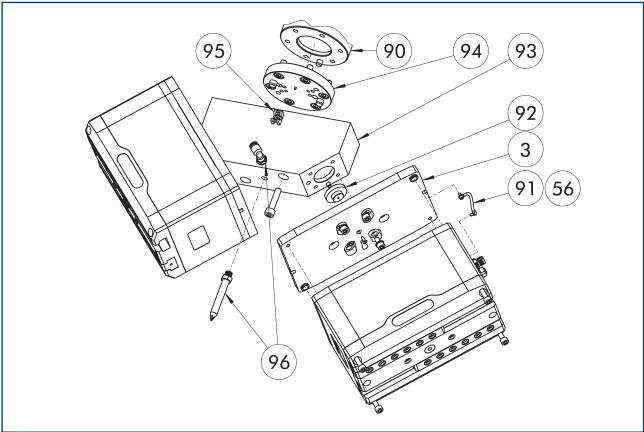


- ⑨⑩ Robot flange

The single-piece design enables a flat construction of the entire system. The adapter is manufactured from blank aluminum. The listed robot manufacturers with their associated models constitute useful recommendations taking the total mass into account. SCHUNK nevertheless recommends that the payload of the robot will be considered in detail.

Description	ID	Height	DIN ISO-9409 bolt circle	Manufacturer	Model
		[mm]	[mm]		
Adapter					
AKO EGU60/GP12	1524679	11		YASKAWA	GP12
AKO EGU60/GP7.8	1524677	10.5		YASKAWA	GP7, GP8
AKO EGU60/ISO31.5	1524671	10.5	31.5	ABB	IRB1200
AKO EGU60/ISO40	1524673	10.5	40	ABB	IRB1300
AKO EGU60/ISO50	1524675	10.5	50	Universal Robots	UR10e, UR16e
AKO EGU60/ISO50	1524675	10.5	50	FANUC	CRX-10iA, CRX-20iA, CRX-25iA
AKO EGU60/ISO50	1524675	10.5	50	YASKAWA	HC10DTP, HC20DTP

Robot adaptation packages double gripper



- ③ Adapter

⑤⑥ Included in the scope of delivery

⑨⑩ Robot flange

⑨① Cable functional ground

⑨② Centering collar gripper
- ⑨③ angle adapter

⑨④ Adapter robot

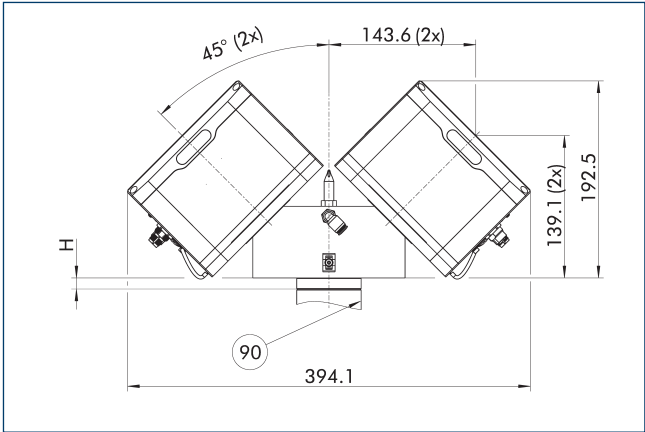
⑨⑤ Cable holder (included in the scope of delivery of the cable package)

⑨⑥ Attachment set blow-off nozzle

Robot adaptation packages for double grippers contain all components required to mechanically adapt two grippers to the desired robot flange. Depending on the flange pattern, suitable screws, centering pins and centering material are included in the delivery. A short or long blow-off nozzle can be added as an option.

Description	ID	Height	DIN ISO-9409 bolt circle	Manufacturer	Model
		[mm]	[mm]		
Adapter					
AKO 2xEGU60/ISO50	1524667	10.8	50	FANUC	CRX-20iA, CRX-25iA
AKO 2xEGU60/ISO50	1524667	10.8	50	YASKAWA	HC20DTP
AKO 2xEGU60/ISO63	1524668	14.8	63		
AKO 2xEGU60/ISO80	1524669	14.8	80		
Attachment set blow-off nozzle (short)	1524788				

Robot adaptation packages double gripper



- ⑨⑩ Robot flange

The adapter is manufactured from blank aluminum. The listed robot manufacturers with their associated models constitute useful recommendations taking the total mass into account. SCHUNK nevertheless recommends that the payload of the robot will be considered in detail.

Description	ID	Height	DIN ISO-9409 bolt circle	Manufacturer	Model
		[mm]	[mm]		
Adapter					
AKO 2xEGU60/ISO50	1524667	10.8	50	FANUC	CRX-20iA, CRX-25iA
AKO 2xEGU60/ISO50	1524667	10.8	50	YASKAWA	HC20DTP
AKO 2xEGU60/ISO63	1524668	14.8	63		
AKO 2xEGU60/ISO80	1524669	14.8	80		



## Robot-specific connection cables

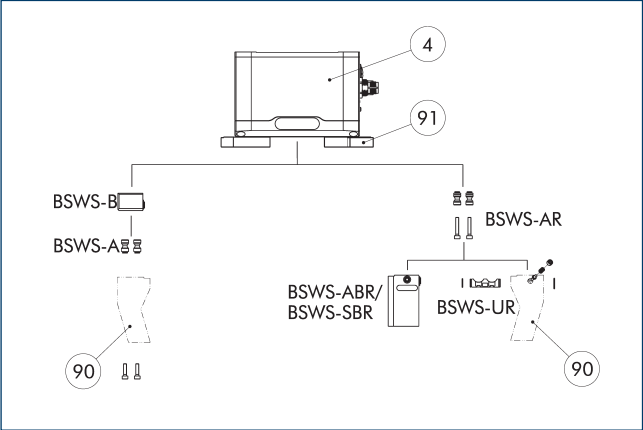


Connection cables and connection cable kits for electrical connection to specific robot models and controllers. Depending on the manufacturer, a direct connection to the tool flange is possible or external cabling is required. In combination with mechanical adapters and software modules, this allows commissioning on the robot to be carried out in just a few steps. Cables for external cable routing are designed to withstand torsion.

Description	ID	Manufacturer	Series	Model	Controller	Connection	Cable length [m]	Interface
Double gripper								
EGU/EGK CNK-DG-FANUC-CRX	1532241	FANUC	CRX	CRX-5iA, CRX-10iA, CRX-20iA, CRX-25iA	R-30iB Plus Mini	Tool, internal feed-through		Modbus RTU
EGU/EGK CNK-DG-UR-eSeries	1532238	Universal Robots	e-Series	UR3e, UR5e, UR10e, UR16e	CB5	Tool, internal feed-through		Modbus RTU
EGU CNK-DG-ABB-OmniCoreC30	1529608	ABB	IRB, CRB		OmniCore C30	Controller, external cable routing	5	EtherNet/IP
EGU CNK-DG-YASKAWA-YRC1000micro	1529621	YASKAWA	GP, HC		YRC1000MICRO	Controller, external cable routing	5	EtherNet/IP
Single gripper								
EGU/EGK CNK-SG-FANUC-CRX	1532240	FANUC	CRX	CRX-5iA, CRX-10iA, CRX-20iA, CRX-25iA	R-30iB Plus Mini	Tool, internal feed-through		Modbus RTU
EGU/EGK CNK-SG-UR-eSeries	1532237	Universal Robots	e-Series	UR3e, UR5e, UR10e, UR16e	CB5	Tool, internal feed-through		Modbus RTU
EGU CNK-SG-ABB-OmniCoreC30	1529600	ABB	IRB, CRB		OmniCore C30	Controller, external cable routing	5	EtherNet/IP
EGU CNK-SG-YASKAWA-YRC1000micro	1529619	YASKAWA	GP, HC		YRC1000MICRO	Tool, internal feed-through	5	EtherNet/IP

① The performance data of the robot must be taken into account. SCHUNK also recommends the use of a suitable strain relief.

BSWS jaw quick-change jaw systems



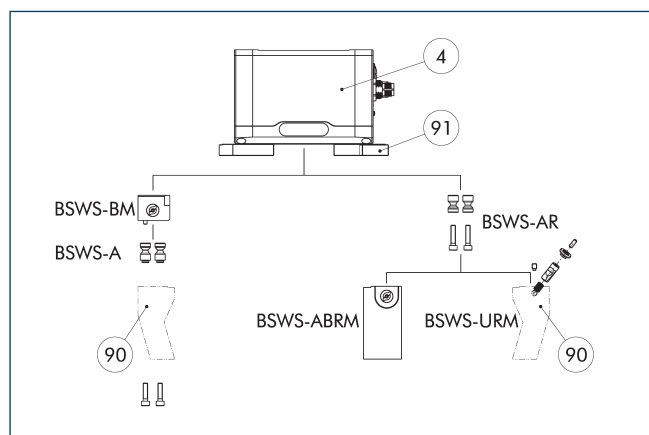
- ④ Grippers
- ⑨① Intermediate jaw
- ⑨② Customized gripper fingers

There are various jaw quick-change systems available for the gripper. For detailed information, please refer to the corresponding product.

Description	ID	Scope of delivery
Jaw quick-change system adapter pin		
BSWS-A 100	0303026	2
BSWS-AR 100	0300094	2
Quick-change jaw system base		
BSWS-B 100	0303027	1
Jaw quick-change system finger blank		
BSWS-ABR-PGZN-plus 100	0300074	1
BSWS-SBR-PGZN-plus 100	0300084	1
Jaw quick-change system locking mechanism		
BSWS-UR 100	0302993	1

① Only systems that are listed in the table, can be used.

## Jaw quick-change system BSW-M



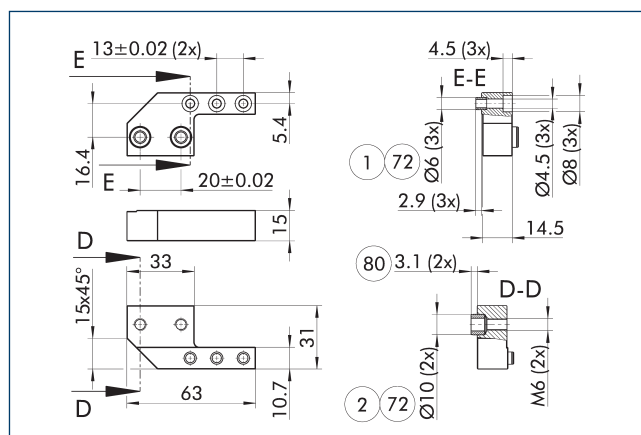
- ④ Grippers
- ⑨① Intermediate jaw
- ⑨② Customized gripper fingers

There are various jaw quick-change systems available for the gripper. For detailed information, please refer to the corresponding product.

Description	ID	Scope of delivery
<b>Jaw quick-change system adapter pin</b>		
BSWS-A 100	0303026	2
BSWS-AR 100	0300094	2
<b>Quick-change jaw system base</b>		
BSWS-BM 100	1313902	1
<b>Jaw quick-change system finger blank</b>		
BSWS-ABRM-PGZN-plus 100	1420853	1
<b>Jaw quick-change system locking mechanism</b>		
BSWS-URM 100	1398403	1

① Only systems that are listed in the table, can be used.

## Intermediate jaw ZBA-EGU 60

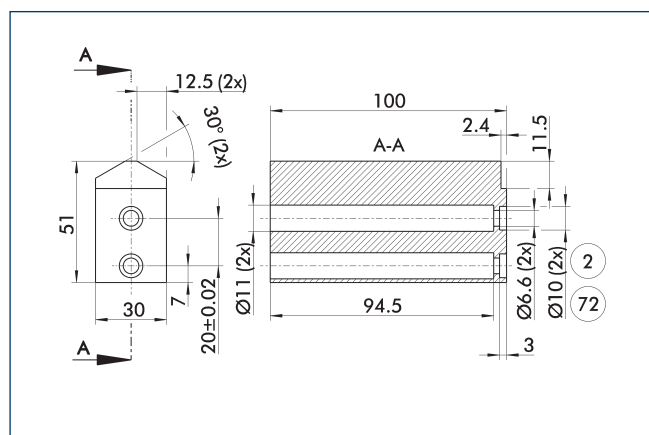


- ① Gripper connection
- ② Finger connection
- ⑦② Fit for centering sleeves
- ⑧② Depth of the centering sleeve hole in the counter part

The intermediate jaws offset the side offset of the base jaws in the Y direction and enable an aligned connection. During use, the interface of the base jaws corresponds to that of the universal gripper PGN-plus-P. This means that the extensive range of finger accessories for the PGN-plus-P can also be used for this gripper, taking into account the interfering contours, and the application limits that apply.

Description	ID	Material	Scope of delivery
<b>Intermediate jaw</b>			
ZBA EGU 60	1504613	Steel, corrosion-protected	2

## Finger blanks ABR/SBR-PGZN-plus 100



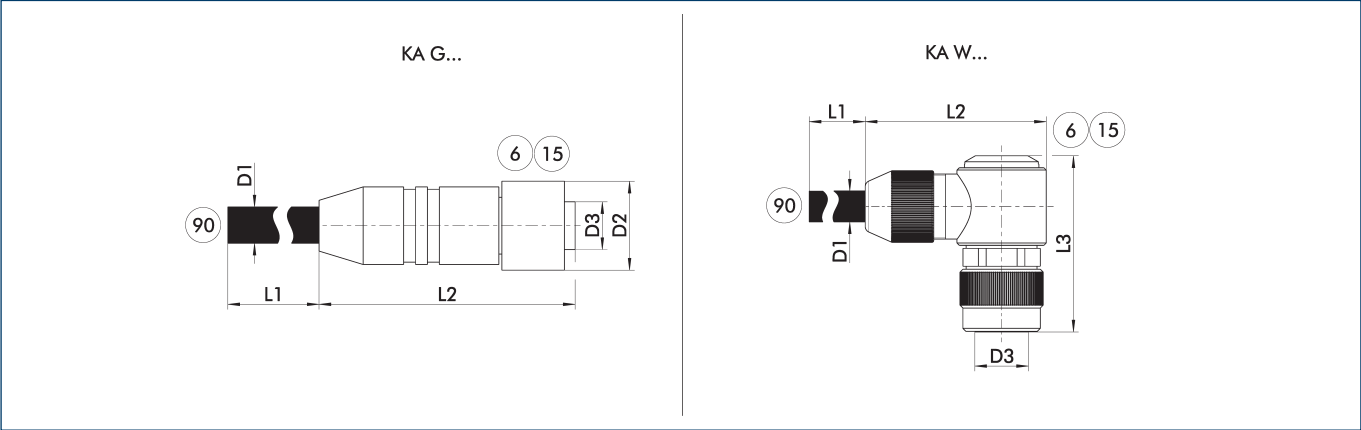
- ② Finger connection
- ⑦② Fit for centering sleeves

The drawing shows the finger blank which can be reworked by the customer.

Description	ID	Material	Scope of delivery
<b>Finger blank</b>			
ABR-PGZN-plus 100	0300012	Aluminum (3.4365)	1
SBR-PGZN-plus 100	0300022	Steel (1.7131)	1

① In the PGL-plus-P gripper series, the use of finger blanks results in a limitation of the closing stroke. Please check this in detail in advance using the CAD data and adjust the reworking of the fingers accordingly.

Voltage supply connection cable



- KA G... Connection cable with straight plug connector
- KA W... Connection cable with angled plug connector
- 6

 Connection module side
- 15

 Socket
- 90

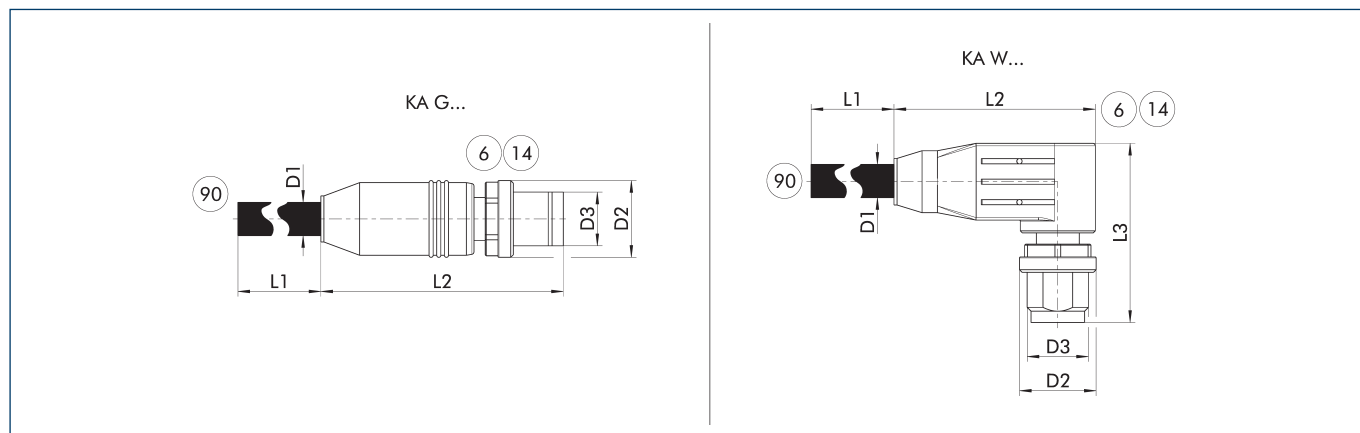
 Cable end with open wire strands

The connection cables are used to connect the SCHUNK product to the voltage supply.

Description	ID	L1	D1	L2	D2	L3	D3
		[m]	[mm]	[mm]	[mm]	[mm]	
Voltage supply connection cable – drag chain and torsion resistant M12 socket, straight							
KA GLN12L04-LK-00500-A	1502019	5	7.2	53.5	18		M12 L-coded
KA GLN12L04-LK-01000-A	1502023	10	7.2	53.5	18		M12 L-coded
Voltage supply connection cable – drag chain and torsion resistant M12 socket, angled							
KA WLN12L04-LK-00500-A	1502028	5	7.2	49	18	40	M12 L-coded
KA WLN12L04-LK-01000-A	1502032	10	7.2	49	18	40	M12 L-coded

ⓘ Please observe the min. bending radius for cable track-compatible cables or the max. torsion angle for torsion-compatible cables. These are generally 10 times the cable diameter or +/- 180°/m. Please refer to the product documentation for information about max. cable length and min. wire cross section.

## Connection cable communication PROFINET, EtherNet/IP and EtherCAT



KA G... Straight plug connector

KA W... Angular plug connector

⑥ Connection module side

⑭ Connector

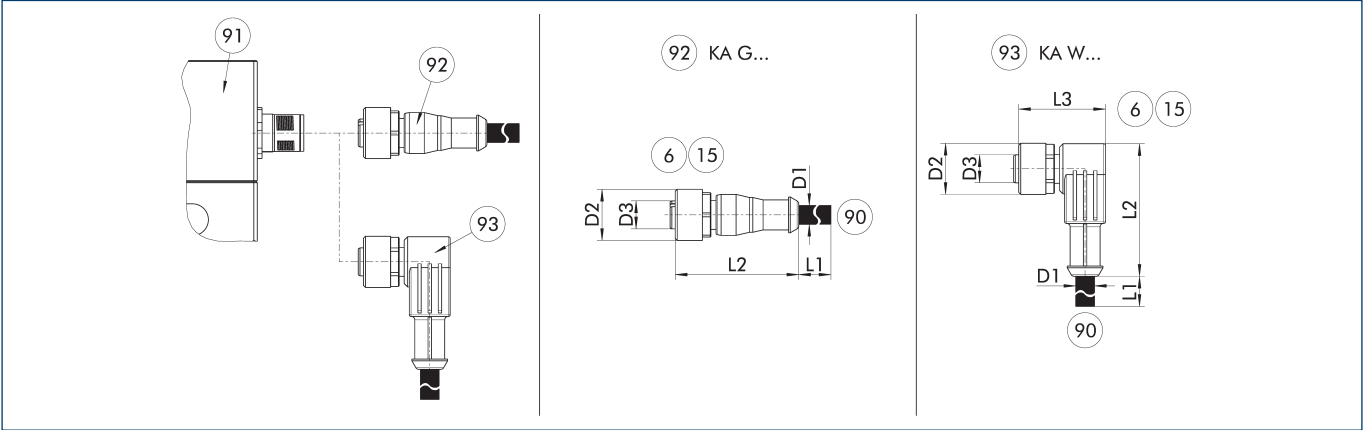
⑨⑩ Cable ends with second plug connector

The communication cables are suitably assembled for the mechatronic products from SCHUNK and can be used for the PROFINET, EtherNet/IP and EtherCAT communication interfaces. They always have an M12 plug connector on the module side (D-coded, connector). The plug connectors are designed straight (KA G...) or angled (KA W...) on the module side. On the second side, the cables either have a straight M12 plug connector (D-coded, connector) or an RJ45 plug connector.

Description	ID	L1	D1	L2	D2	L3	D3
		[m]	[mm]	[mm]	[mm]	[mm]	
EtherCAT connection cable star distributor M12 D-coded socket, straight; on M8 A-coded connector, straight							
KA GGN12D04-08A04-ET-00020-A	1521990	0.2	6.5	47.3	14.8		M12
Communication cable suitable for drag chain M12 connector, straight – to M12 connector, straight							
KA GGN12D04-12D04-ET-00500-A	1505114	5	6.5	47.3	14.8		M12
KA GGN12D04-12D04-ET-01000-A	1505119	10	6.5	47.3	14.8		M12
Communication cable suitable for drag chain M12 connector, straight – to RJ45 connector, straight							
KA GGN12D04-RJ45-ET-00200-A	1511256	2	6.5	47.3	14.8		M12
KA GGN12D04-RJ45-ET-00500-A	1354681	5	6.5	47.8	14.8		M12
KA GGN12D04-RJ45-ET-01000-A	1505143	10	6.5	47.3	14.8		M12
Communication cable suitable for drag chain M12 connector, angled – to M12 connector, straight							
KA WGN12D04-12D04-ET-00500-A	1354661	5	6.5	47.8	14.8		M12
KA WGN12D04-12D04-ET-01000-A	1505141	10	6.5	36.3	14.8	30	M12
Communication cable suitable for drag chain M12 connector, angled – to RJ45 connector, straight							
KA WGN12D04-RJ45-ET-00500-A	1354688	5	6.5	36.3	14.8	30	M12
KA WGN12D04-RJ45-ET-01000-A	1505142	10	6.5	36.3	14.8	30	M12
Communication cable suitable for torsion-resistant M12 connector, straight – to M12 connector, straight							
KAR GGN12D04-12D04-ET-00500-A	1505146	5	6.5	47.8	14.8		M12
KAR GGN12D04-12D04-ET-01000-A	1505147	10	6.5	47.3	14.8		M12
Communication cable suitable for drag chain-suitable M12 connector, straight – to RJ45 connector, straight							
KAR GGN12D04-RJ45-ET-00500-A	1354677	5	6.5	47.8	14.8		M12
KAR GGN12D04-RJ45-ET-01000-A	1505160	10	6.5	47.3	14.8		M12
Communication cable suitable for torsion-resistant M12 connector, angled – to M12 connector, straight							
KAR WGN12D04-12D04-ET-00500-A	1354674	5	6.5	47.8	14.8		M12
KAR WGN12D04-12D04-ET-01000-A	1505148	10	6.5	36.3	14.8	30	M12
Communication cable suitable for torsion-resistant M12 connector, angled – to RJ45 connector, straight							
KAR WGN12D04-RJ45-ET-00500-A	1354692	5	6.5	36.3	14.8	30	M12
KAR WGN12D04-RJ45-ET-01000-A	1505149	10	6.5	36.3	14.8	30	M12

① Please observe the min. bending radius for cable track-compatible cables or the max. torsion angle for torsion-compatible cables. These are generally 10 times the cable diameter or +/- 180°/m.

**Connection cable for voltage supply and communication IO-Link**



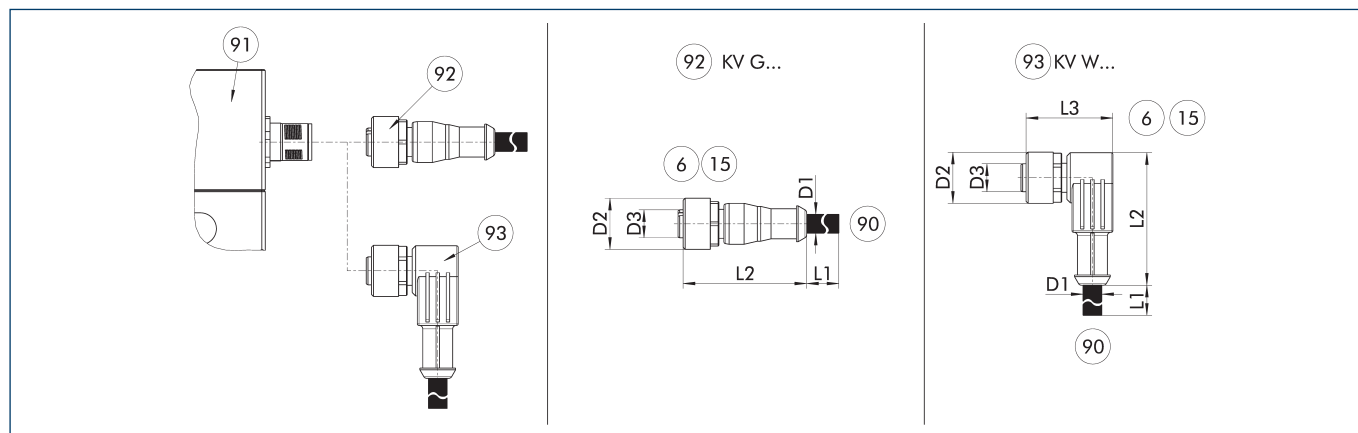
- KA G...  
 KA W...
- Connection cable with straight socket  
 Connection cable with angular socket
- 6  
 15  
 90
- Connection module side  
 Socket  
 SAC connection cable with open wire strands
- 91  
 92  
 93
- Connection plug component  
 Cable with straight female connector  
 Cable with angled female connector

The connection cable is ideal for connecting the corresponding components to the control system. The connection cable has a 5-pin M12 socket on one side, and open wire strands on the other side for individual connections. The connection cables are suitable for use both in the cable track as well as in torsion applications.

Description	ID	L1 [m]	D1 [mm]	L2 [mm]	D2 [mm]	L3 [mm]	D3
IO-Link connection cable – drag chain and torsion-compatible							
KA GLN1205-IOL-00500-A	1387207	5	4.8	38	15		M12
KA GLN1205-IOL-01000-A	1387209	10	4.8	38	15		M12
KA WLN1205-IOL-00500-A	1387210	5	4.8	39	15	28	M12
KA WLN1205-IOL-01000-A	1387211	10	4.8	39	15	28	M12

ⓘ Please observe the min. bending radius for cable track-compatible cables or the max. torsion angle for torsion-compatible cables. These are generally 10 times the cable diameter or +/- 180°/m.

## Cable extension for voltage supply and communication IO-Link



KV G...

Cable extension with straight socket

KV W...

Cable extension with angled socket

⑥ Connection module side

⑮ Socket

⑨⑩ Cable end with straight connector

⑨① Connection plug component

⑨② Cable with straight female connector

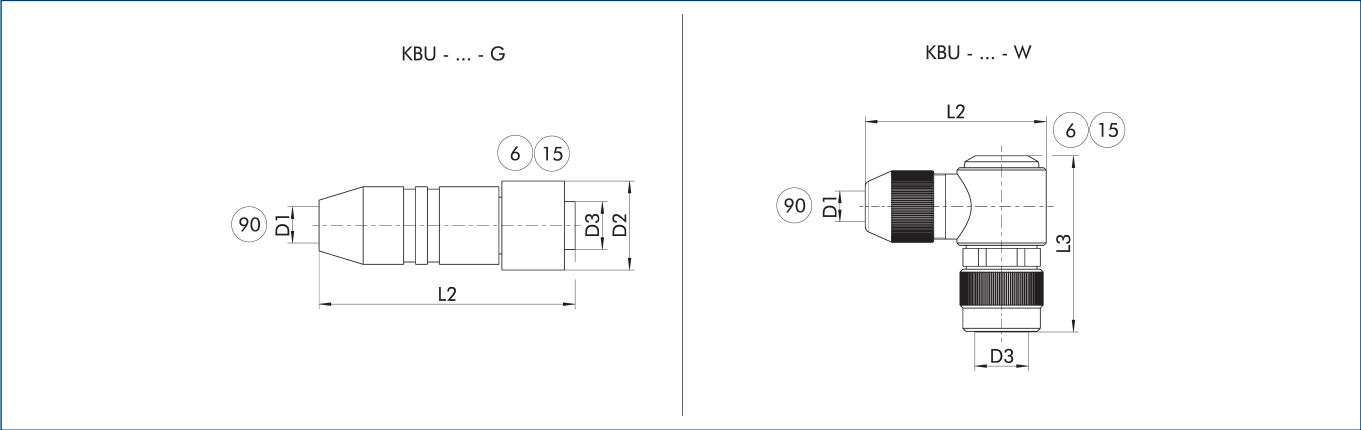
⑨③ Cable with angled female connector

The cable extensions are ideal for connecting the relevant components to the control system, or for use as extension cables. The cable extensions have a 5-pin M12 connector with a straight or angled design on the module side and a 5-pin M12 plug with a straight design on the other side. The cable extensions are suitable for use in the cable track and in torsion applications.

Description	ID	L1 [m]	D1 [mm]	L2 [mm]	D2 [mm]	L3 [mm]	D3
IO-Link cable extension – cable track and torsion-compatible							
KV GGN1205-IOL-00200-A	1387195	2	4.8	41	15		M12
KV GGN1205-IOL-00500-A	1387199	5	4.8	41	15		M12
KV WGN1205-IOL-00200-A	1387202	2	4.8	39	15	28	M12
KV WGN1205-IOL-00500-A	1387205	5	4.8	39	15	28	M12

① Please observe the min. bending radius for cable track-compatible cables or the max. torsion angle for torsion-compatible cables. These are generally 10 times the cable diameter or +/- 180°/m.

Power supply plug-in connector



KBU - ... - G Socket with straight outlet  
KBU - ... - W Socket with angular outlet

⑥ Connection module side  
⑮ Socket

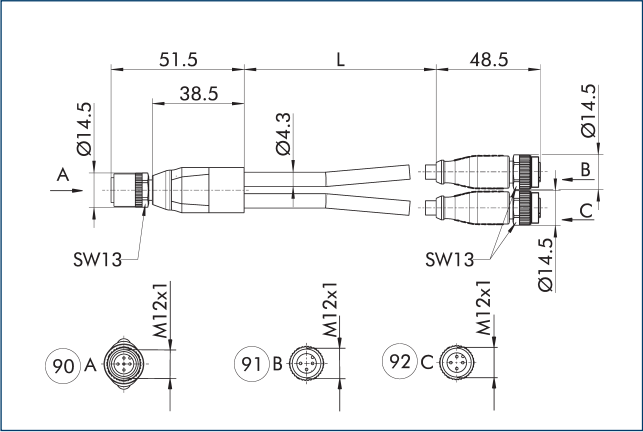
⑨⑩ D1 – max. diameter connection cable

The plug connectors are used to connect the SCHUNK product to the voltage supply. A customer cable can be used for this. The individual wire strands are clamped using screw connections in the plug connector.

Description	ID	D1 (max.) [mm]	L2 [mm]	D2 [mm]	L3 [mm]	D3
Plug connector						
KBU-M12L-G	1502044	13	70	25		M12 L-coded
KBU-M12L-W 4P	1543957	13	49	25	99	M12 L-coded

① For the connection cable, a cross-section for each individual wire strand of 1.5 mm<sup>2</sup> is recommended. Please refer to the product documentation for information about max. cable length and min. wire cross section.

Y-distributor for IO-Link for splitting logic and power supply



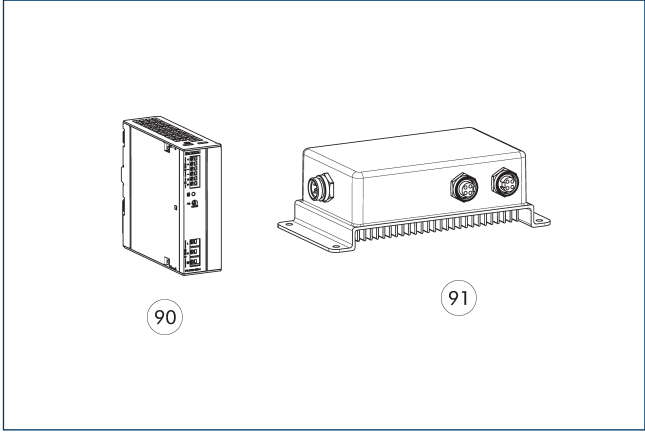
⑨⑩ Grippers  
⑨① Logic (IO-Link master)

⑨② Power (24 V power supply unit)

The Y-distributor enables power to be supplied from a separate voltage source and is recommended when the current consumption of the product exceeds the current output of the IO-Link master. The logic supply and the IO-Link communication continue to run via the IO-Link master. IO-Link masters with port class A or port class B can be used.

Description	ID	Length [m]
Y-distributor, M12 socket, straight – on 2xM12 plugs, straight A-coded		
Y-Verteiler M12 5pol. auf 1x M12 3pol.	1523560	0.3

Switched-mode power supply



⑨⑩ 24 V power supply unit IP2  
⑨① 24 V power supply unit IP67

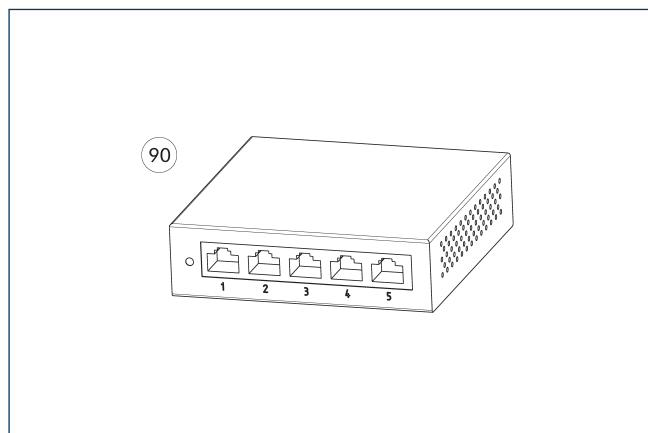
The power supply with an output voltage of 24 V and an input voltage range of 100 V – 240 V are matched to the power supply of our SCHUNK products. Whether for mounting in the control cabinet on DIN rail in protection class IP20 or directly in the field in protection class IP67: the power supply units deliver voltage where it is needed. We will be happy to assist you with further selection.

Description	ID	
24 V power supply unit IP2		
BLOCK PC-0124-050-0	31001408	
24 V power supply unit IP67		
TURCK PSU67-12-2480/M	1524336	

① For the power supply IP67, there are customizable plug connectors for connection to the power supply unit included in the scope of delivery.



## Switch



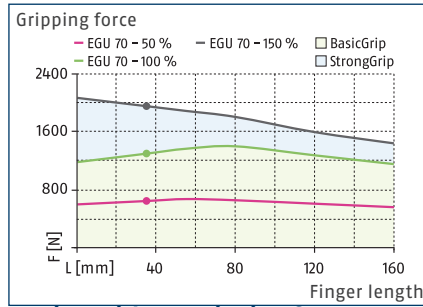
90 Ethernet 5-port switch

The switches enable easy expansion of a high-speed network using wired connections. With the switch, several SCHUNK products can be included in a network and thus controlled via a PLC, for example.

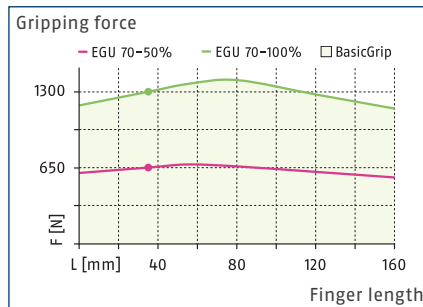
Description	ID	
Ethernet switch		
D-Link DGS-105 5-Port Ethernet Switch	1526496	



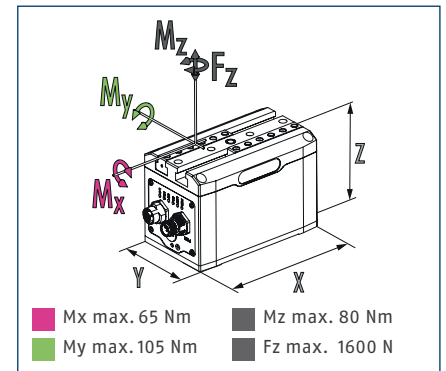
### Version with gripping force maintenance device



### Version without gripping force maintenance



### Dimensions and maximum loads



① The indicated moments and forces are static values, apply for each base jaw and may appear simultaneously. Loads may additionally occur to the moment produced by the gripping force itself.

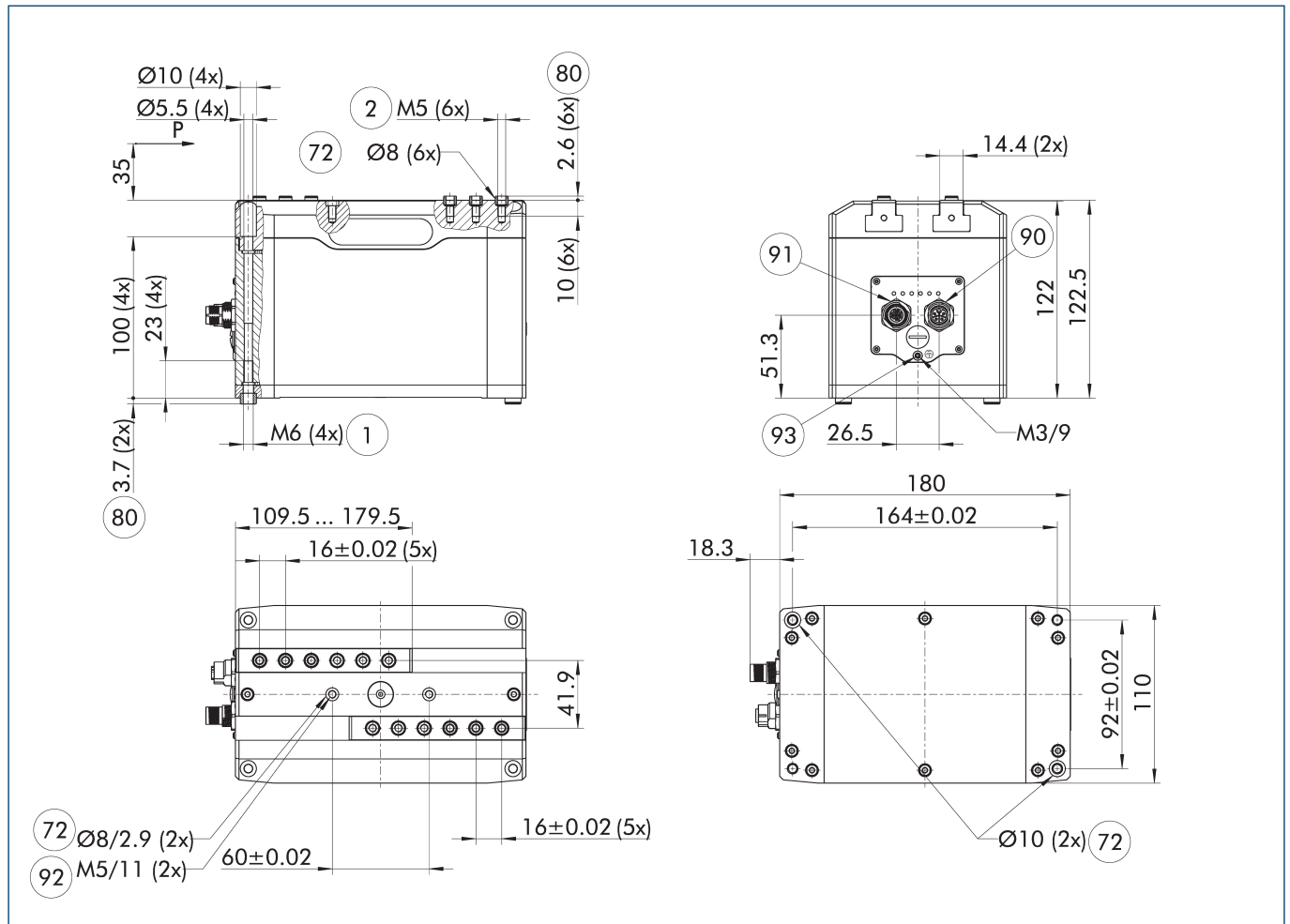
### Technical data EGU with gripping force maintenance

Description		EGU 70-PN-M-B	EGU 70-EI-M-B	EGU 70-EC-M-B	EGU 70-IL-M-B
ID		1491571	1491575	1491577	1491567
<b>General operating data</b>					
Stroke per jaw	[mm]	70	70	70	70
Min./max. gripping force	[N]	650/1950	650/1950	650/1950	650/1950
Min./max. gripping force maintenance	[%]	80/100	80/100	80/100	80/100
Max. permissible finger length	[mm]	160	160	160	160
Max. permissible weight per finger	[kg]	1.4	1.4	1.4	1.4
Repeat accuracy (gripping)	[mm]	0.03	0.03	0.03	0.03
Repeat accuracy (positioning, unidirectional)	[mm]	0.05	0.05	0.05	0.05
Repeat accuracy (positioning, bi-directional)	[mm]	0.3	0.3	0.3	0.3
Closing/opening time (positioning, 30 mm stroke)	[s]	1/1	1/1	1/1	1/1
Max. speed (positioning)	[mm/s]	70	70	70	70
Max. acceleration	[mm/s²]	600	600	600	600
Weight	[kg]	4.52	4.52	4.52	4.52
Min./max. ambient temperature	[°C]	5/55	5/55	5/55	5/55
IP protection class, electronics		67	67	67	67
IP protection class guide/base jaws		40	40	40	40
Cleanroom class ISO 14644-1:2015		5	5	5	5
<b>Electrical operating data</b>					
Nominal voltage	[V]	24	24	24	24
Communication interface		PROFINET	EtherNet/IP	EtherCAT	IO-Link
BasicGrip nominal/max. current consumption	[A]	0.84/2.16	0.84/2.16	0.84/2.16	0.84/2.16
StrongGrip nominal/max. current consumption	[A]	1.56/2.76	1.56/2.76	1.56/2.76	1.56/2.76
Logic nominal/max. current consumption	[A]	0.16/0.2	0.16/0.2	0.16/0.2	0.16/0.2
<b>Options and their characteristics</b>					
Dustproof version		1504597	1504599	1504601	1504595
IP protection class guide/base jaws		64	64	64	64
Stroke per jaw	[mm]	60	60	60	60
Min./max. gripping force	[N]	650/1950	650/1950	650/1950	650/1950
Weight	[kg]	4.61	4.61	4.61	4.61
Cleanroom class ISO 14644-1:2015		5	5	5	5

**Technical data EGU without gripping force maintenance**

Description		EGU 70-PN-N-B	EGU 70-EI-N-B	EGU 70-EC-N-B	EGU 70-IL-N-B
ID		1491572	1491576	1491578	1491568
<b>General operating data</b>					
Stroke per jaw	[mm]	70	70	70	70
Min./max. gripping force	[N]	650/1300	650/1300	650/1300	650/1300
Max. permissible finger length	[mm]	160	160	160	160
Max. permissible weight per finger	[kg]	1.4	1.4	1.4	1.4
Repeat accuracy (gripping)	[mm]	0.03	0.03	0.03	0.03
Repeat accuracy (positioning, unidirectional)	[mm]	0.05	0.05	0.05	0.05
Repeat accuracy (positioning, bi-directional)	[mm]	0.3	0.3	0.3	0.3
Closing/opening time (positioning, 30 mm stroke)	[s]	1/1	1/1	1/1	1/1
Max. speed (positioning)	[mm/s]	70	70	70	70
Max. acceleration	[mm/s²]	600	600	600	600
Weight	[kg]	4.4	4.4	4.4	4.4
Min./max. ambient temperature	[°C]	5/55	5/55	5/55	5/55
IP protection class, electronics		67	67	67	67
IP protection class guide/base jaws		40	40	40	40
Cleanroom class ISO 14644-1:2015		5	5	5	5
<b>Electrical operating data</b>					
Nominal voltage	[V]	24	24	24	24
Communication interface		PROFINET	EtherNet/IP	EtherCAT	IO-Link
BasicGrip nominal/max. current consumption	[A]	0.78/1.92	0.78/1.92	0.78/1.92	0.78/1.92
Logic nominal/max. current consumption	[A]	0.16/0.2	0.16/0.2	0.16/0.2	0.16/0.2
<b>Options and their characteristics</b>					
Dustproof version		1504598	1504600	1504603	1504596
IP protection class guide/base jaws		64	64	64	64
Stroke per jaw	[mm]	60	60	60	60
Min./max. gripping force	[N]	650/1300	650/1300	650/1300	650/1300
Weight	[kg]	4.49	4.49	4.49	4.49
Cleanroom class ISO 14644-1:2015		5	5	5	5

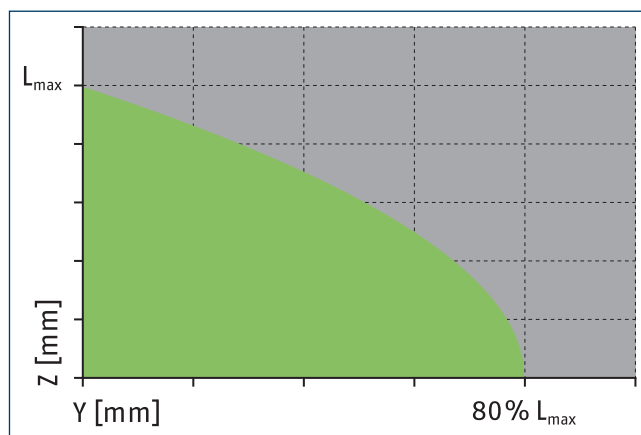
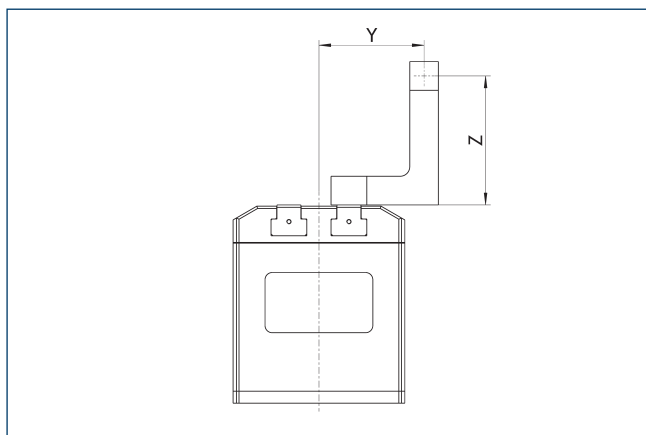
### Main view



The drawing shows the gripper in PROFINET, EtherNet/IP or EtherCAT version, with and without gripper force maintenance with opened jaws.

- |   |   |
|---|---|
| ① Gripper connection                                      | ⑨① Communication (M12, socket, 4 pin, D-coded)  |
| ② Finger connection                                       | ⑨② Screw connection with fittings for additional attachment (these centering sleeves are not included in the scope of delivery) |
| ⑦② Fit for centering sleeves                              | ⑨③ Functional ground connection   |
| ⑧① Depth of the centering sleeve hole in the counter part |   |
| ⑨① Voltage supply (M12, connector, 4 pin, L-coded)        |   |

### Maximum permitted finger projection

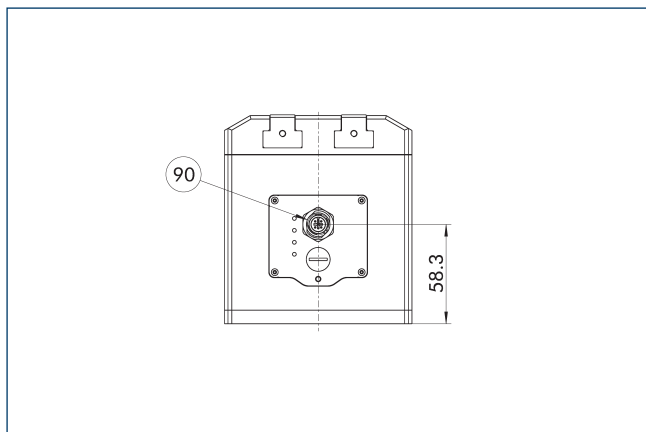


■ Permitted range

■ Inadmissible range

L<sub>max</sub> is equivalent to the maximum permitted finger length, see the technical data table.

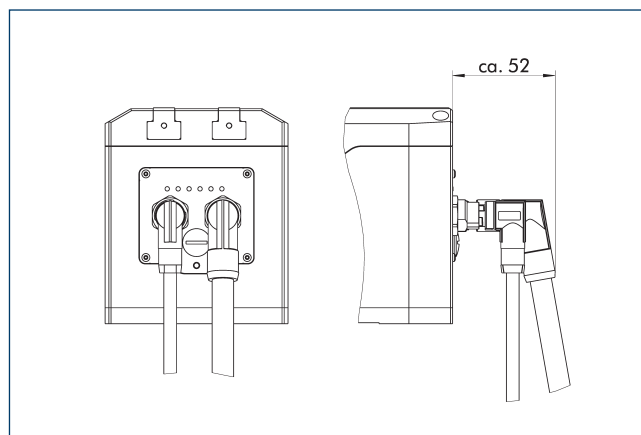
### IO-Link and Modbus RTU version



- 90 Voltage supply and communication (M12, connector, A-coded, IL: 5 pin, MB: 4 pin)

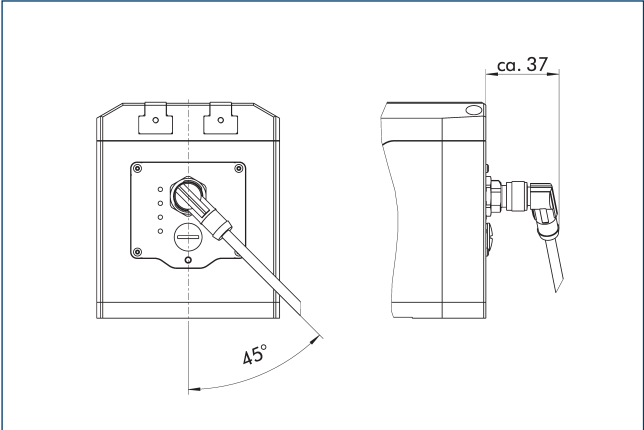
The drawing shows the changes in dimension of the IO-Link and Modbus RTU versions compared to the basic version found in the main view.

### Angled plug connectors for PROFINET, EtherNet/IP and EtherCAT version



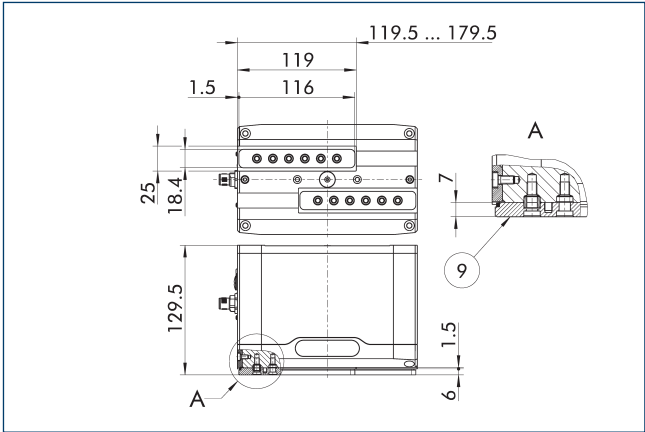
The drawing shows the direction of the cable outlet when using angled connectors. The distance from the plug connector to the gripper housing may vary depending on the cable manufacturer used.

Angled plug connectors for IO-Link and Modbus RTU version



The drawing shows the direction of the cable outlet when using angled connectors. The distance from the plug connector to the gripper housing may vary depending on the cable manufacturer used.

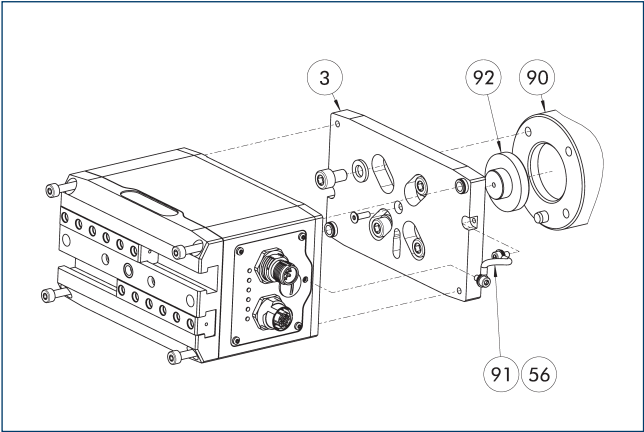
Dustproof version



⑨ For mounting screw connection diagram, see basic version

The "dustproof" option increases the degree of protection against penetrating substances. The assembly diagram shifts by the height of the intermediate jaw. The finger length is still measured from the upper edge of the gripper housing.

Robot adaptation packages single gripper

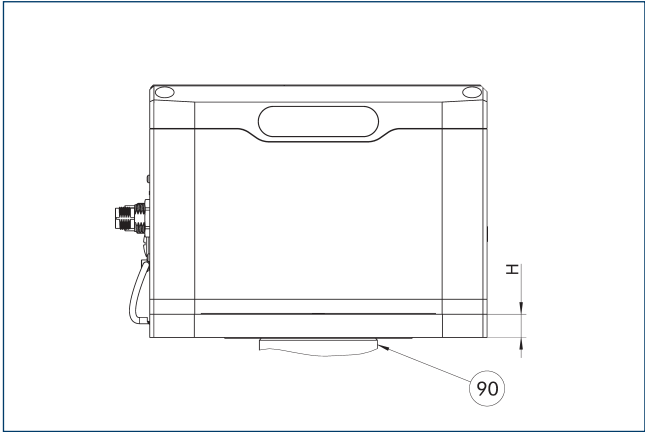


- ③ Adapter
- ⑤⑥ Included in the scope of delivery
- ⑨⑩ Robot flange
- ⑨① Cable functional ground
- ⑨② Centering disc

Robot adaptation packages for single grippers contain all components required to mechanically adapt the gripper to the desired robot flange. Depending on the flange pattern, suitable screws, centering pins and the centering collar are included.

Description	ID	Height	DIN ISO-9409 bolt circle	Manufacturer	Model
		[mm]	[mm]		
Adapter					
AKO EGU70/ISO50	1524680	12.9	50	YASKAWA	HC10DTP, HC20DTP
AKO EGU70/ISO63	1524681	12.9	63		
AKO EGU70/ISO80	1524682	12.9	80		

Robot adaptation packages single gripper

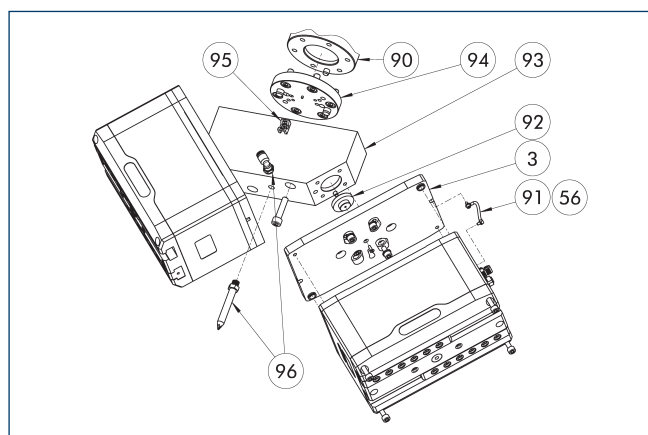


⑨⑩ Robot flange

The single-piece design enables a flat construction of the entire system. The adapter is manufactured from blank aluminum. The listed robot manufacturers with their associated models constitute useful recommendations taking the total mass into account. SCHUNK nevertheless recommends that the payload of the robot will be considered in detail.

Description	ID	Height	DIN ISO-9409 bolt circle	Manufacturer	Model
		[mm]	[mm]		
Adapter					
AKO EGU70/ISO50	1524680	12.9	50	YASKAWA	HC10DTP, HC20DTP
AKO EGU70/ISO63	1524681	12.9	63		
AKO EGU70/ISO80	1524682	12.9	80		

## Robot adaptation packages double gripper

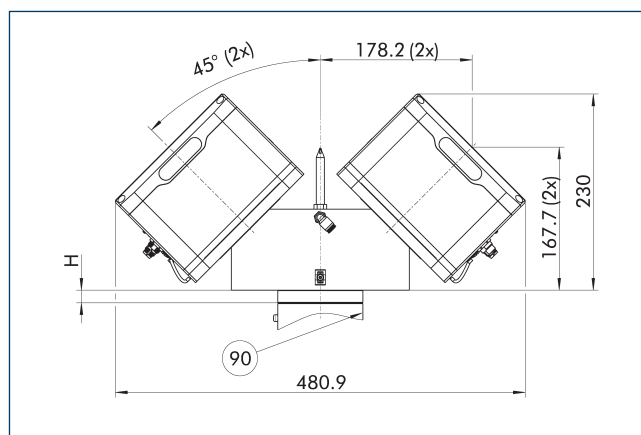


- |                                      |  |
|--------------------------------------|--|
| ③ Adapter                            | ⑨③ angle adapter   |
| ⑤⑥ Included in the scope of delivery | ⑨④ Adapter robot   |
| ⑨⑦ Robot flange                      | ⑨⑤ Cable holder (included in the scope of delivery of the cable package) |
| ⑨① Cable functional ground           | ⑨⑥ Attachment set blow-off nozzle  |
| ⑨② Centering collar gripper          |  |

Robot adaptation packages for double grippers contain all components required to mechanically adapt two grippers to the desired robot flange. Depending on the flange pattern, suitable screws, centering pins and centering material are included in the delivery. A short or long blow-off nozzle can be added as an option.

Description	ID	Height	DIN ISO-9409 bolt circle
		[mm]	[mm]
Adapter			
AKO 2xEGU70/ISO63	1524770	14.8	63
AKO 2xEGU70/ISO80	1524771	14.8	80
Attachment set blow-off nozzle (long)	1524789		

## Robot adaptation packages double gripper



- ⑨⑦ Robot flange

The adapter is manufactured from blank aluminum. The listed robot manufacturers with their associated models constitute useful recommendations taking the total mass into account. SCHUNK nevertheless recommends that the payload of the robot will be considered in detail.

Description	ID	Height	DIN ISO-9409 bolt circle
		[mm]	[mm]
Adapter			
AKO 2xEGU70/ISO63	1524770	14.8	63
AKO 2xEGU70/ISO80	1524771	14.8	80

### Robot-specific connection cables



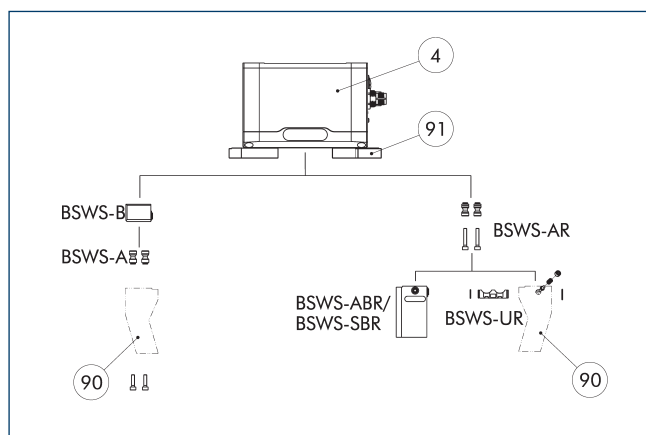
Connection cables and connection cable kits for electrical connection to specific robot models and controllers. Depending on the manufacturer, a direct connection to the tool flange is possible or external cabling is required. In combination with mechanical adapters and software modules, this allows commissioning on the robot to be carried out in just a few steps. Cables for external cable routing are designed to withstand torsion.

Description	ID	Manufacturer	Series	Model	Controller	Connection	Cable length [m]	Interface
Double gripper								
EGU/EGK CNK-DG-FANUC-CRX	1532241	FANUC	CRX	CRX-5iA, CRX-10iA, CRX-20iA, CRX-25iA	R-30iB Plus Mini	Tool, internal feed-through		Modbus RTU
EGU/EGK CNK-DG-UR-eSeries	1532238	Universal Robots	e-Series	UR3e, UR5e, UR10e, UR16e	CB5	Tool, internal feed-through		Modbus RTU
EGU CNK-DG-ABB-OmniCoreC30	1529608	ABB	IRB, CRB		OmniCore C30	Controller, external cable routing	5	EtherNet/IP
EGU CNK-DG-YASKAWA-YRC1000micro	1529621	YASKAWA	GP, HC		YRC1000MICRO	Controller, external cable routing	5	EtherNet/IP
Single gripper								
EGU/EGK CNK-SG-FANUC-CRX	1532240	FANUC	CRX	CRX-5iA, CRX-10iA, CRX-20iA, CRX-25iA	R-30iB Plus Mini	Tool, internal feed-through		Modbus RTU
EGU/EGK CNK-SG-UR-eSeries	1532237	Universal Robots	e-Series	UR3e, UR5e, UR10e, UR16e	CB5	Tool, internal feed-through		Modbus RTU
EGU CNK-SG-ABB-OmniCoreC30	1529600	ABB	IRB, CRB		OmniCore C30	Controller, external cable routing	5	EtherNet/IP
EGU CNK-SG-YASKAWA-YRC1000micro	1529619	YASKAWA	GP, HC		YRC1000MICRO	Tool, internal feed-through	5	EtherNet/IP

① The performance data of the robot must be taken into account. SCHUNK also recommends the use of a suitable strain relief.



## BSWS jaw quick-change jaw systems



④ Grippers

⑨① Intermediate jaw

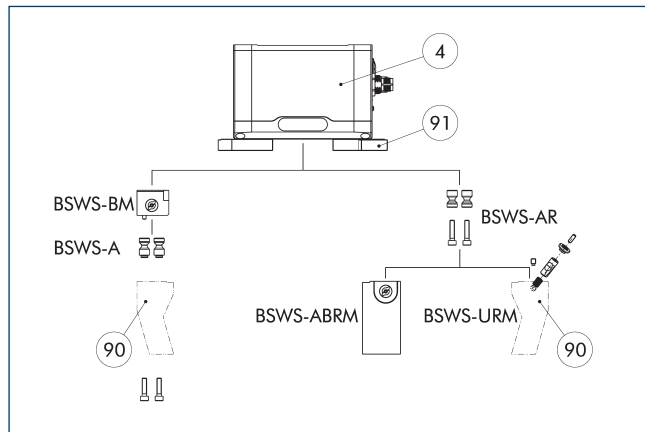
⑨① Customized gripper fingers

There are various jaw quick-change systems available for the gripper. For detailed information, please refer to the corresponding product.

Description	ID	Scope of delivery
Jaw quick-change system adapter pin		
BSWS-A 125	0303028	2
BSWS-AR 125	0300095	2
Quick-change jaw system base		
BSWS-B 125	0303029	1
Jaw quick-change system finger blank		
BSWS-ABR-PGZN-plus 125	0300075	1
BSWS-SBR-PGZN-plus 125	0300085	1
Jaw quick-change system locking mechanism		
BSWS-UR 125	0302994	1

① Only systems that are listed in the table, can be used.

## Jaw quick-change system BSWS-M



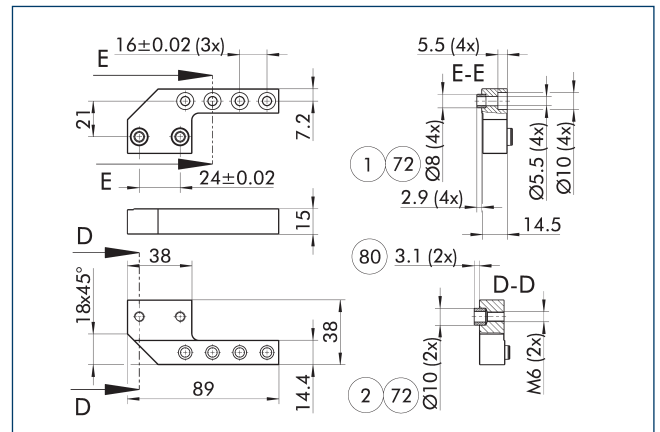
- ④ Grippers  
⑨① Customized gripper fingers

There are various jaw quick-change systems available for the gripper. For detailed information, please refer to the corresponding product.

Description	ID	Scope of delivery
Jaw quick-change system adapter pin		
BSWS-A 125	0303028	2
BSWS-AR 125	0300095	2
Quick-change jaw system base		
BSWS-BM 125	1302006	1
Jaw quick-change system finger blank		
BSWS-ABRM-PGZN-plus 125	1420854	1
Jaw quick-change system locking mechanism		
BSWS-URM 125	1398404	1

-  Only systems that are listed in the table, can be used.

## Intermediate jaw ZBA-EGU 70

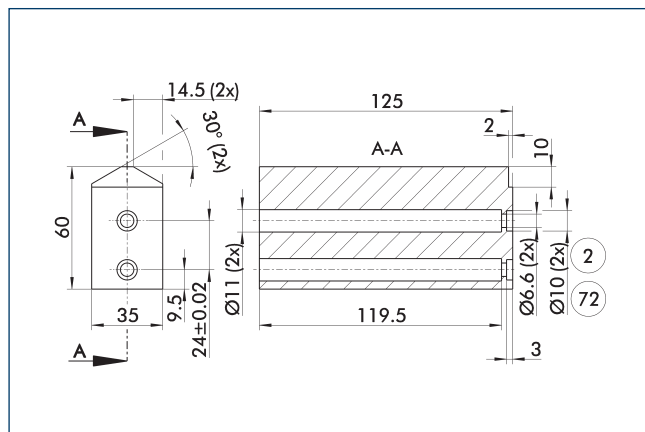


- |                      |   |
|----------------------|---|
| ① Gripper connection | ⑦② Fit for centering sleeves                              |
| ② Finger connection  | ⑧① Depth of the centering sleeve hole in the counter part |

The intermediate jaws offset the side offset of the base jaws in the Y direction and enable an aligned connection. During use, the interface of the base jaws corresponds to that of the universal gripper PGN-plus-P. This means that the extensive range of finger accessories for the PGN-plus-P can also be used for this gripper, taking into account the interfering contours, and the application limits that apply.

Description	ID	Material	Scope of delivery
Intermediate jaw			
ZBA EGU 70	1504614	Steel, corrosion-protected	2

### Finger blanks ABR/SBR-PGZN-plus 125



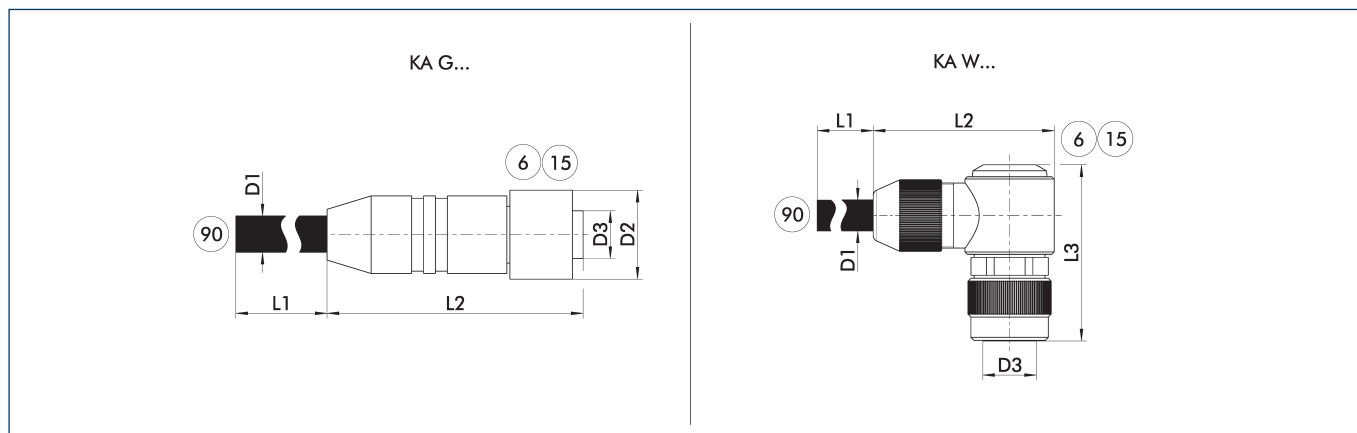
- (72) Fit for centering sleeves

The drawing shows the finger blank which can be reworked by the customer.

Description	ID	Material	Scope of delivery
Finger blank			
ABR-PGZN-plus 125	0300013	Aluminum (3.4365)	1
SBR-PGZN-plus 125	0300023	Steel (1.7131)	1

- ① In the PGL-plus-P gripper series, the use of finger blanks results in a limitation of the closing stroke. Please check this in detail in advance using the CAD data and adjust the reworking of the fingers accordingly.

## Voltage supply connection cable



KA G... Connection cable with straight plug connector  
 KA W... Connection cable with angled plug connector

⑥ Connection module side  
 ⑮ Socket

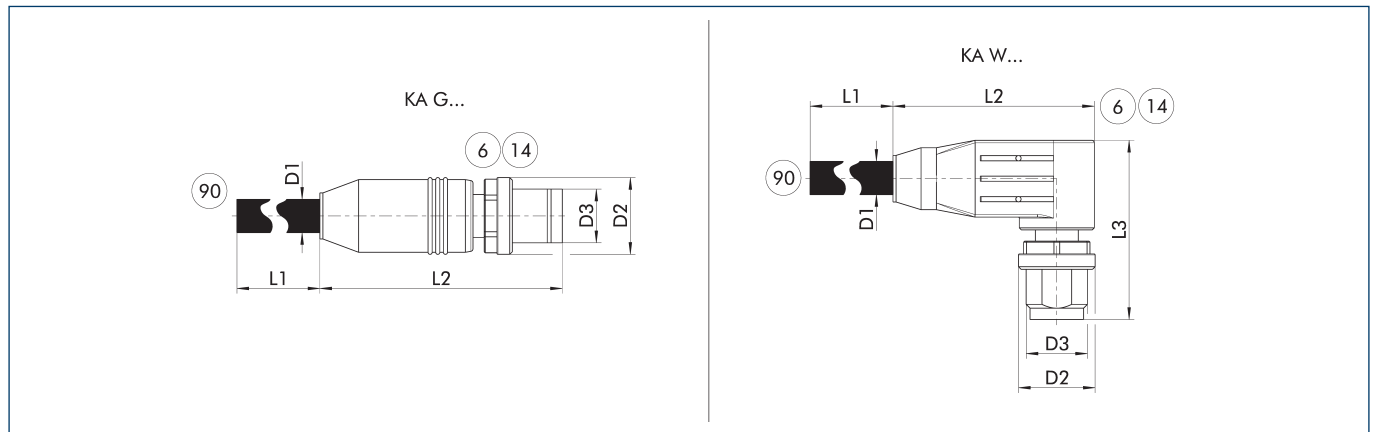
⑨⑩ Cable end with open wire strands

The connection cables are used to connect the SCHUNK product to the voltage supply.

Description	ID	L1	D1	L2	D2	L3	D3
		[m]	[mm]	[mm]	[mm]	[mm]	
Voltage supply connection cable – drag chain and torsion resistant M12 socket, straight							
KA GLN12L04-LK-00500-A	1502019	5	7.2	53.5	18		M12 L-coded
KA GLN12L04-LK-01000-A	1502023	10	7.2	53.5	18		M12 L-coded
Voltage supply connection cable – drag chain and torsion resistant M12 socket, angled							
KA WLN12L04-LK-00500-A	1502028	5	7.2	49	18	40	M12 L-coded
KA WLN12L04-LK-01000-A	1502032	10	7.2	49	18	40	M12 L-coded

① Please observe the min. bending radius for cable track-compatible cables or the max. torsion angle for torsion-compatible cables. These are generally 10 times the cable diameter or +/- 180°/m. Please refer to the product documentation for information about max. cable length and min. wire cross section.

### Connection cable communication PROFINET, EtherNet/IP and EtherCAT



KA G... Straight plug connector  
KA W... Angular plug connector

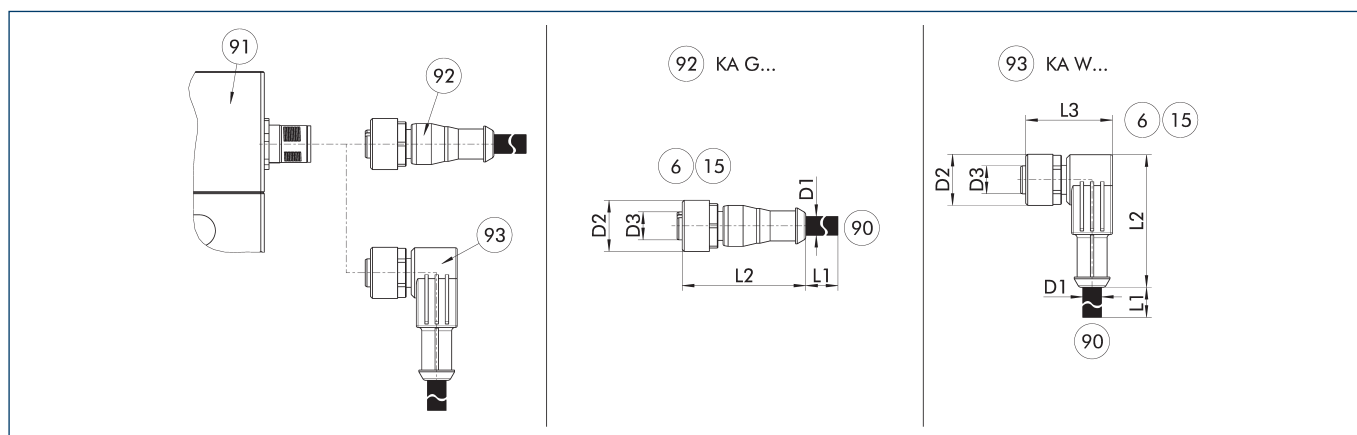
⑥ Connection module side  
⑭ Connector  
⑨⑩ Cable ends with second plug connector

The communication cables are suitably assembled for the mechatronic products from SCHUNK and can be used for the PROFINET, EtherNet/IP and EtherCAT communication interfaces. They always have an M12 plug connector on the module side (D-coded, connector). The plug connectors are designed straight (KA G...) or angled (KA W...) on the module side. On the second side, the cables either have a straight M12 plug connector (D-coded, connector) or an RJ45 plug connector.

Description	ID	L1	D1	L2	D2	L3	D3
		[m]	[mm]	[mm]	[mm]	[mm]	
EtherCAT connection cable star distributor M12 D-coded socket, straight; on M8 A-coded connector, straight							
KA GGN12D04-08A04-ET-00020-A	1521990	0.2	6.5	47.3	14.8		M12
Communication cable suitable for drag chain M12 connector, straight – to M12 connector, straight							
KA GGN12D04-12D04-ET-00500-A	1505114	5	6.5	47.3	14.8		M12
KA GGN12D04-12D04-ET-01000-A	1505119	10	6.5	47.3	14.8		M12
Communication cable suitable for drag chain M12 connector, straight – to RJ45 connector, straight							
KA GGN12D04-RJ45-ET-00200-A	1511256	2	6.5	47.3	14.8		M12
KA GGN12D04-RJ45-ET-00500-A	1354681	5	6.5	47.8	14.8		M12
KA GGN12D04-RJ45-ET-01000-A	1505143	10	6.5	47.3	14.8		M12
Communication cable suitable for drag chain M12 connector, angled – to M12 connector, straight							
KA WGN12D04-12D04-ET-00500-A	1354661	5	6.5	47.8	14.8		M12
KA WGN12D04-12D04-ET-01000-A	1505141	10	6.5	36.3	14.8	30	M12
Communication cable suitable for drag chain M12 connector, angled – to RJ45 connector, straight							
KA WGN12D04-RJ45-ET-00500-A	1354688	5	6.5	36.3	14.8	30	M12
KA WGN12D04-RJ45-ET-01000-A	1505142	10	6.5	36.3	14.8	30	M12
Communication cable suitable for torsion-resistant M12 connector, straight – to M12 connector, straight							
KAR GGN12D04-12D04-ET-00500-A	1505146	5	6.5	47.8	14.8		M12
KAR GGN12D04-12D04-ET-01000-A	1505147	10	6.5	47.3	14.8		M12
Communication cable suitable for drag chain-suitable M12 connector, straight – to RJ45 connector, straight							
KAR GGN12D04-RJ45-ET-00500-A	1354677	5	6.5	47.8	14.8		M12
KAR GGN12D04-RJ45-ET-01000-A	1505160	10	6.5	47.3	14.8		M12
Communication cable suitable for torsion-resistant M12 connector, angled – to M12 connector, straight							
KAR WGN12D04-12D04-ET-00500-A	1354674	5	6.5	47.8	14.8		M12
KAR WGN12D04-12D04-ET-01000-A	1505148	10	6.5	36.3	14.8	30	M12
Communication cable suitable for torsion-resistant M12 connector, angled – to RJ45 connector, straight							
KAR WGN12D04-RJ45-ET-00500-A	1354692	5	6.5	36.3	14.8	30	M12
KAR WGN12D04-RJ45-ET-01000-A	1505149	10	6.5	36.3	14.8	30	M12

① Please observe the min. bending radius for cable track-compatible cables or the max. torsion angle for torsion-compatible cables. These are generally 10 times the cable diameter or +/- 180°/m.

## Connection cable for voltage supply and communication IO-Link



KA G... Connection cable with straight socket  
KA W... Connection cable with angular socket

⑥ Connection module side  
⑮ Socket  
⑨⑩ SAC connection cable with open wire strands

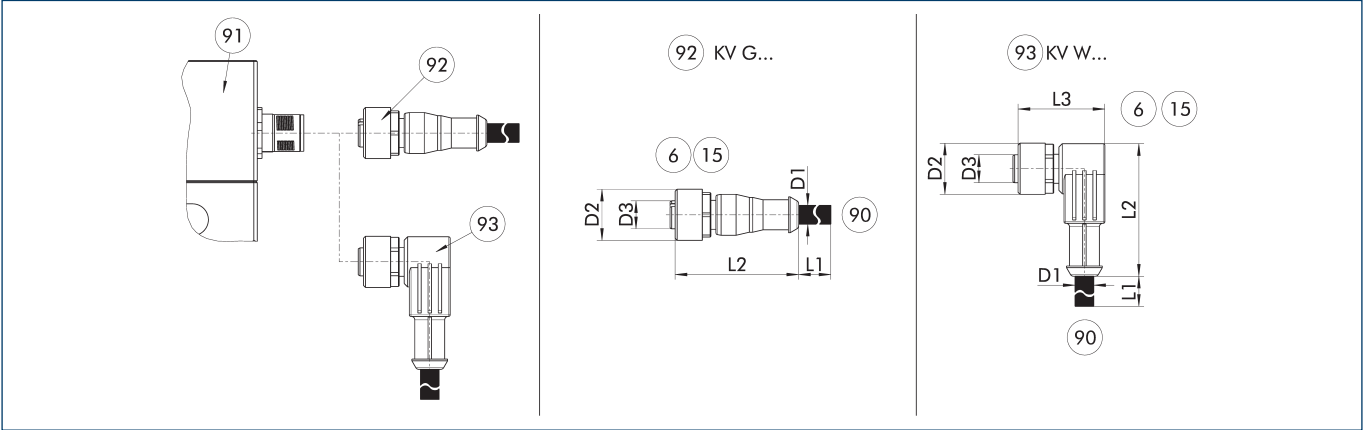
⑨① Connection plug component  
⑨② Cable with straight female connector  
⑨③ Cable with angled female connector

The connection cable is ideal for connecting the corresponding components to the control system. The connection cable has a 5-pin M12 socket on one side, and open wire strands on the other side for individual connections. The connection cables are suitable for use both in the cable track as well as in torsion applications.

Description	ID	L1 [m]	D1 [mm]	L2 [mm]	D2 [mm]	L3 [mm]	D3
IO-Link connection cable – drag chain and torsion-compatible							
KA GLN1205-IOL-00500-A	1387207	5	4.8	38	15		M12
KA GLN1205-IOL-01000-A	1387209	10	4.8	38	15		M12
KA WLN1205-IOL-00500-A	1387210	5	4.8	39	15	28	M12
KA WLN1205-IOL-01000-A	1387211	10	4.8	39	15	28	M12

① Please observe the min. bending radius for cable track-compatible cables or the max. torsion angle for torsion-compatible cables. These are generally 10 times the cable diameter or +/- 180°/m.

**Cable extension for voltage supply and communication IO-Link**



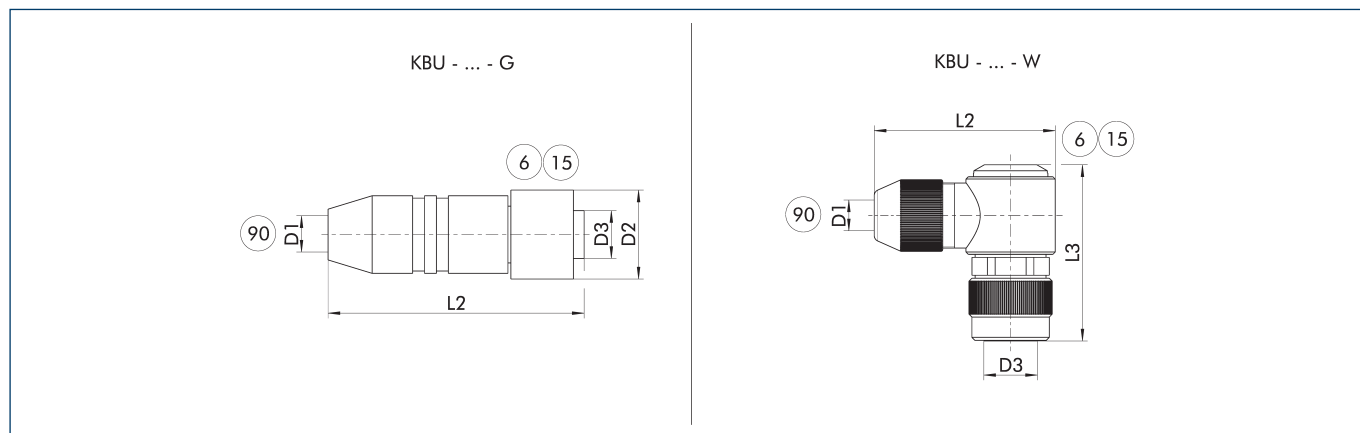
- KV G... Cable extension with straight socket  
 KV W... Cable extension with angled socket
- 6 Connection module side  
 15 Socket  
 90 Cable end with straight connector
- 91 Connection plug component  
 92 Cable with straight female connector  
 93 Cable with angled female connector

The cable extensions are ideal for connecting the relevant components to the control system, or for use as extension cables. The cable extensions have a 5-pin M12 connector with a straight or angled design on the module side and a 5-pin M12 plug with a straight design on the other side. The cable extensions are suitable for use in the cable track and in torsion applications.

Description	ID	L1 [m]	D1 [mm]	L2 [mm]	D2 [mm]	L3 [mm]	D3
IO-Link cable extension – cable track and torsion-compatible							
KV GGN1205-IOL-00200-A	1387195	2	4.8	41	15		M12
KV GGN1205-IOL-00500-A	1387199	5	4.8	41	15		M12
KV WGN1205-IOL-00200-A	1387202	2	4.8	39	15	28	M12
KV WGN1205-IOL-00500-A	1387205	5	4.8	39	15	28	M12

ⓘ Please observe the min. bending radius for cable track-compatible cables or the max. torsion angle for torsion-compatible cables. These are generally 10 times the cable diameter or +/- 180°/m.

## Power supply plug-in connector



KBU - ... - G Socket with straight outlet

KBU - ... - W Socket with angular outlet

⑥ Connection module side

⑮ Socket

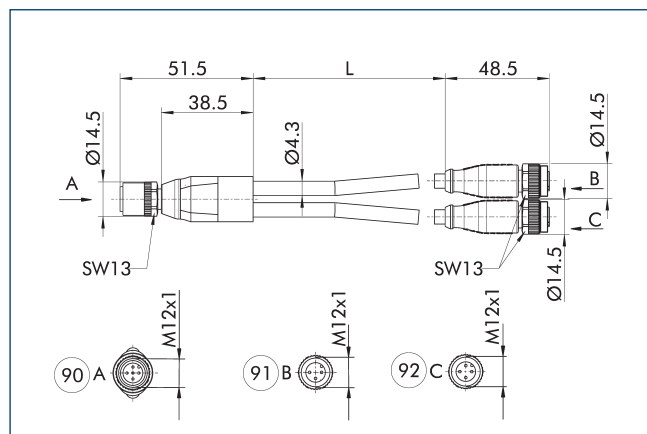
⑨① D1 – max. diameter connection cable

The plug connectors are used to connect the SCHUNK product to the voltage supply. A customer cable can be used for this. The individual wire strands are clamped using screw connections in the plug connector.

Description	ID	D1 (max.) [mm]	L2 [mm]	D2 [mm]	L3 [mm]	D3
Plug connector						
KBU-M12L-G	1502044	13	70	25		M12 L-coded
KBU-M12L-W 4P	1543957	13	49	25	99	M12 L-coded

① For the connection cable, a cross-section for each individual wire strand of 1.5 mm<sup>2</sup> is recommended. Please refer to the product documentation for information about max. cable length and min. wire cross section.

## Y-distributor for IO-Link for splitting logic and power supply



⑨① Grippers

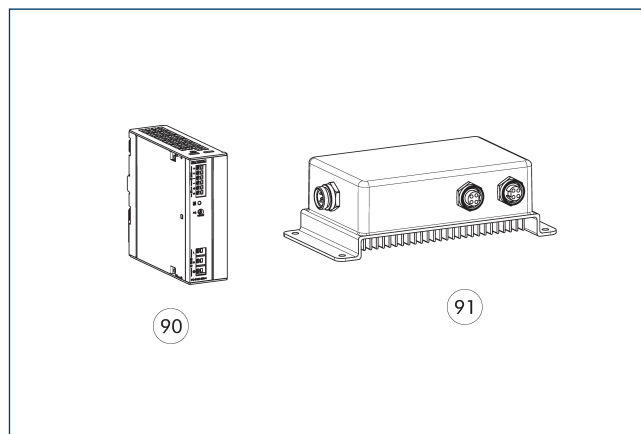
⑨② Power (24 V power supply unit)

⑨① Logic (IO-Link master)

The Y-distributor enables power to be supplied from a separate voltage source and is recommended when the current consumption of the product exceeds the current output of the IO-Link master. The logic supply and the IO-Link communication continue to run via the IO-Link master. IO-Link masters with port class A or port class B can be used.

Description	ID	Length [m]
Y-distributor, M12 socket, straight – on 2xM12 plugs, straight A-coded		
Y-Verteiler M12 5pol. auf 1x M12 3pol.	1523560	0.3

## Switched-mode power supply



⑨① 24 V power supply unit IP2

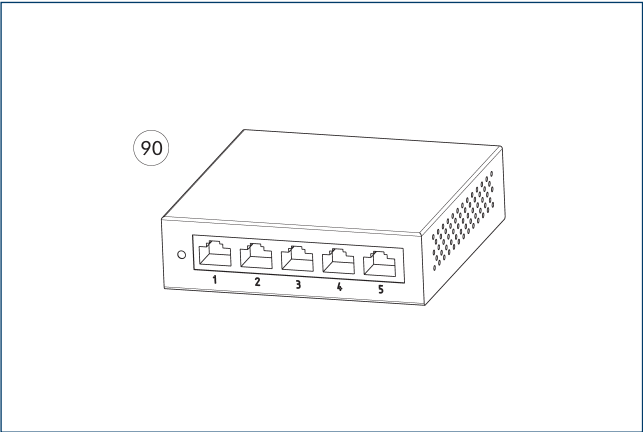
⑨② 24 V power supply unit IP67

The power supply with an output voltage of 24 V and an input voltage range of 100 V – 240 V are matched to the power supply of our SCHUNK products. Whether for mounting in the control cabinet on DIN rail in protection class IP20 or directly in the field in protection class IP67: the power supply units deliver voltage where it is needed. We will be happy to assist you with further selection.

Description	ID	
24 V power supply unit IP2		
BLOCK PC-0124-050-0	31001408	
24 V power supply unit IP67		
TURCK PSU67-12-2480/M	1524336	

① For the power supply IP67, there are customizable plug connectors for connection to the power supply unit included in the scope of delivery.

Switch



90 Ethernet 5-port switch

The switches enable easy expansion of a high-speed network using wired connections. With the switch, several SCHUNK products can be included in a network and thus controlled via a PLC, for example.

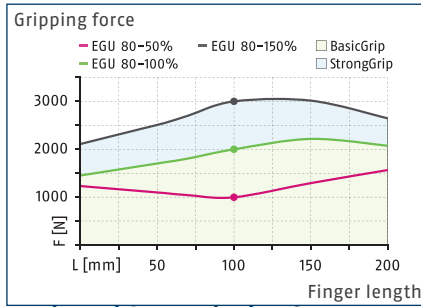
Description	ID	
Ethernet switch		
D-Link DGS-105 5-Port Ethernet Switch	1526496	



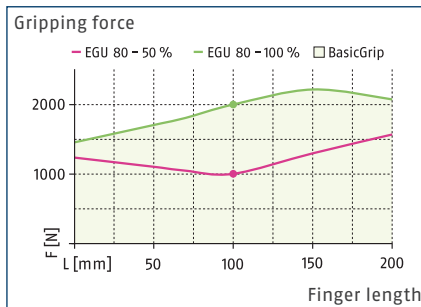




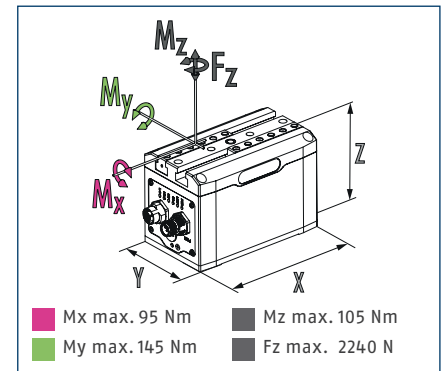
### Version with gripping force maintenance device



### Version without gripping force maintenance



### Dimensions and maximum loads



① The indicated moments and forces are static values, apply for each base jaw and may appear simultaneously. Loads may additionally occur to the moment produced by the gripping force itself.

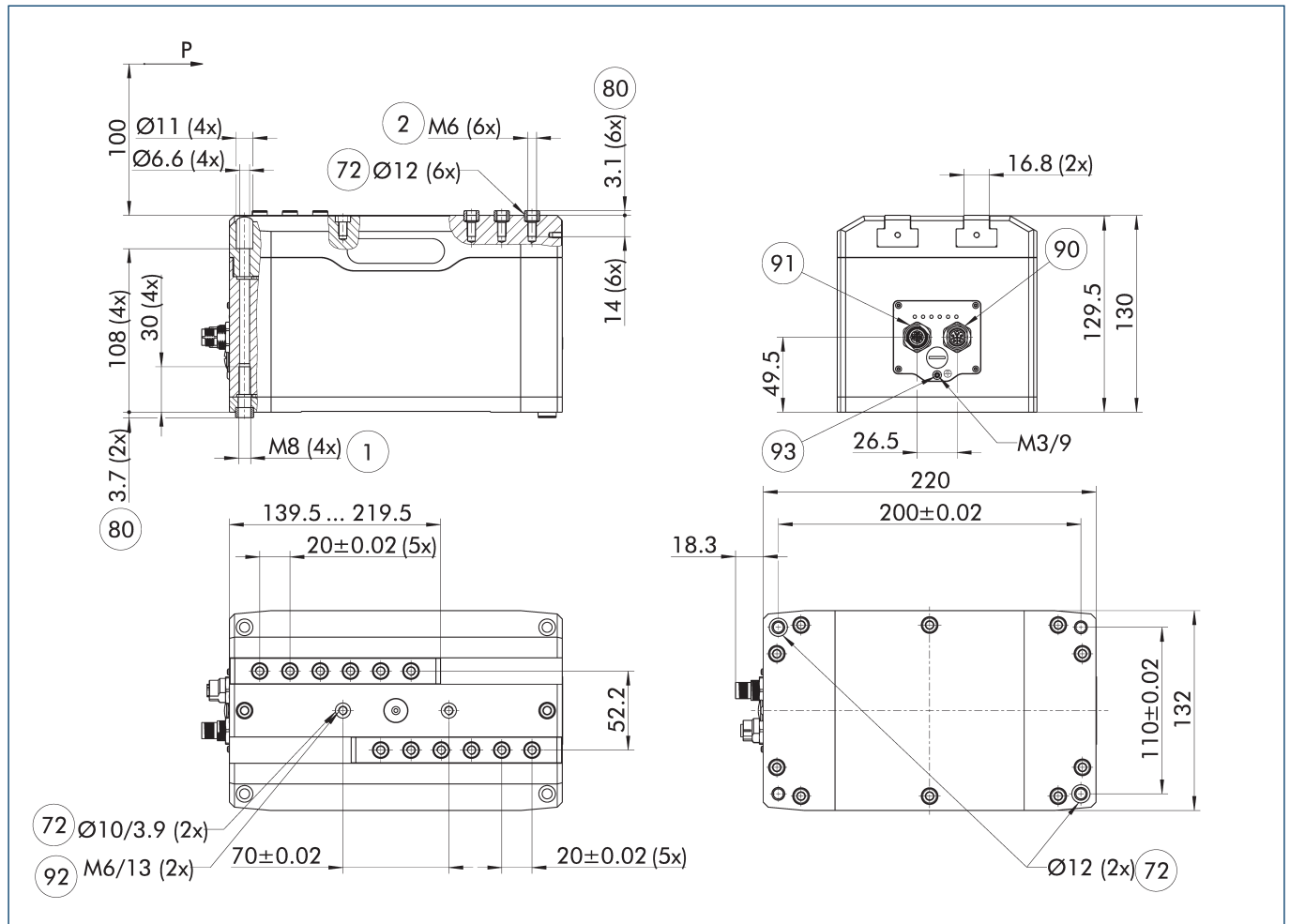
### Technical data EGU with gripping force maintenance

Description		EGU 80-PN-M-B	EGU 80-EI-M-B	EGU 80-EC-M-B	EGU 80-IL-M-B
ID		1491586	1491588	1491590	1491583
<b>General operating data</b>					
Stroke per jaw	[mm]	80	80	80	80
Min./max. gripping force	[N]	1000/3000	1000/3000	1000/3000	1000/3000
Min./max. gripping force maintenance	[%]	90/100	90/100	90/100	90/100
Max. permissible finger length	[mm]	200	200	200	200
Max. permissible weight per finger	[kg]	2.4	2.4	2.4	2.4
Repeat accuracy (gripping)	[mm]	0.03	0.03	0.03	0.03
Repeat accuracy (positioning, unidirectional)	[mm]	0.05	0.05	0.05	0.05
Repeat accuracy (positioning, bi-directional)	[mm]	0.15	0.15	0.15	0.15
Closing/opening time (positioning, 30 mm stroke)	[s]	1/1	1/1	1/1	1/1
Max. speed (positioning)	[mm/s]	70	70	70	70
Max. acceleration	[mm/s <sup>2</sup> ]	500	500	500	500
Weight	[kg]	7.72	7.72	7.72	7.72
Min./max. ambient temperature	[°C]	5/55	5/55	5/55	5/55
IP protection class, electronics		67	67	67	67
IP protection class guide/base jaws		40	40	40	40
Cleanroom class ISO 14644-1:2015		5	5	5	5
<b>Electrical operating data</b>					
Nominal voltage	[V]	24	24	24	24
Communication interface		PROFINET	EtherNet/IP	EtherCAT	IO-Link
BasicGrip nominal/max. current consumption	[A]	0.96/4.56	0.96/4.56	0.96/4.56	0.96/4.56
StrongGrip nominal/max. current consumption	[A]	1.8/3.6	1.8/3.6	1.8/3.6	1.8/3.6
Logic nominal/max. current consumption	[A]	0.16/0.2	0.16/0.2	0.16/0.2	0.16/0.2
<b>Options and their characteristics</b>					
Dustproof version		1504606	1504608	1504610	1504604
IP protection class guide/base jaws		64	64	64	64
Stroke per jaw	[mm]	70	70	70	70
Min./max. gripping force	[N]	1000/3000	1000/3000	1000/3000	1000/3000
Weight	[kg]	7.8	7.8	7.8	7.8
Cleanroom class ISO 14644-1:2015		5	5	5	5

**Technical data EGU without gripping force maintenance**

Description		EGU 80-PN-N-B	EGU 80-EI-N-B	EGU 80-EC-N-B	EGU 80-IL-N-B
ID		1491587	1491589	1491591	1491584
<b>General operating data</b>					
Stroke per jaw	[mm]	80	80	80	80
Min./max. gripping force	[N]	1000/2000	1000/2000	1000/2000	1000/2000
Max. permissible finger length	[mm]	200	200	200	200
Max. permissible weight per finger	[kg]	2.4	2.4	2.4	2.4
Repeat accuracy (gripping)	[mm]	0.03	0.03	0.03	0.03
Repeat accuracy (positioning, unidirectional)	[mm]	0.05	0.05	0.05	0.05
Repeat accuracy (positioning, bi-directional)	[mm]	0.15	0.15	0.15	0.15
Closing/opening time (positioning, 30 mm stroke)	[s]	1/1	1/1	1/1	1/1
Max. speed (positioning)	[mm/s]	70	70	70	70
Max. acceleration	[mm/s²]	500	500	500	500
Weight	[kg]	7.58	7.58	7.58	7.58
Min./max. ambient temperature	[°C]	5/55	5/55	5/55	5/55
IP protection class, electronics		67	67	67	67
IP protection class guide/base jaws		40	40	40	40
Cleanroom class ISO 14644-1:2015		5	5	5	5
<b>Electrical operating data</b>					
Nominal voltage	[V]	24	24	24	24
Communication interface		PROFINET	EtherNet/IP	EtherCAT	IO-Link
BasicGrip nominal/max. current consumption	[A]	0.72/4.2	0.72/4.2	0.72/4.2	0.72/4.2
Logic nominal/max. current consumption	[A]	0.16/0.2	0.16/0.2	0.16/0.2	0.16/0.2
<b>Options and their characteristics</b>					
Dustproof version		1504607	1504609	1504611	1504605
IP protection class guide/base jaws		64	64	64	64
Stroke per jaw	[mm]	70	70	70	70
Min./max. gripping force	[N]	1000/2000	1000/2000	1000/2000	1000/2000
Weight	[kg]	7.66	7.66	7.66	7.66
Cleanroom class ISO 14644-1:2015		5	5	5	5

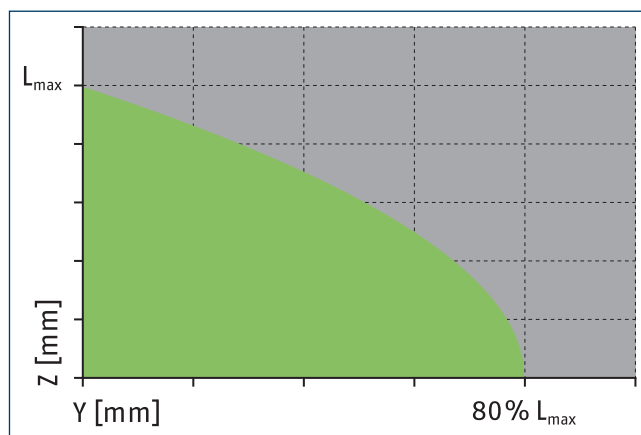
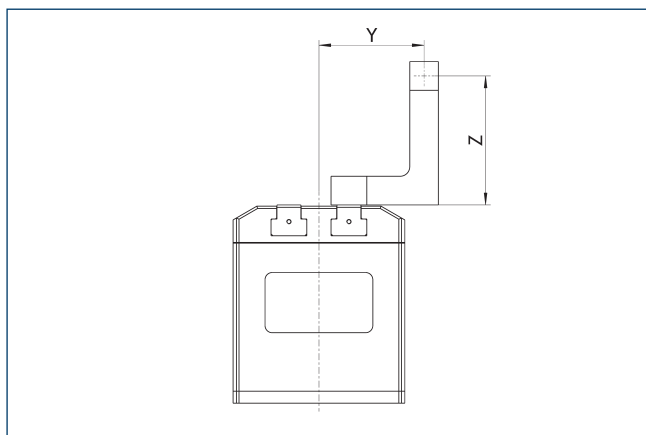
### Main view



The drawing shows the gripper in PROFINET, EtherNet/IP or EtherCAT version, with and without gripper force maintenance with opened jaws.

- |   |   |
|---|---|
| ① Gripper connection                                      | ⑨① Communication (M12, socket, 4 pin, D-coded)  |
| ② Finger connection                                       | ⑨② Screw connection with fittings for additional attachment (these centering sleeves are not included in the scope of delivery) |
| ⑦② Fit for centering sleeves                              | ⑨③ Functional ground connection   |
| ⑧① Depth of the centering sleeve hole in the counter part |   |
| ⑨① Voltage supply (M12, connector, 4 pin, L-coded)        |   |

### Maximum permitted finger projection

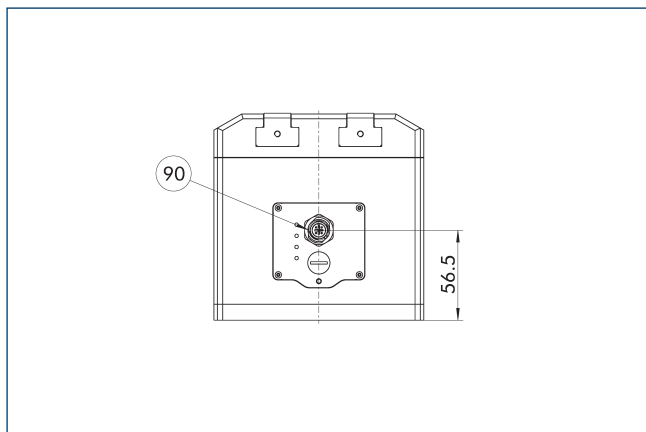


■ Permitted range

■ Inadmissible range

L<sub>max</sub> is equivalent to the maximum permitted finger length, see the technical data table.

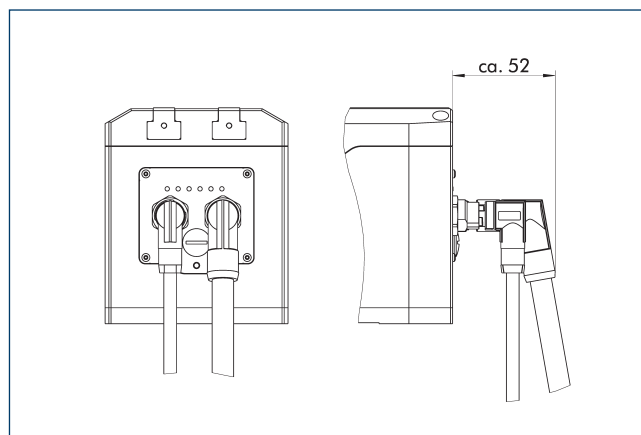
### IO-Link and Modbus RTU version



- 90 Voltage supply and communication (M12, connector, A-coded, IL: 5 pin, MB: 4 pin)

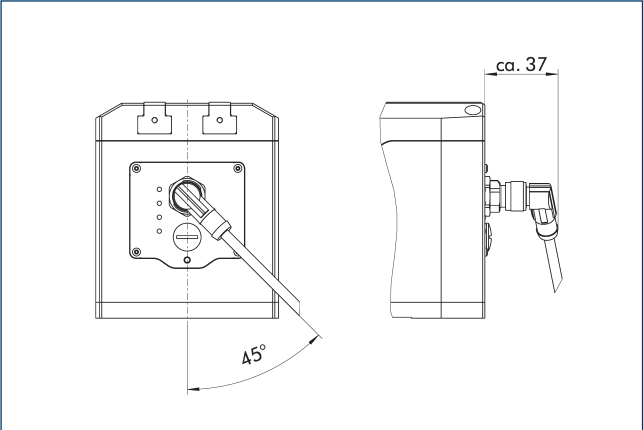
The drawing shows the changes in dimension of the IO-Link and Modbus RTU versions compared to the basic version found in the main view.

### Angled plug connectors for PROFINET, EtherNet/IP and EtherCAT version



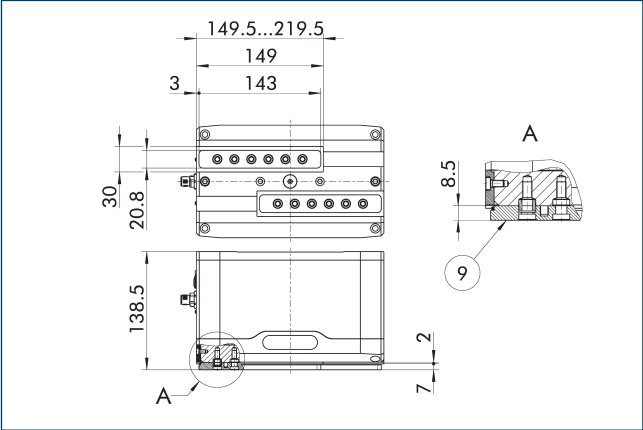
The drawing shows the direction of the cable outlet when using angled connectors. The distance from the plug connector to the gripper housing may vary depending on the cable manufacturer used.

Angled plug connectors for IO-Link and Modbus RTU version



The drawing shows the direction of the cable outlet when using angled connectors. The distance from the plug connector to the gripper housing may vary depending on the cable manufacturer used.

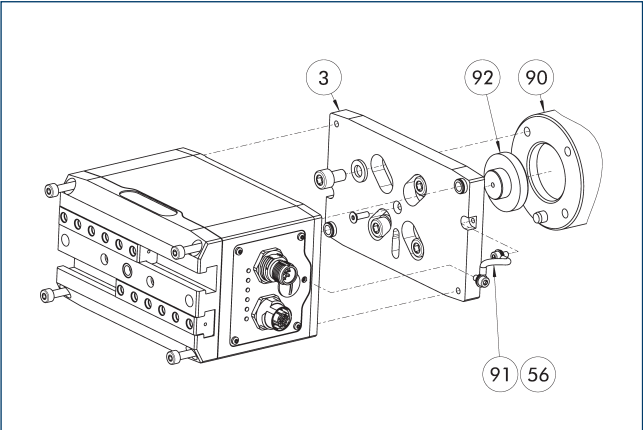
Dustproof version



9 For mounting screw connection diagram, see basic version

The "dustproof" option increases the degree of protection against penetrating substances. The assembly diagram shifts by the height of the intermediate jaw. The finger length is still measured from the upper edge of the gripper housing.

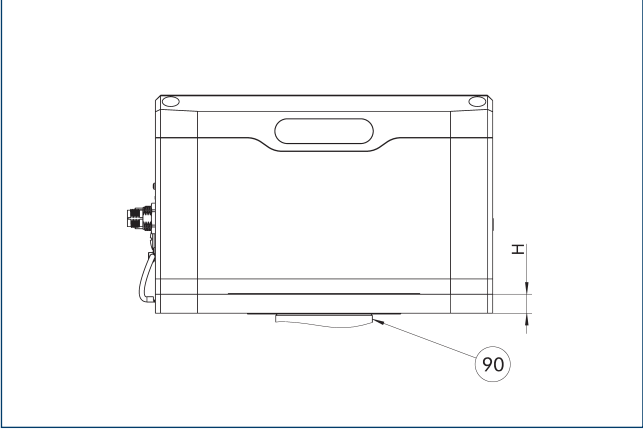
Robot adaptation packages single gripper



- 3 Adapter
- 56 Included in the scope of delivery
- 90 Robot flange
- 91 Cable functional ground
- 92 Centering disc

Robot adaptation packages for single grippers contain all components required to mechanically adapt the gripper to the desired robot flange. Depending on the flange pattern, suitable screws, centering pins and the centering collar are included.

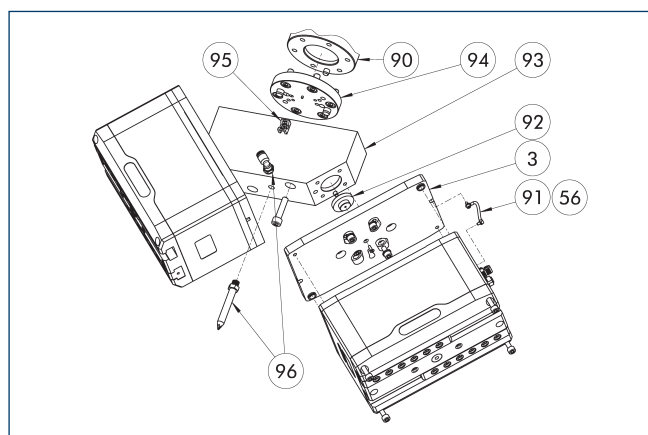
Description	ID	Height	DIN ISO-9409 bolt circle	Manufacturer	Model
		[mm]	[mm]		
Adapter					
AKO EGU80/ISO50	1524683	12.9	50	YASKAWA	HC20DTP
AKO EGU80/ISO63	1524684	12.9	63		
AKO EGU80/ISO80	1524687	12.9	80		



90 Robots

Description	ID	Height	DIN ISO-9409 bolt circle	Manufacturer	Model
		[mm]	[mm]		
Adapter					
AKO EGU80/ISO50	1524683	12.9	50	YASKAWA	HC20DTP
AKO EGU80/ISO63	1524684	12.9	63		
AKO EGU80/ISO80	1524687	12.9	80		

## Robot adaptation packages double gripper

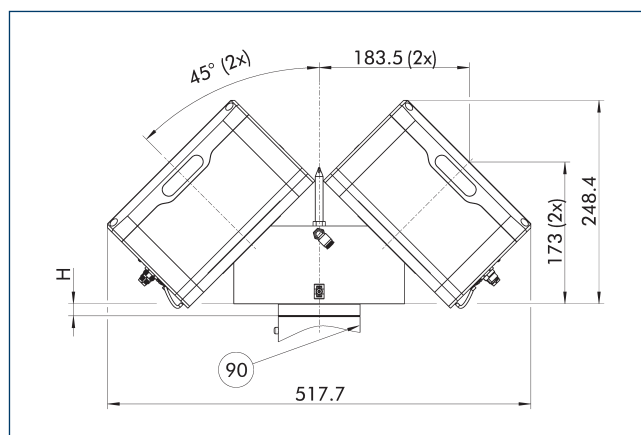


- |                                      |  |
|--------------------------------------|--|
| 3 Adapter                            | 93 angle adapter   |
| 56 Included in the scope of delivery | 94 Adapter robot   |
| 90 Robot flange                      | 95 Cable holder (included in the scope of delivery of the cable package) |
| 91 Cable functional ground           | 96 Attachment set blow-off nozzle  |
| 92 Centering collar gripper          |  |

Robot adaptation packages for double grippers contain all components required to mechanically adapt two grippers to the desired robot flange. Depending on the flange pattern, suitable screws, centering pins and centering material are included in the delivery. A short or long blow-off nozzle can be added as an option.

Description	ID	Height	DIN ISO-9409 bolt circle
		[mm]	[mm]
Adapter			
AKO 2xEGU80/ISO80	1524772	14.8	80
Attachment set blow-off nozzle (long)	1524789		

## Robot adaptation packages double gripper



- 90 Robot flange

The adapter is manufactured from blank aluminum. The listed robot manufacturers with their associated models constitute useful recommendations taking the total mass into account. SCHUNK nevertheless recommends that the payload of the robot will be considered in detail.

Description	ID	Height	DIN ISO-9409 bolt circle
		[mm]	[mm]
Adapter			
AKO 2xEGU80/ISO80	1524772	14.8	80

### Robot-specific connection cables



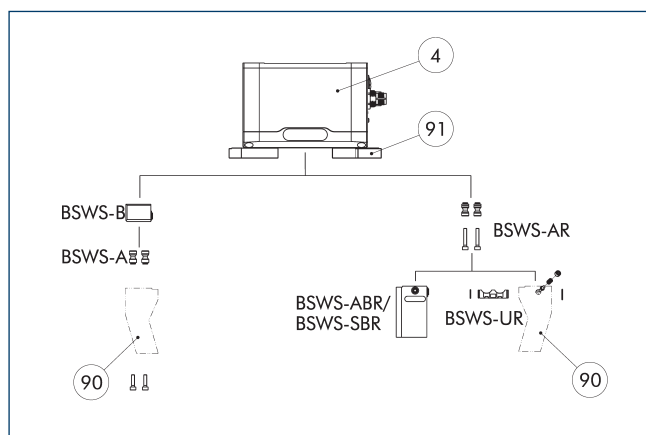
Connection cables and connection cable kits for electrical connection to specific robot models and controllers. Depending on the manufacturer, a direct connection to the tool flange is possible or external cabling is required. In combination with mechanical adapters and software modules, this allows commissioning on the robot to be carried out in just a few steps. Cables for external cable routing are designed to withstand torsion.

Description	ID	Manufacturer	Series	Model	Controller	Connection	Cable length [m]	Interface
Double gripper								
EGU/EGK CNK-DG-FANUC-CRX	1532241	FANUC	CRX	CRX-5iA, CRX-10iA, CRX-20iA, CRX-25iA	R-30iB Plus Mini	Tool, internal feed-through		Modbus RTU
EGU/EGK CNK-DG-UR-eSeries	1532238	Universal Robots	e-Series	UR3e, UR5e, UR10e, UR16e	CB5	Tool, internal feed-through		Modbus RTU
EGU CNK-DG-ABB-OmniCoreC30	1529608	ABB	IRB, CRB		OmniCore C30	Controller, external cable routing	5	EtherNet/IP
EGU CNK-DG-YASKAWA-YRC1000micro	1529621	YASKAWA	GP, HC		YRC1000MICRO	Controller, external cable routing	5	EtherNet/IP
Single gripper								
EGU/EGK CNK-SG-FANUC-CRX	1532240	FANUC	CRX	CRX-5iA, CRX-10iA, CRX-20iA, CRX-25iA	R-30iB Plus Mini	Tool, internal feed-through		Modbus RTU
EGU/EGK CNK-SG-UR-eSeries	1532237	Universal Robots	e-Series	UR3e, UR5e, UR10e, UR16e	CB5	Tool, internal feed-through		Modbus RTU
EGU CNK-SG-ABB-OmniCoreC30	1529600	ABB	IRB, CRB		OmniCore C30	Controller, external cable routing	5	EtherNet/IP
EGU CNK-SG-YASKAWA-YRC1000micro	1529619	YASKAWA	GP, HC		YRC1000MICRO	Tool, internal feed-through	5	EtherNet/IP

① The performance data of the robot must be taken into account. SCHUNK also recommends the use of a suitable strain relief.



## BSWS jaw quick-change jaw systems



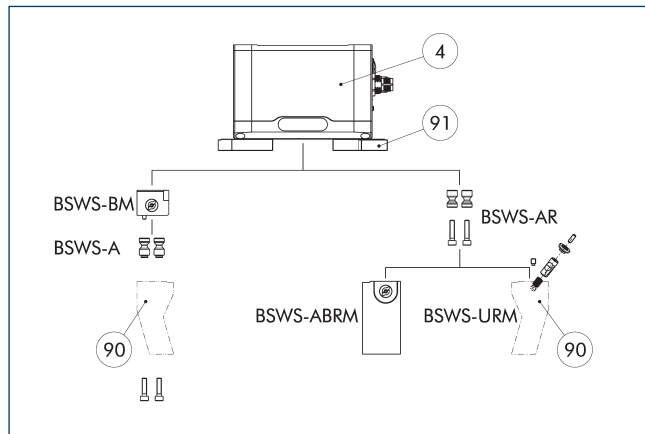
- ④ Grippers
- ⑨① Intermediate jaw
- ⑨① Customized gripper fingers

There are various jaw quick-change systems available for the gripper. For detailed information, please refer to the corresponding product.

Description	ID	Scope of delivery
Jaw quick-change system adapter pin		
BSWS-A 160	0303030	2
BSWS-AR 160	0300096	2
Quick-change jaw system base		
BSWS-B 160	0303031	1
Jaw quick-change system finger blank		
BSWS-ABR-PGZN-plus 160	0300076	1
BSWS-SBR-PGZN-plus 160	0300086	1
Jaw quick-change system locking mechanism		
BSWS-UR 160	0302995	1

① Only systems that are listed in the table, can be used.

### Jaw quick-change system BSWS-M



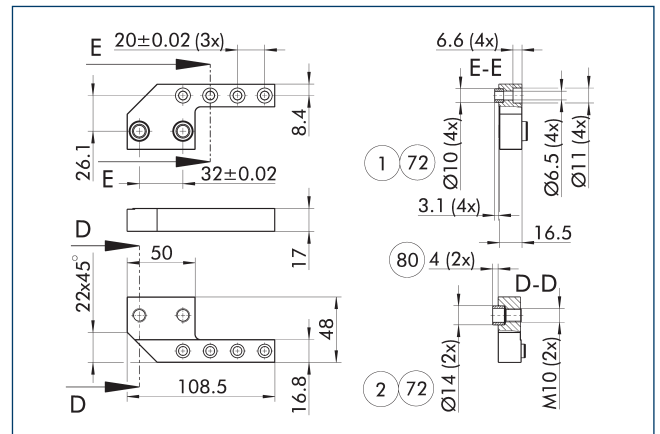
- ④ Grippers
- ⑨① Intermediate jaw
- ⑨① Customized gripper fingers

There are various jaw quick-change systems available for the gripper. For detailed information, please refer to the corresponding product.

Description	ID	Scope of delivery
<b>Jaw quick-change system adapter pin</b>		
BSWS-A 160	0303030	2
BSWS-AR 160	0300096	2
<b>Quick-change jaw system base</b>		
BSWS-BM 160	1418962	1
<b>Jaw quick-change system finger blank</b>		
BSWS-ABRM-PGZN-plus 160	1420855	1
<b>Jaw quick-change system locking mechanism</b>		
BSWS-URM 160	1420541	1

① Only systems that are listed in the table, can be used.

### Intermediate jaw ZBA-EGU 80

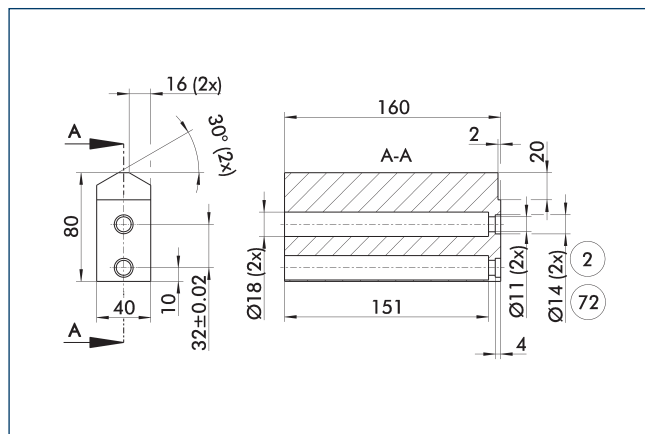


- ① Gripper connection
- ② Finger connection
- ⑦② Fit for centering sleeves
- ⑧① Depth of the centering sleeve hole in the counter part

The intermediate jaws offset the side offset of the base jaws in the Y direction and enable an aligned connection. During use, the interface of the base jaws corresponds to that of the universal gripper PGN-plus-P. This means that the extensive range of finger accessories for the PGN-plus-P can also be used for this gripper, taking into account the interfering contours, and the application limits that apply.

Description	ID	Material	Scope of delivery
<b>Intermediate jaw</b>			
ZBA EGU 80	1504615	Steel, corrosion-protected	2

### Finger blanks ABR/SBR-PGZN-plus 160



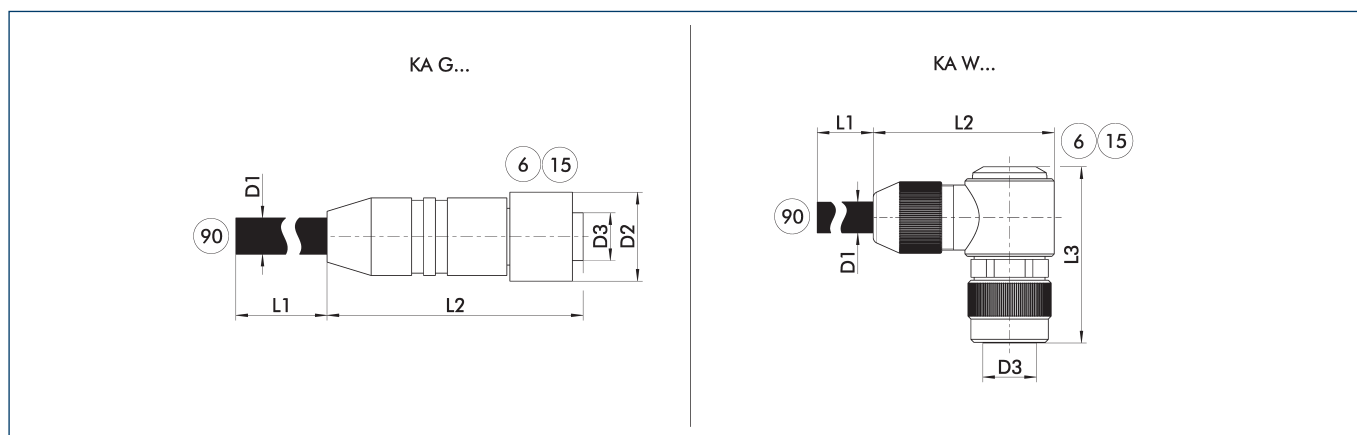
- ② Finger connection
- ⑦② Fit for centering sleeves

The drawing shows the finger blank which can be reworked by the customer.

Description	ID	Material	Scope of delivery
<b>Finger blank</b>			
ABR-PGZN-plus 160	0300014	Aluminum (3.4365)	1
SBR-PGZN-plus 160	0300024	Steel (1.7131)	1

① In the PGL-plus-P gripper series, the use of finger blanks results in a limitation of the closing stroke. Please check this in detail in advance using the CAD data and adjust the reworking of the fingers accordingly.

## Voltage supply connection cable



KA G... Connection cable with straight plug connector  
 KA W... Connection cable with angled plug connector

⑥ Connection module side  
 ⑮ Socket

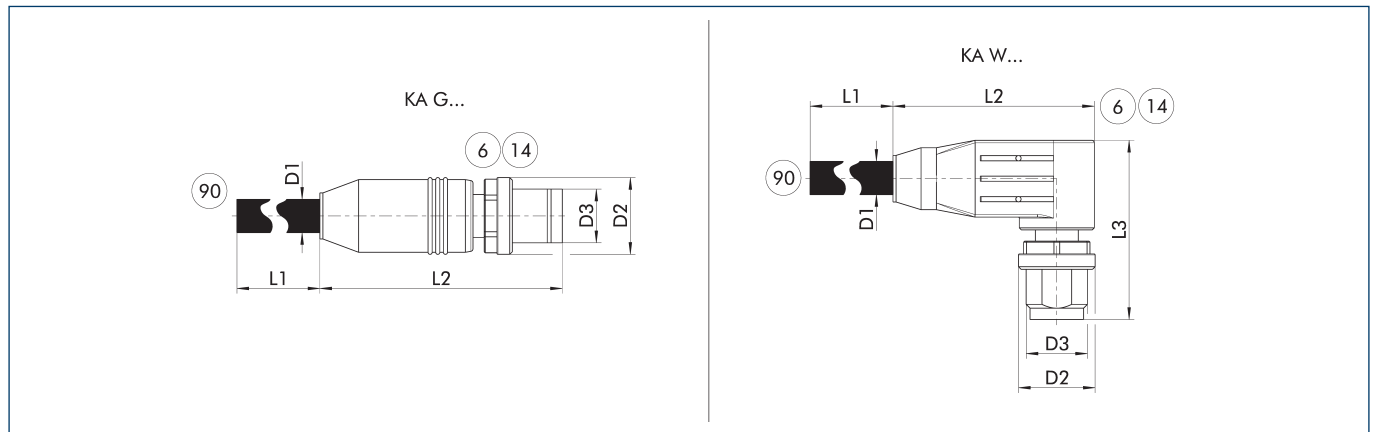
⑨⑩ Cable end with open wire strands

The connection cables are used to connect the SCHUNK product to the voltage supply.

Description	ID	L1	D1	L2	D2	L3	D3
		[m]	[mm]	[mm]	[mm]	[mm]	
Voltage supply connection cable – drag chain and torsion resistant M12 socket, straight							
KA GLN12L04-LK-00500-A	1502019	5	7.2	53.5	18		M12 L-coded
KA GLN12L04-LK-01000-A	1502023	10	7.2	53.5	18		M12 L-coded
Voltage supply connection cable – drag chain and torsion resistant M12 socket, angled							
KA WLN12L04-LK-00500-A	1502028	5	7.2	49	18	40	M12 L-coded
KA WLN12L04-LK-01000-A	1502032	10	7.2	49	18	40	M12 L-coded

① Please observe the min. bending radius for cable track-compatible cables or the max. torsion angle for torsion-compatible cables. These are generally 10 times the cable diameter or +/- 180°/m. Please refer to the product documentation for information about max. cable length and min. wire cross section.

### Connection cable communication PROFINET, EtherNet/IP and EtherCAT



KA G... Straight plug connector  
KA W... Angular plug connector

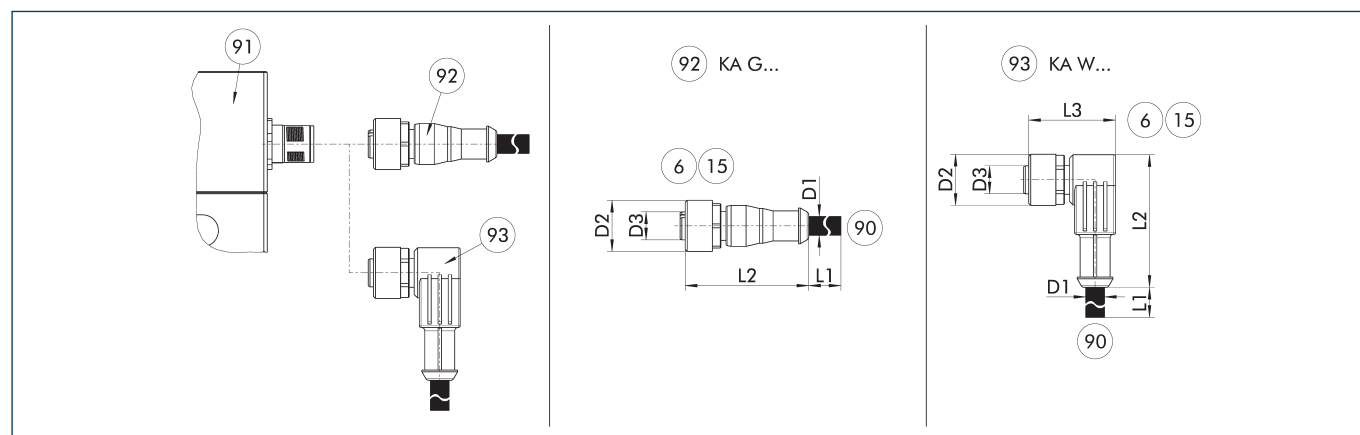
⑥ Connection module side  
⑭ Connector  
⑨⑩ Cable ends with second plug connector

The communication cables are suitably assembled for the mechatronic products from SCHUNK and can be used for the PROFINET, EtherNet/IP and EtherCAT communication interfaces. They always have an M12 plug connector on the module side (D-coded, connector). The plug connectors are designed straight (KA G...) or angled (KA W...) on the module side. On the second side, the cables either have a straight M12 plug connector (D-coded, connector) or an RJ45 plug connector.

Description	ID	L1	D1	L2	D2	L3	D3
		[m]	[mm]	[mm]	[mm]	[mm]	
EtherCAT connection cable star distributor M12 D-coded socket, straight; on M8 A-coded connector, straight							
KA GGN12D04-08A04-ET-00020-A	1521990	0.2	6.5	47.3	14.8		M12
Communication cable suitable for drag chain M12 connector, straight – to M12 connector, straight							
KA GGN12D04-12D04-ET-00500-A	1505114	5	6.5	47.3	14.8		M12
KA GGN12D04-12D04-ET-01000-A	1505119	10	6.5	47.3	14.8		M12
Communication cable suitable for drag chain M12 connector, straight – to RJ45 connector, straight							
KA GGN12D04-RJ45-ET-00200-A	1511256	2	6.5	47.3	14.8		M12
KA GGN12D04-RJ45-ET-00500-A	1354681	5	6.5	47.8	14.8		M12
KA GGN12D04-RJ45-ET-01000-A	1505143	10	6.5	47.3	14.8		M12
Communication cable suitable for drag chain M12 connector, angled – to M12 connector, straight							
KA WGN12D04-12D04-ET-00500-A	1354661	5	6.5	47.8	14.8		M12
KA WGN12D04-12D04-ET-01000-A	1505141	10	6.5	36.3	14.8	30	M12
Communication cable suitable for drag chain M12 connector, angled – to RJ45 connector, straight							
KA WGN12D04-RJ45-ET-00500-A	1354688	5	6.5	36.3	14.8	30	M12
KA WGN12D04-RJ45-ET-01000-A	1505142	10	6.5	36.3	14.8	30	M12
Communication cable suitable for torsion-resistant M12 connector, straight – to M12 connector, straight							
KAR GGN12D04-12D04-ET-00500-A	1505146	5	6.5	47.8	14.8		M12
KAR GGN12D04-12D04-ET-01000-A	1505147	10	6.5	47.3	14.8		M12
Communication cable suitable for drag chain-suitable M12 connector, straight – to RJ45 connector, straight							
KAR GGN12D04-RJ45-ET-00500-A	1354677	5	6.5	47.8	14.8		M12
KAR GGN12D04-RJ45-ET-01000-A	1505160	10	6.5	47.3	14.8		M12
Communication cable suitable for torsion-resistant M12 connector, angled – to M12 connector, straight							
KAR WGN12D04-12D04-ET-00500-A	1354674	5	6.5	47.8	14.8		M12
KAR WGN12D04-12D04-ET-01000-A	1505148	10	6.5	36.3	14.8	30	M12
Communication cable suitable for torsion-resistant M12 connector, angled – to RJ45 connector, straight							
KAR WGN12D04-RJ45-ET-00500-A	1354692	5	6.5	36.3	14.8	30	M12
KAR WGN12D04-RJ45-ET-01000-A	1505149	10	6.5	36.3	14.8	30	M12

① Please observe the min. bending radius for cable track-compatible cables or the max. torsion angle for torsion-compatible cables. These are generally 10 times the cable diameter or +/- 180°/m.

## Connection cable for voltage supply and communication IO-Link



KA G... Connection cable with straight socket  
KA W... Connection cable with angular socket

⑥ Connection module side  
⑮ Socket  
⑨⑩ SAC connection cable with open wire strands

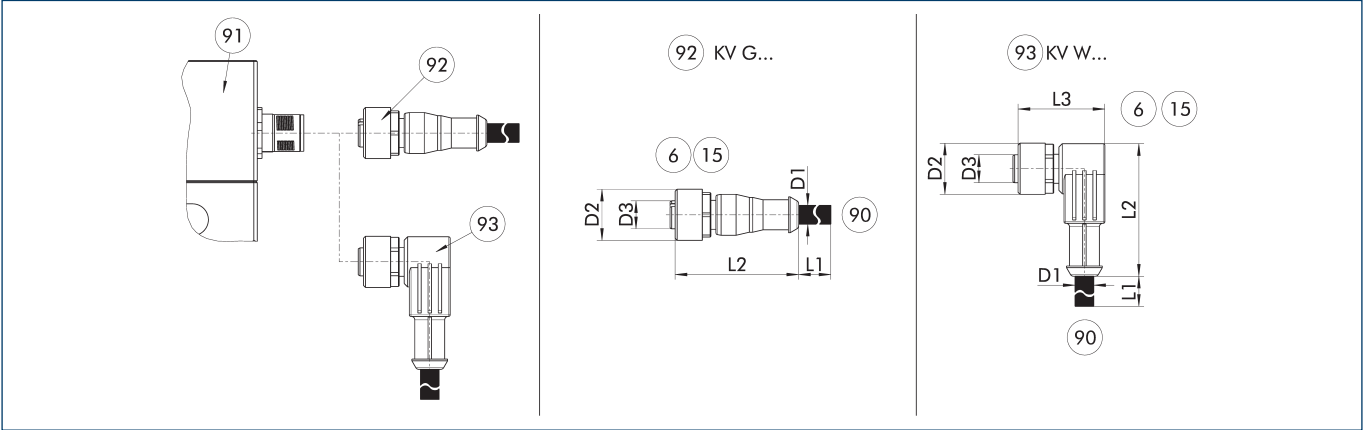
⑨① Connection plug component  
⑨② Cable with straight female connector  
⑨③ Cable with angled female connector

The connection cable is ideal for connecting the corresponding components to the control system. The connection cable has a 5-pin M12 socket on one side, and open wire strands on the other side for individual connections. The connection cables are suitable for use both in the cable track as well as in torsion applications.

Description	ID	L1 [m]	D1 [mm]	L2 [mm]	D2 [mm]	L3 [mm]	D3
IO-Link connection cable – drag chain and torsion-compatible							
KA GLN1205-IOL-00500-A	1387207	5	4.8	38	15		M12
KA GLN1205-IOL-01000-A	1387209	10	4.8	38	15		M12
KA WLN1205-IOL-00500-A	1387210	5	4.8	39	15	28	M12
KA WLN1205-IOL-01000-A	1387211	10	4.8	39	15	28	M12

① Please observe the min. bending radius for cable track-compatible cables or the max. torsion angle for torsion-compatible cables. These are generally 10 times the cable diameter or +/- 180°/m.

Cable extension for voltage supply and communication IO-Link



- KV G...

Cable extension with straight socket
- KV W...

Cable extension with angled socket
- 6

Connection module side
- 15

Socket
- 90

Cable end with straight connector
- 91

Connection plug component
- 92

Cable with straight female connector
- 93

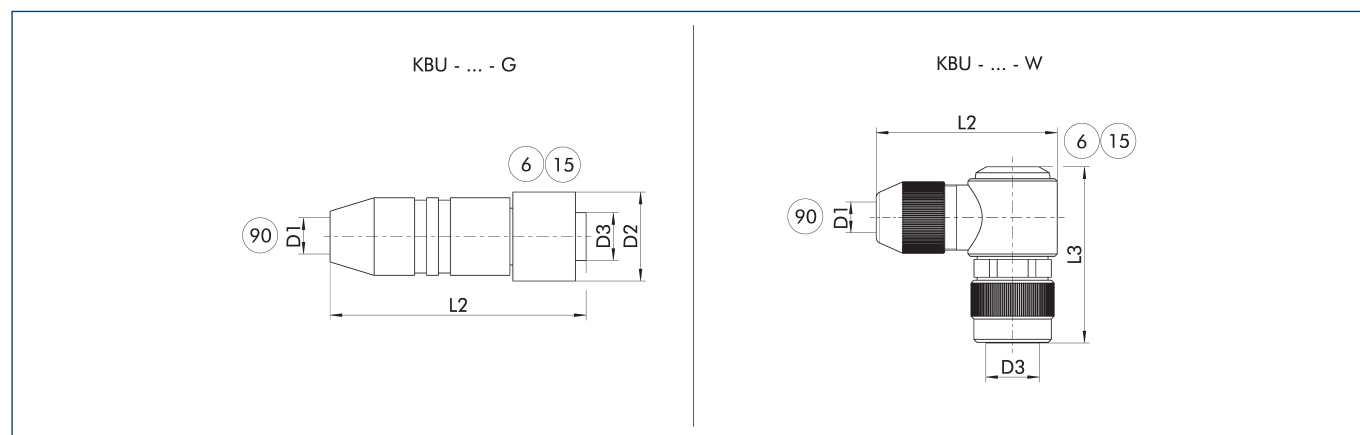
Cable with angled female connector

The cable extensions are ideal for connecting the relevant components to the control system, or for use as extension cables. The cable extensions have a 5-pin M12 connector with a straight or angled design on the module side and a 5-pin M12 plug with a straight design on the other side. The cable extensions are suitable for use in the cable track and in torsion applications.

Description	ID	L1	D1	L2	D2	L3	D3
		[m]	[mm]	[mm]	[mm]	[mm]	
IO-Link cable extension – cable track and torsion-compatible							
KV GGN1205-IOL-00200-A	1387195	2	4.8	41	15		M12
KV GGN1205-IOL-00500-A	1387199	5	4.8	41	15		M12
KV WGN1205-IOL-00200-A	1387202	2	4.8	39	15	28	M12
KV WGN1205-IOL-00500-A	1387205	5	4.8	39	15	28	M12

ⓘ Please observe the min. bending radius for cable track-compatible cables or the max. torsion angle for torsion-compatible cables. These are generally 10 times the cable diameter or +/- 180°/m.

## Power supply plug-in connector



KBU - ... - G Socket with straight outlet

KBU - ... - W Socket with angular outlet

⑥ Connection module side

⑮ Socket

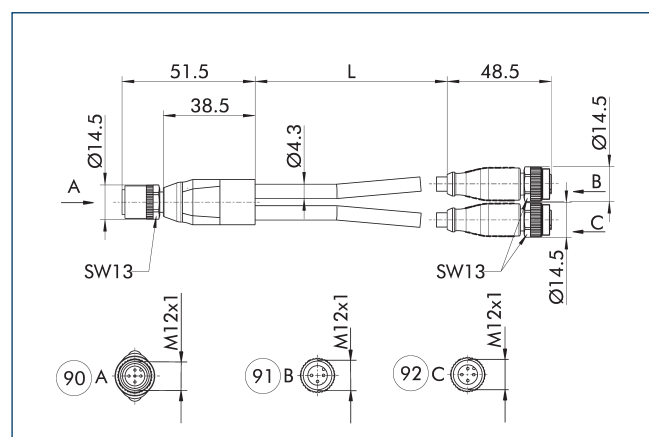
⑨① D1 – max. diameter connection cable

The plug connectors are used to connect the SCHUNK product to the voltage supply. A customer cable can be used for this. The individual wire strands are clamped using screw connections in the plug connector.

Description	ID	D1 (max.) [mm]	L2 [mm]	D2 [mm]	L3 [mm]	D3
Plug connector						
KBU-M12L-G	1502044	13	70	25		M12 L-coded
KBU-M12L-W 4P	1543957	13	49	25	99	M12 L-coded

① For the connection cable, a cross-section for each individual wire strand of 1.5 mm<sup>2</sup> is recommended. Please refer to the product documentation for information about max. cable length and min. wire cross section.

## Y-distributor for IO-Link for splitting logic and power supply



⑨① Grippers

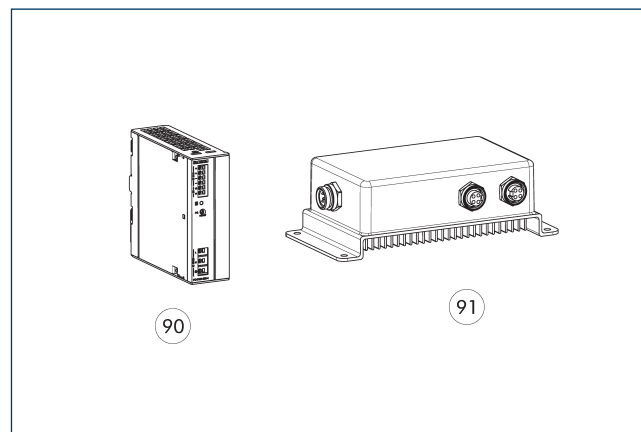
⑨① Logic (IO-Link master)

⑨② Power (24 V power supply unit)

The Y-distributor enables power to be supplied from a separate voltage source and is recommended when the current consumption of the product exceeds the current output of the IO-Link master. The logic supply and the IO-Link communication continue to run via the IO-Link master. IO-Link masters with port class A or port class B can be used.

Description	ID	Length [m]
Y-distributor, M12 socket, straight – on 2xM12 plugs, straight A-coded		
Y-Verteiler M12 5pol. auf 1x M12 3pol.	1523560	0.3

## Switched-mode power supply



⑨① 24 V power supply unit IP2

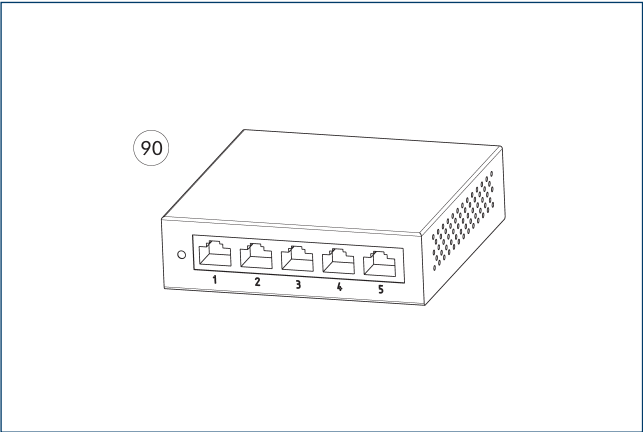
⑨② 24 V power supply unit IP67

The power supply with an output voltage of 24 V and an input voltage range of 100 V – 240 V are matched to the power supply of our SCHUNK products. Whether for mounting in the control cabinet on DIN rail in protection class IP20 or directly in the field in protection class IP67: the power supply units deliver voltage where it is needed. We will be happy to assist you with further selection.

Description	ID	
24 V power supply unit IP2		
BLOCK PC-0124-050-0	31001408	
24 V power supply unit IP67		
TURCK PSU67-12-2480/M	1524336	

① For the power supply IP67, there are customizable plug connectors for connection to the power supply unit included in the scope of delivery.

Switch



90 Ethernet 5-port switch

The switches enable easy expansion of a high-speed network using wired connections. With the switch, several SCHUNK products can be included in a network and thus controlled via a PLC, for example.

Description	ID	
Ethernet switch		
D-Link DGS-105 5-Port Ethernet Switch	1526496	







**SCHUNK GmbH & Co. KG**  
**Spann- und Greiftechnik**

Bahnhofstr. 106 - 134  
D-74348 Lauffen/Neckar  
Tel. +49-7133-103-0  
Fax +49-7133-103-2399  
[info@de.schunk.com](mailto:info@de.schunk.com)  
[schunk.com](http://schunk.com)

Folgen Sie uns | *Follow us*

