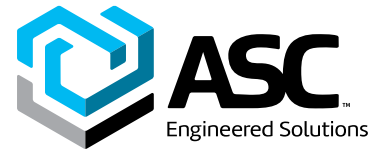


Building connections that last™



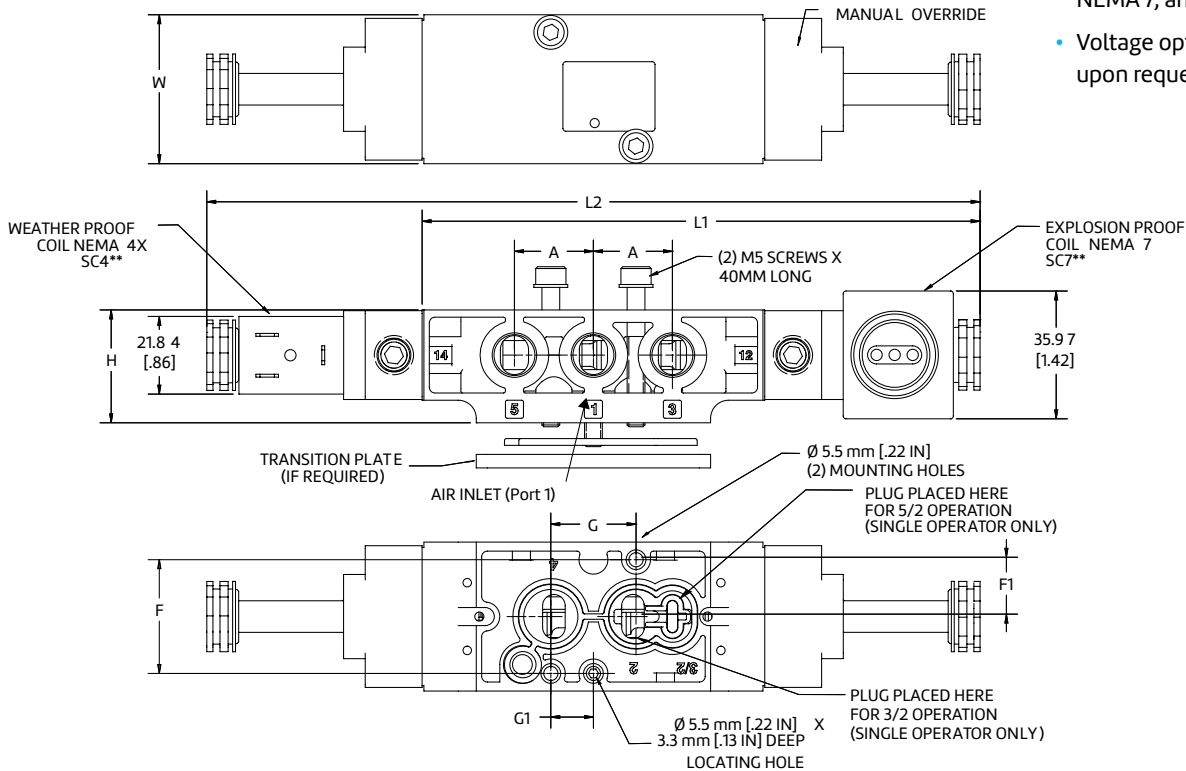
Sharpe® Series Solenoid Valves Datasheet



Sharpe® Series Solenoid Valves



- Aluminum body
- NBR seals
- Manual override
- High flow: 1.8 CV
- ½" conduit connection to coil
- ¼" port size
- Body can be converted between 5/2 (double acting) and 3/2 (spring return)
- Coils and flange tubes are rated to CSA/UL
- Same body accepts NEMA 4, NEMA 7, and ATEX coils
- Voltage options available upon request



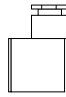
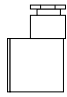
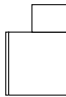
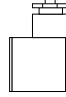
Dimensions

| Setup | Unit | A | C | F | F1 | G | G1 | H | L1 | L2 | W |
|--------|------|------|------|------|------|------|------|------|------|------|------|
| Single | in | 0.88 | 0.75 | 1.25 | 0.63 | 0.94 | 0.47 | 1.25 | 6.15 | - | 1.65 |
| | mm | 22.2 | 19.1 | 32.0 | 16.0 | 23.9 | 11.9 | 31.7 | 157 | - | 41.9 |
| Double | in | 0.88 | 0.75 | 1.26 | 0.63 | 0.94 | 0.47 | 1.25 | - | 8.55 | 1.65 |
| | mm | 22.2 | 19.1 | 32.0 | 16.0 | 23.9 | 11.9 | 31.7 | - | 217 | 41.9 |

Solenoids Electrical Information

Parts & Materials

Connectors (Not Polarity Dependent)

| | | | | | | |
|-----------------------------------|---|---|--|---|-------------------------|---------------|
| DIN 43650 Industrial Form B |  |  |  |  | | |
| | Maximum Cable Diameter: 9mm (0.35") | | | Strain Relief with Light & 6' Cord | | |
| Type | Strain Relief Without Cord | Strain Relief with Light | | ½" Conduit without Cord | 100–240 AC 48–120 DC | 6–48 AC/DC |
| Part Number | SR7020-001 | SRL7020-AA | SRL7020-DB | DIN PLUG | SRLC-7094-006 | SRLC-7094-007 |

Coil Parts Numbers

| Coil Part Number ** = Voltage | Description | Operator Type | Instructions | Lb. |
|---|---|---------------|---|------|
| SC4* | Weather-Proof DIN 43650 Industrial Form B Connection NEMA 4X | W | Order coil separately (specify voltage code from below) | 0.12 |
| SC4**C SC4**CT (High Temp 82°C Max) | Weather-Proof ½" Conduit with 30" Leads NEMA 4X | W | Order coil separately (specify voltage code from below) | 0.12 |
| SC7** | Explosion-Proof ½" Conduit with 24" Leads CSA & FM Approved CL. I; Zone1 Ex m II T4; AEx m II CL. I; Div.1; GR. A, B, C, D CL. II; GR. E, F, G CL. III T4 Ta=-20°C to +60°C NEMA 4, 4X, 7C, 7D, 9 | W | Order coil separately (specify voltage code from below) | 0.44 |
| SCI2D | Intrinsically-Safe Strain Relief Ex ia CL. I; GR. A,B,C,D CL. II; GR.E,F,G CL. III; Div.1; T5 | V | Coil and Connector included with valve (24VDC only) | 0.46 |

Note:
SCI2D Must be used with an Intrinsically-Safe Barrier.

Solenoids Electrical Information

Voltage Codes Lower Wattage Available, Upon Request

| **Code | Operator Type | Current (Amps) | | | | | | Resistance (OHMS @ 25°C) | | | Power (AC=VA, DC=Watts) | | | | | | |
|----------------|---------------|----------------|------|-------|---------|-------|------|--------------------------|------|-------|-------------------------|-------|------|-----|-----|-----|-----|
| | | Inrush | | | Holding | | | W | V | Z | W | V | Z | | | | |
| | | W | V | Z | W | V | Z | | | | | | | | | | |
| | | NEMA | | ATEX | | NEMA | | ATEX | | NEMA | | ATEX | | | | | |
| Voltage% +/-10 | | 4, 4x | 7, 9 | Ex ia | Ex m | 4, 4x | 7, 9 | Ex ia | Ex m | 4, 4x | 7, 9 | Ex ia | Ex m | | | | |
| 2A | 22/50 | | | | | | | | | | | | | | | | |
| | 24/60 | .36 | - | - | - | .24 | - | - | - | 32 | - | - | - | 6.9 | - | - | - |
| 12 | 120/50 | | | | | | | | | | | | | | | | |
| | 120/60 | .08 | .10 | - | .04 | .05 | .05 | - | .03 | 840 | 530 | - | 1164 | 6.9 | 6.5 | - | 3.4 |
| 22 | 230/50 | | | | | | | | | | | | | | | | |
| | 230/60 | .04 | .05 | - | 0.2 | .03 | .03 | - | .01 | 3310 | 2345 | - | 6730 | 6.4 | 6.8 | - | 3.3 |
| 1D | 12 VDC | .38 | .38 | - | .27 | .38 | .38 | - | .27 | 32 | 32 | - | 45 | 4.8 | 4.5 | - | 3.5 |
| 2D | 24 VDC | .20 | .19 | .05 | .14 | .20 | .19 | .05 | .14 | 121 | 128 | 275 | 177 | 4.8 | 4.5 | 1.6 | 3.5 |

Fig: X2003AAWR-1-2D

Description: Coil Right - Intrinsically Safe - 24 VCD

Solenoids Part Number Chart

| Body | | NEMA Class | | Voltage | |
|-----------|---|------------|----------------------------------|---------|---------|
| S2003ACWR | COIL LEFT FOR SPNII AND OTHER ACTUATORS THAT REQUIRE AIR TO COME IN ON THE LEFT IN SPRING RETURN MODE | 4 | NEMA 4X | 12 | 120 VAC |
| X2003AAWR | COIL RIGHT FOR X AND OTHER ACTUATORS THAT REQUIRE AIR TO COME IN ON THE RIGHT IN SPRING RETURN MODE | 7 | NEMA 7/9 | 22 | 240 VAC |
| | | 1 | INTRINSICALLY SAFE - 24 VDC ONLY | 2A | 24 VAC |
| | | | | 1D | 12 VDC |
| | | | | 2D | 24 VDC |

About ASC Engineered Solutions

ASC Engineered Solutions is defined by quality—in its products, services and support. With more than 1,400 employees, the company's portfolio of precision-engineered piping support, valves and connections provides products to more than 4,000 customers across industries, such as mechanical, industrial, fire protection, oil and gas, and commercial and residential construction. Its portfolio of leading brands includes ABZ Valve®, AFCON®, Anvil®, Anvil EPS, Anvil Services, Basic-PSA, Beck®, Catawissa, Cooplet®, FlexHead®, FPPI®, Gruvlok®, J.B. Smith, Merit®, North Alabama Pipe, Quadrant®, SCI®, Sharpe®, SlideLOK®, SPF® and SprinkFLEX®. With headquarters in Commerce, CA, and Exeter, NH, ASC also has ISO 9001:2015 certified production facilities in PA, TN, IL, TX, AL, LA, KS, and RI.



asc-es.com

Building connections that last™

FC-DS-Series-Solenoids-Valves-v02 20220112

