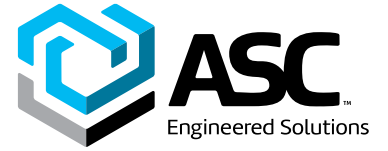


Building connections that last™



Sharpe® Series 58B

One-Piece Uni-Body Ball Valve

Datasheet



One-Piece Uni-Body Ball Valve Sharpe® Series 58B



Design Features

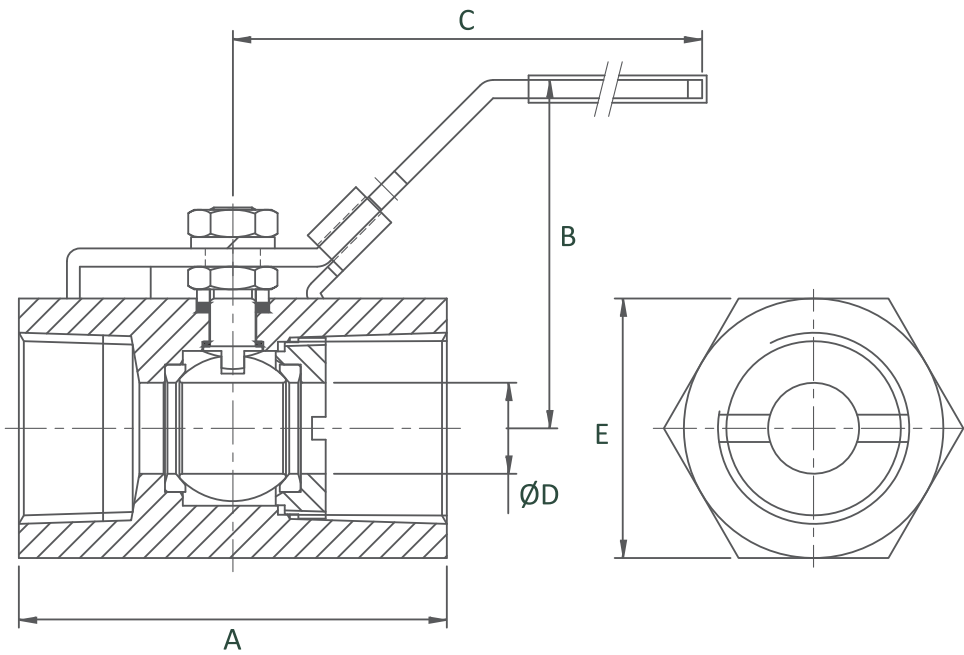
- Reduced Port
- 2000 CWP
- Carbon Steel ASTM A108
- Threaded End Connections
- Blow-Out Proof Stem
- Lockable Lever Handle

Applicable Standards

- NACE MR-1075-(2002)
- Threaded Ends ASME B16.11



One-Piece Uni-Body Ball Valve
Sharpe® Series 58B

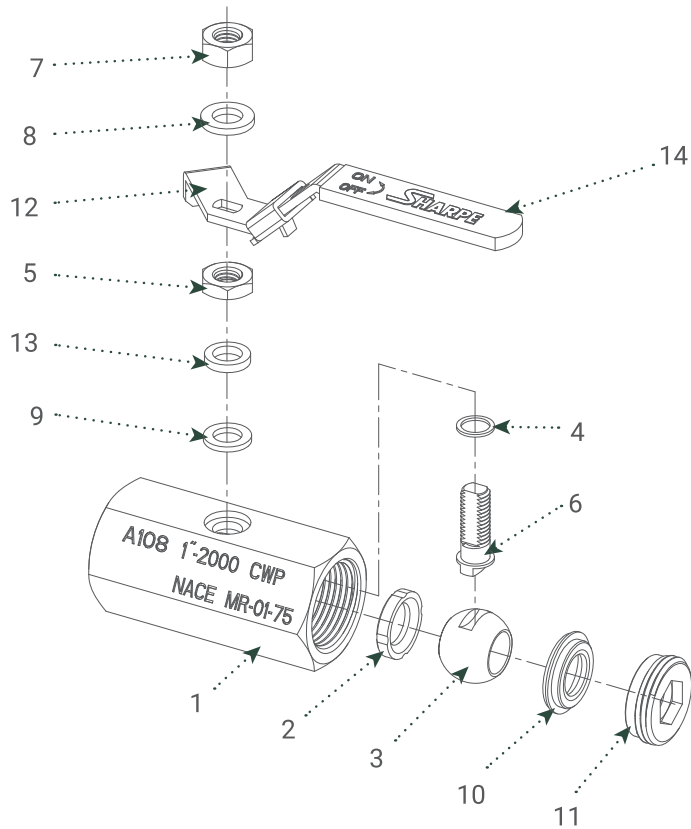


Dimensions (Inches)

Size	A	B	C	Ø D	E
1/4	1.73	1.24	2.76	0.20	0.75
3/8	1.89	1.28	3.15	0.28	0.83
1/2	2.44	2.22	4.13	0.35	1.14
3/4	2.76	2.34	4.13	0.49	1.38
1	3.39	2.17	4.45	0.59	1.61
1-1/4	3.70	2.99	5.71	0.79	2.24
1-1/2	4.02	3.07	5.71	0.98	2.24
2	4.49	3.27	7.09	1.26	2.89

One-Piece Uni-Body Ball Valve

Sharpe® Series 58B



Parts & Materials

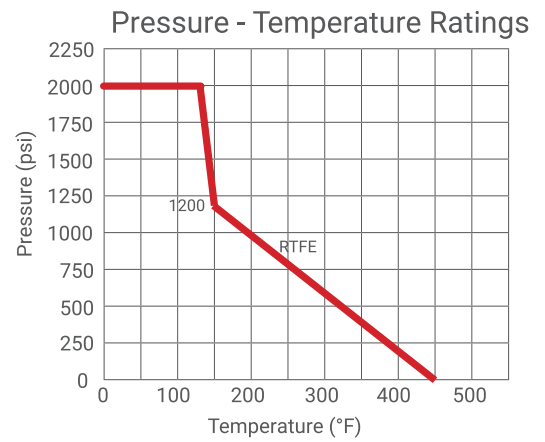
No.	Part Name	Qty.	Material
1	Body	1	Carbon Steel ASTM A108
2	Seat	1	RTFE
3	Ball	1	304 Stainless Steel
4	Thrust Washer	1	PTFE
5	Packing Nut	1	300 Series Stainless Steel
6	Stem	1	304 Stainless Steel
7	Handle Nut	1	Zinc Plated Steel
8	Handle Washer	1	Zinc Plated Steel
9	Stem Packing	1	PTFE
10	Seat	1	RTFE
11	Retainer	1	Carbon Steel ASTM A108
12	Handle	1	Zinc Plated Steel
13	Gland Packing	1	304 Stainless Steel
14	Handle Sleeve	1	PVC

One-Piece Uni-Body Ball Valve Sharpe® Series 58B



Technical Information

Size	C _v	Weight (lbs.)
1/4	2	0.2
3/8	2.5	0.3
1/2	5	0.7
3/4	10	1.0
1	15	1.5
1-1/4	30	3.4
1-1/2	50	3.2
2	70	5.9



One-Piece Uni-Body Ball Valve
Sharpe® Series 58B



How to order Series 58B

Example

1/4 **58B74** = **1/4"** - **58B74**

Size

Series

Size	Series
1/4	58B74
3/8	
1/2	
3/4	
1	
1-1/4	
1-1/2	
2	

Note:

Due to continuous development of our product range, we reserve the right to change the dimensions and information for this product as required.

About ASC Engineered Solutions

ASC Engineered Solutions is defined by quality—in its products, services and support. With more than 1,400 employees, the company's portfolio of precision-engineered piping support, valves and connections provides products to more than 4,000 customers across industries, such as mechanical, industrial, fire protection, oil and gas, and commercial and residential construction. Its portfolio of leading brands includes ABZ Valve®, AFCON®, Anvil®, Anvil EPS, Anvil Services, Basic-PSA, Beck®, Catawissa, Cooplet®, FlexHead®, FPPI®, Gruklok®, J.B. Smith, Merit®, North Alabama Pipe, Quadrant®, SCI®, Sharpe®, SlideLOK®, SPF® and SprinkFLEX®. With headquarters in Commerce, CA, and Exeter, NH, ASC also has ISO 9001:2015 certified production facilities in PA, TN, IL, TX, AL, LA, KS, and RI.



asc-es.com

Building connections that last™

FC-DS-SERIES 58B--v01 20210917

