

Building connections that last™



Sharpe® Series 60

Class 2500 Ball Valve Datasheet



Design & Features:

Body Material

316 Stainless & Carbon Steel

Three-Piece Design

In-line serviceable swing-out center section allows easy access to internal valve components without disturbing alignment of pipe.

Stem Design

Live-loaded, bottom entry, blowout proof, anti-static stem featuring packing that extends valve cycle life over conventional ball valves and is best choice for actuation.

Stem seals are live-loaded using Belleville springs to provide consistent sealing forces, reducing or eliminating the need for frequent seal adjustment. High-strength 17-4PH stainless steel as standard material.

Tongue and Groove Design

Fully encapsulated body seals, allowing ends to be welded in-line, without time consuming and labor intensive disassembly.

Design compensates for bolt expansion and reduces the chance of external leakage.

Helps prevent seal ruptures in high pressure, cryogenic or steam applications.

Floating Ball Design

Precision engineered and machined solid stainless steel ball with relief hole in the stem slot prevents build-up of cavity pressure while the valve is open.

Slotted Seat Design

Relief slots help equalize body pressure, and assure leak-tight sealing. Seats also provide a wiping action that cleans ball and seats each time valve is cycled.

Choice of Seats and Seals

A choice of seat material is available for the most demanding applications.

Integral Mounting Pad

Permits easy field conversion from manual operation to power actuation.

Lockable Handle

All Sharpe® Series 60 valves are supplied with lever or pipe handles and are designed to permit locking the valve in either the open or closed position.

Traceability

Body and end piece castings are marked with heat codes providing traceability to the chemical analysis and material test reports performed at the foundry. CMTR's (Certified Material Test Reports) are available upon request.



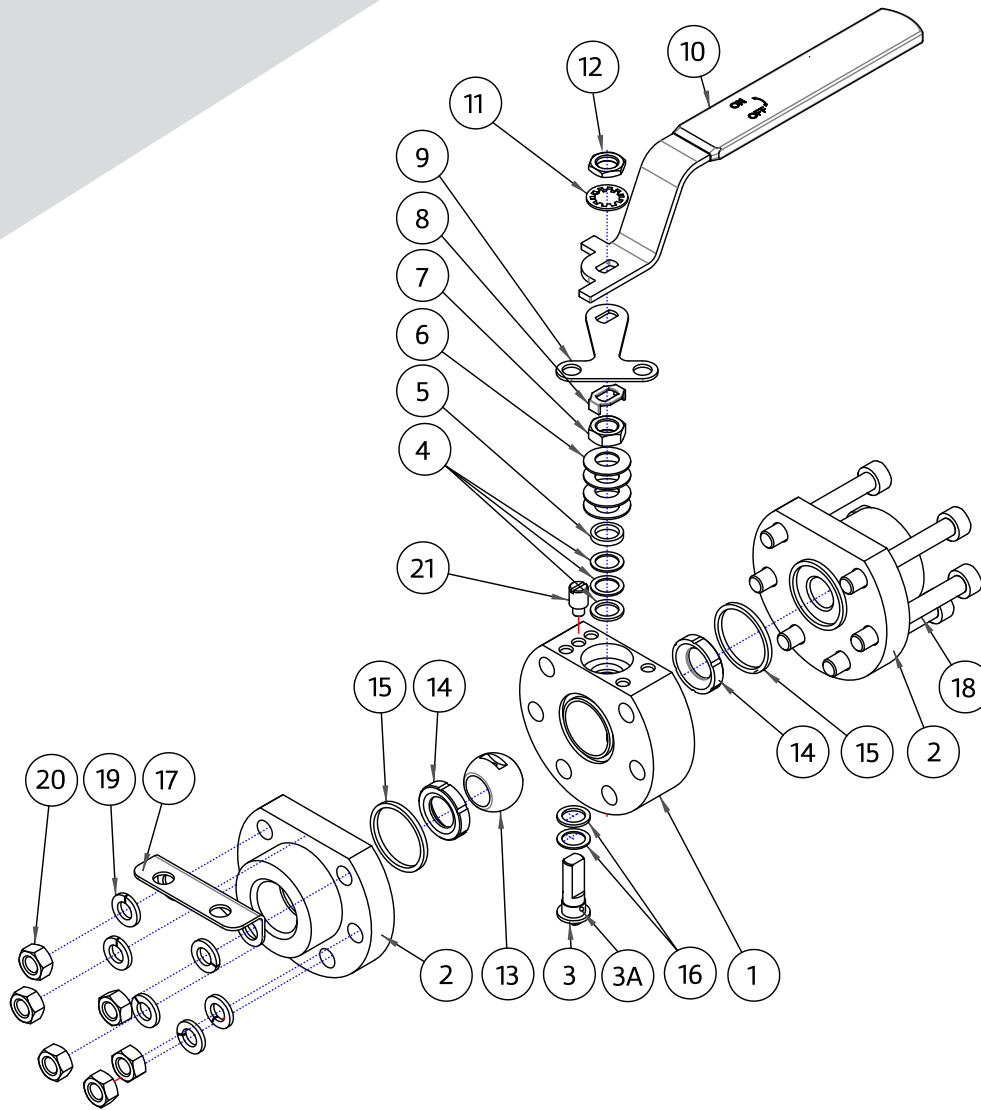
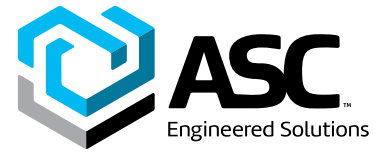
asc-es.com

Building connections that last™



SHARPE
An ASC Engineered Solution

Class 2500 Ball Valve Sharpe® Series 60



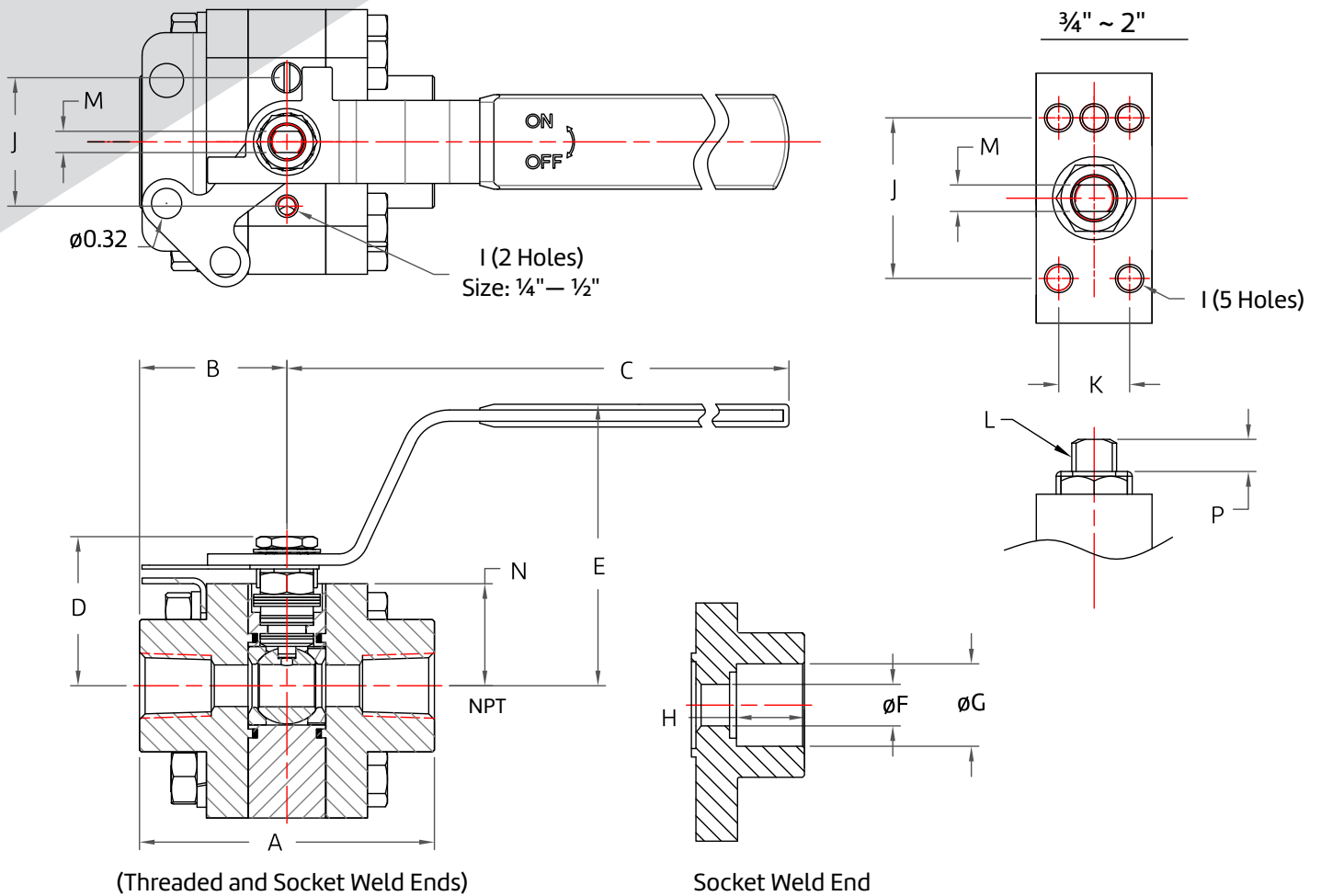
Parts & Materials

No.	Part Name	Qty	Material
1	Body	1	316 Stainless Steel ASTM A351 CF8M, Carbon Steel ASTM A216 WCB
2	End Piece	2	316 Stainless Steel ASTM A351 CF8M, Carbon Steel ASTM A216 WCB
3	Stem	1	17-4PH Stainless Steel
3A	Anti-Static Device	1	316 Stainless Steel
4	Stem Packing	3/1	Nova / Graphite
5	Gland	1	300 Series Stainless Steel
6	Belleville Washer	4	300 Series Stainless Steel
7	Packing Nut	1	300 Series Stainless Steel
8	Lock Tab	1	300 Series Stainless Steel
9	Upper Locking Device	1	300 Series Stainless Steel
10	Handle	1	300 Series Stainless Steel

No.	Part Name	Qty	Material
11	Lock Washer	1	300 Series Stainless Steel
12	Handle Nut	1	300 Series Stainless Steel
13	Ball	1	316 Stainless Steel
14	Seat	2	Delrin®, Peek
15	Body Seal	2	Graphite, Viton®, PTFE
16	Thrust Bearings	2	Nova / PEEK
17	Lower Locking Device	1	300 Series Stainless Steel
18	Body Bolts	6/8*	ASTM A193 Gr B8 / A2-70 Stainless Steel Class 2
19	Body Washers	6/8*	304 Stainless Steel
20	Body Nuts	6/8*	300 Series Stainless Steel
21	Stop Pin	1	300 Series Stainless Steel

Note:
* 1-½" & 2" Sizes.

Class 2500 Ball Valve
Sharpe® Series 60

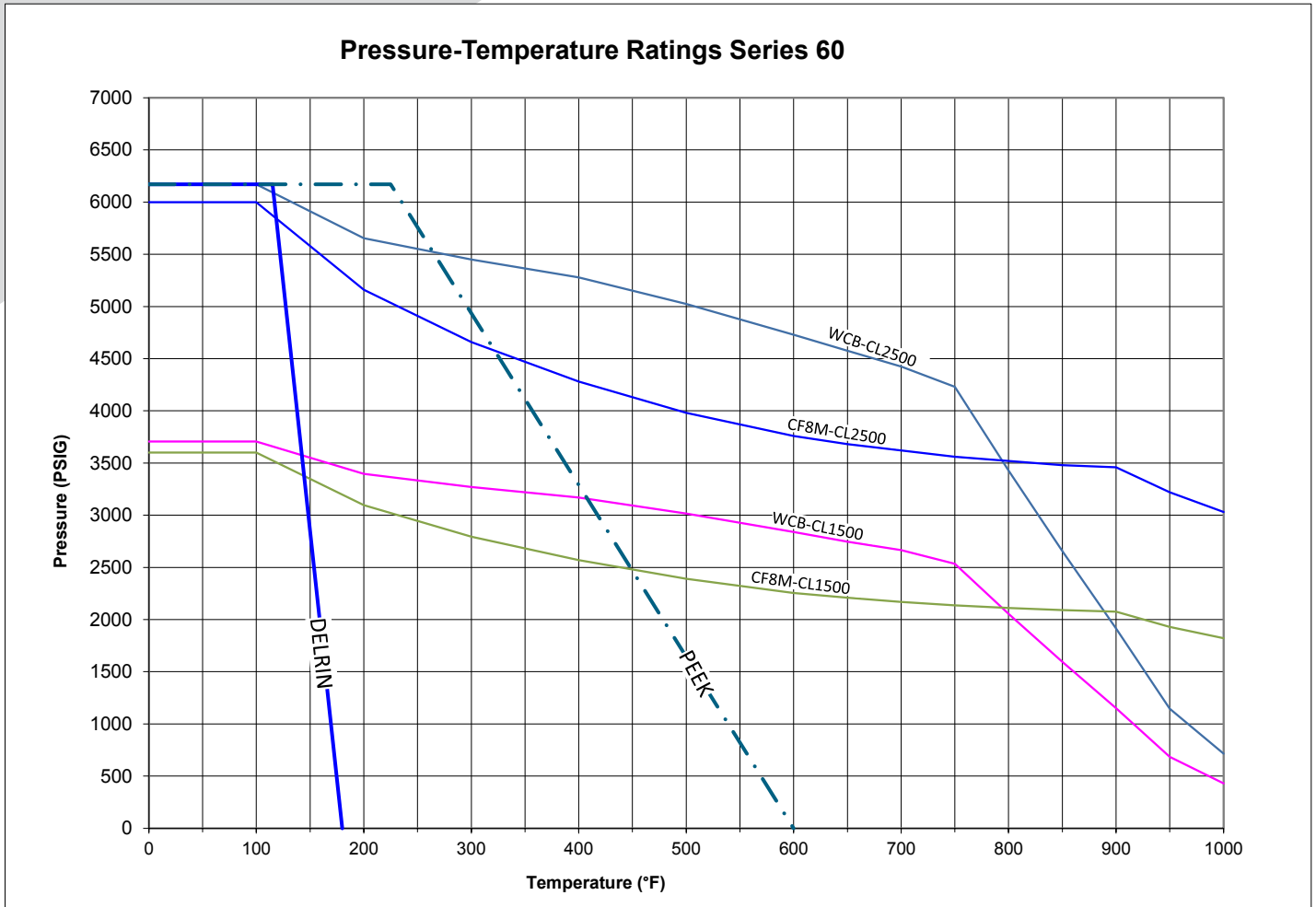


Dimensions (Inches)

Size	A	B	C	D	E	F	G	H	I	J	K	L	M	N	P
1/4	3.00	1.50	7.11	1.55	2.93	0.43	0.56	0.75	M5x.8	1.34	-	3/8-24 UNF	0.220	1.06	0.37
3/8	3.09	1.54	7.11	1.55	2.93	0.43	0.69	0.75	M5x.8	1.34	-	3/8-24 UNF	0.220	1.06	0.37
1/2	3.09	1.54	7.11	1.55	2.93	0.43	0.86	0.71	M5x.8	1.34	-	3/8-24 UNF	0.220	1.06	0.37
3/4	3.49	1.74	7.11	1.68	3.06	0.56	1.07	0.63	M5x.8	1.34	0.59	3/8-24 UNF	0.220	1.18	0.38
1	4.00	2.00	7.70	2.16	2.48	0.81	1.33	0.98	M5x.8	1.65	0.94	7/16-20 UNF	0.295	1.50	0.57
1-1/2	5.07	2.54	11.53	2.89	3.15	1.25	1.91	0.94	M6x1.0	1.57	1.42	9/16-18 UNF	0.342	1.97	0.53
2	6.14	3.07	11.53	3.08	3.29	1.50	2.41	1.06	M6x1.0	1.97	1.57	9/16-18 UNF	0.342	2.17	0.54

Note:

The dimensions above are for informational purpose only. Please refer to Sharpe® Valves if you need dimensions for construction.



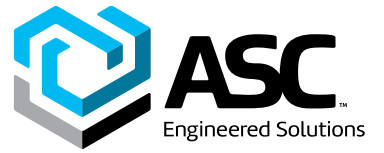
Note:

*Ratings are for the valve body, specific ends may cause the ratings to change.

Technical Information

Size	C _v	Approx. Weight Lbs.
¼	5	3.55
⅜	8	3.55
½	23	3.50
¾	61	5.30
1	73	9.90
1-½	82	21.00
2	150	29.00

Class 2500 Ball Valve
Sharpe® Series 60



How to order Series 60

Fig: 1-½ - 60 - 4 - 6 - D - T - TE
 Size Series Body & Ends Trim Seat Seal Ends

Size	Series	Trim	Ends
¼	60	17-4 PH Stainless Steel	TE Threaded
⅜	Body & Ends	6 Stem & 316 Stainless Steel Ball	SW Socket Weld
½			BW Butt-weld (Sch 160)*
¾	4 Carbon Steel	Seat	1 ANSI CL1500 RF Flange*
1	6 Stainless Steel	D Delrin	1J ANSI CL 1500 RTJ Flange*
1-½		P Peek	2 ANSI CL2500 RF Flange*
2		Seal	2J ANSI CL2500 RTJ Flange*
		G Graphite	
		V Viton®	

Note:

*POA

Viton® is a registered trademark of E.I. Dupont.

Delrin® is a registered trademark of E.I. Dupont.



asc-es.com

Building connections that last™

About ASC Engineered Solutions

ASC Engineered Solutions is defined by quality—in its products, services and support. With more than 1,400 employees, the company's portfolio of precision-engineered piping support, valves and connections provides products to more than 4,000 customers across industries, such as mechanical, industrial, fire protection, oil and gas, and commercial and residential construction. Its portfolio of leading brands includes ABZ Valve®, AFCON®, Anvil®, Anvil EPS, Anvil Services, Basic-PSA, Beck®, Catawissa, Cooplet®, FlexHead®, FPPI®, Gruvlok®, J.B. Smith, Merit®, North Alabama Pipe, Quadrant®, SCI®, Sharpe®, SlideLOK®, SPF® and SprinkFLEX®. With headquarters in Commerce, CA, and Exeter, NH, ASC also has ISO 9001:2015 certified production facilities in PA, TN, IL, TX, AL, LA, KS, and RI.



asc-es.com

Building connections that last™

FC-DS-SERIES-60-v01 20210927

