

Building connections that last™



Sharpe® Series 12 DIR-ACT

Direct Mount Two-Piece
Ball Valve Datasheet



Direct Mount Two-Piece Ball Valve Sharpe® Series 12 DIR-ACT



Design Features

- Low Profile, Space Saving, Actuated Ball Valve
- Innovative Stem Packing System
- Quick, efficient stem packing adjustments with the actuator installed and the pipeline pressurized
- Full Port
- 1500 PSI CWP**, 150 WSP*
- Carbon Steel ASTM A216 WCB or 316 Stainless Steel ASTM A351 CF8M
- Threaded End Connections
- Direct Mount Pad Eliminates Need for Brackets and Couplings*
- Live Loaded, Blow-Out Proof, Stem
- Lockable, Reversible, Lever Handle

Technical Information

Size	C _v	Break Away* Torque / (in-lbf)	Weight (Lbs.)
¼	8	50	1.6
⅜	8	50	1.6
½	38	50	1.4
¾	71	100	1.6
1	110	140	3.2
1-¼	230	200	4.6
1-½	350	240	6.0
2	600	320	9.0

*Based on clean non-lubricating fluid at room temperature at 1500 psi media pressure.

Applicable Standards

- Mounting Dimensions: ISO 5211
- Threaded Ends: ASME B16.11
- Shell and Seat Pressure Test: ASME B16.34

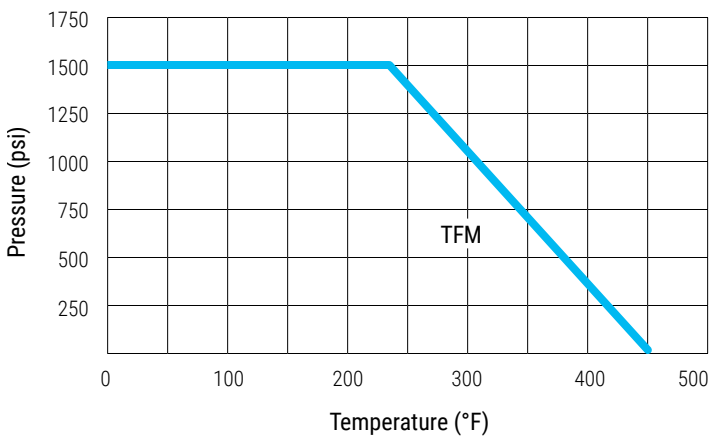
Options

- 4X4 Pneumatic, Four Piston Actuator
- SPN II Pneumatic, Rack & Pinion
- SEA Electric Actuator
- Solenoids
- Limit Switches

Notes:

- *Mounting Bracket Must be Used for High Temperature (>180 F) and Steam Applications
- ** Valve is rated to 1500 PSI CWP, which is the rating of the seat material. The body is rated & marked 2000 PSI CWP.

Pressure - Temperature Ratings



asc-es.com

Building connections that last™

Direct Mount Two-Piece Ball Valve Sharpe® Series 12 DIR-ACT



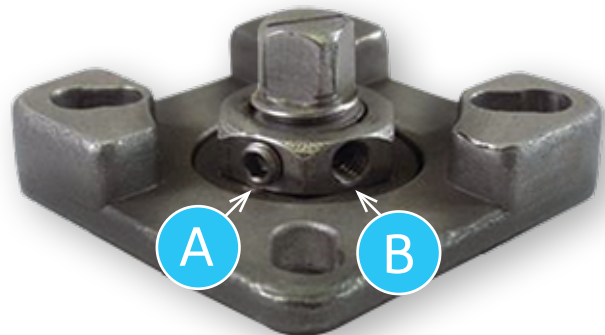
Easy Maintenance of Actuated Valves

- Innovative Stem Packing System
- Quick, in line adjustments
- Line does not need to be depressurized
- Removal of actuator not required

Easy as 1, 2, 3

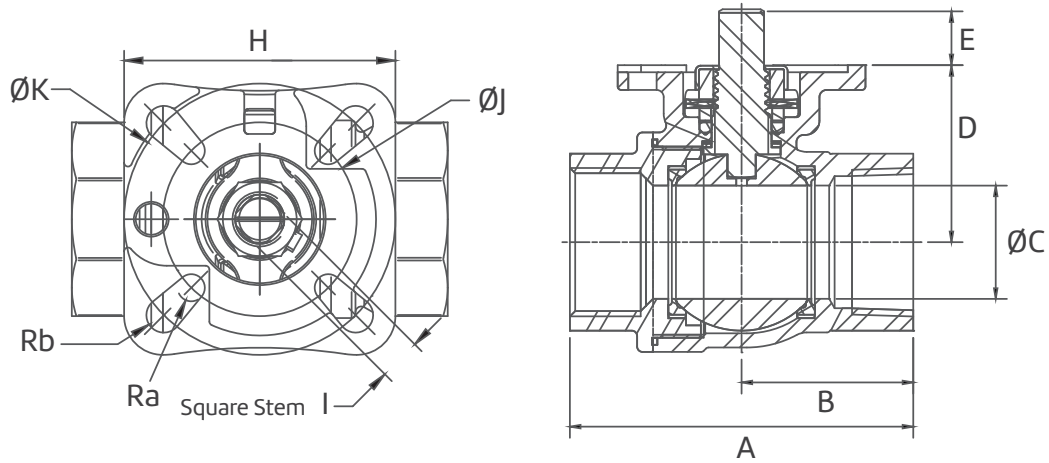
With the actuator installed:

- 1 Loosen the stem nut's set screw ("A") with an allen wrench.
- 2 Insert the allen wrench in an empty hole in the stem nut ("B") and rotate the stem nut clockwise to tighten. See IOM.
- 3 Retighten the stem nut's set screw ("A") with an allen wrench.



Note: Removal of the actuator is not required.
Actuator has been removed to show
mounting pad and stem nut.

Direct Mount Two-Piece Ball Valve Sharpe® Series 12 DIR-ACT



Dimensions (Inches)

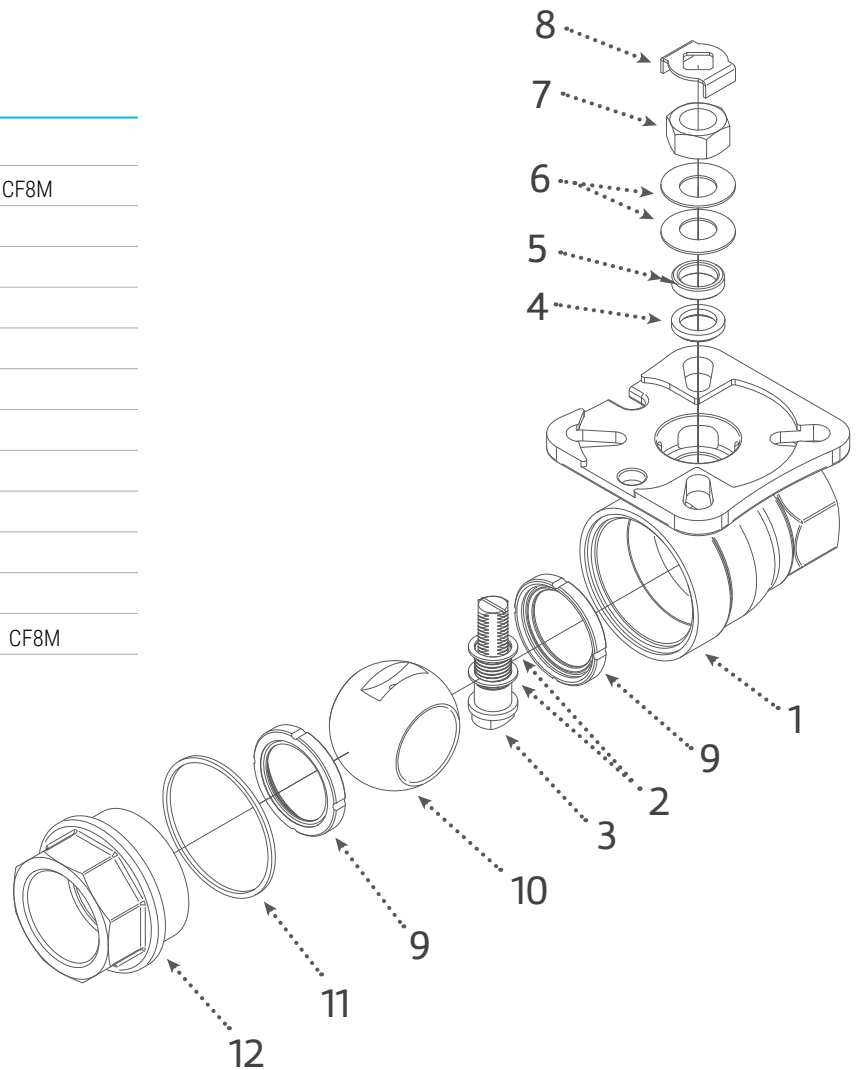
Item	A	B	ØC	D	E	H	I	ØJ	ØK	Ra	Rb
¼	2.34	1.17	0.25	1.38	0.40	1.97	0.354	F03 (1.42)*	F05 (1.97)	0.11	0.13
⅜	2.34	1.17	0.50	1.38	0.40	1.97	0.354	F03 (1.42)*	F05 (1.97)	0.11	0.13
½	2.34	1.17	0.59	1.38	0.40	1.97	0.354	F03 (1.42)*	F05 (1.97)	0.11	0.13
¾	2.91	1.40	0.79	1.48	0.46	1.97	0.354	F03 (1.42)*	F05 (1.97)	0.11	0.13
1	3.31	1.57	1.00	1.69	0.56	2.76	0.354	F05 (1.97)	F07 (2.76)	0.14	0.18
1¼	3.82	1.88	1.26	1.97	0.61	2.76	0.433	F05 (1.97)	F07 (2.76)	0.14	0.18
1½	4.33	2.17	1.50	2.21	0.61	2.76	0.433	F05 (1.97)	F07 (2.76)	0.14	0.18
2	5.28	2.64	2.00	2.50	0.63	2.76	0.433	F05 (1.97)	F07 (2.76)	0.14	0.18

Note: *Bolt slots accept F03, F04 and F05

Direct Mount Two-Piece Ball Valve Sharpe® Series 12 DIR-ACT

Parts & Materials

No.	Part Name	Qty.	Materials
1	Body	1	316 Stainless Steel, ASTM A351 CF8M
2	Thrust Bearing	2	PTFE
3	Stem	1	316 Stainless Steel
4	Stem Seal	1	PTFE
5	Gland Packing	1	300 Series Stainless Steel
6	Belleville Washer	2	300 Series Stainless Steel
7	Packing Nut	1	300 Series Stainless Steel
8	Lock Tab	1	300 Series Stainless Steel
9	Seat	2	TFM
10	Ball	1	316 Stainless Steel
11	Body Seal	1	PTFE
12	End Piece	1	316 Stainless Steel, ASTM A351 CF8M



Direct Mount Two-Piece Ball Valve Sharpe® Series 12 DIR-ACT



How to order Series 12

Example:

1/4	12	-	6	-	6	-	TE	-	M
Size	Series		Body		Ball & Stem		End Connection		Seat
1/4	12		316 Stainless Steel		6 316 Stainless Steel		TE Threaded		M TFM
3/8			6 Stainless Steel		6 316 Stainless Steel				
1/2			4 Carbon Steel						
3/4									
1									
1-1/4									
1-1/2									
2									

Note:

Responsibility for proper selection, use and maintenance of any product remains solely with the purchaser and end user. We reserve the right to modify or improve the designs or specifications of any product at any time without notice. 3M™, Dyneon™, and TFM™ are trademarks owned by 3M.

About ASC Engineered Solutions

ASC Engineered Solutions is defined by quality—in its products, services and support. With more than 1,400 employees, the company's portfolio of precision-engineered piping support, valves and connections provides products to more than 4,000 customers across industries, such as mechanical, industrial, fire protection, oil and gas, and commercial and residential construction. Its portfolio of leading brands includes ABZ Valve®, AFCON®, Anvil®, Anvil EPS, Anvil Services, Basic-PSA, Beck®, Catawissa, Cooplet®, FlexHead®, FPPI®, Golvlok®, J.B. Smith, Merit®, North Alabama Pipe, Quadrant®, SCI®, Sharpe®, SlideLOK®, SPF® and SprinkFLEX®. With headquarters in Commerce, CA, and Exeter, NH, ASC also has ISO 9001:2015 certified production facilities in PA, TN, IL, TX, AL, LA, KS, and RI.



asc-es.com

Building connections that last™

FC-DS-SERIES-12-v03 20221215

