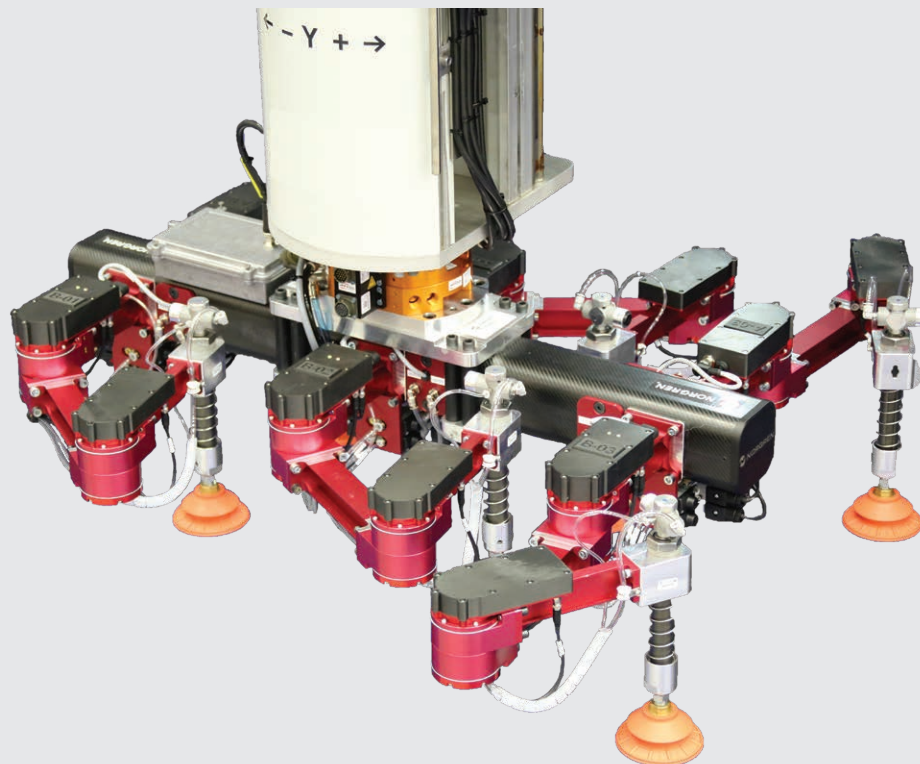


# Transforming Tooling

Adaptable fully  
programmable  
tooling



# CONTENTS

**Breakthrough Engineering**

**03**

**Benefits**

**04**

**Engineered Solution**

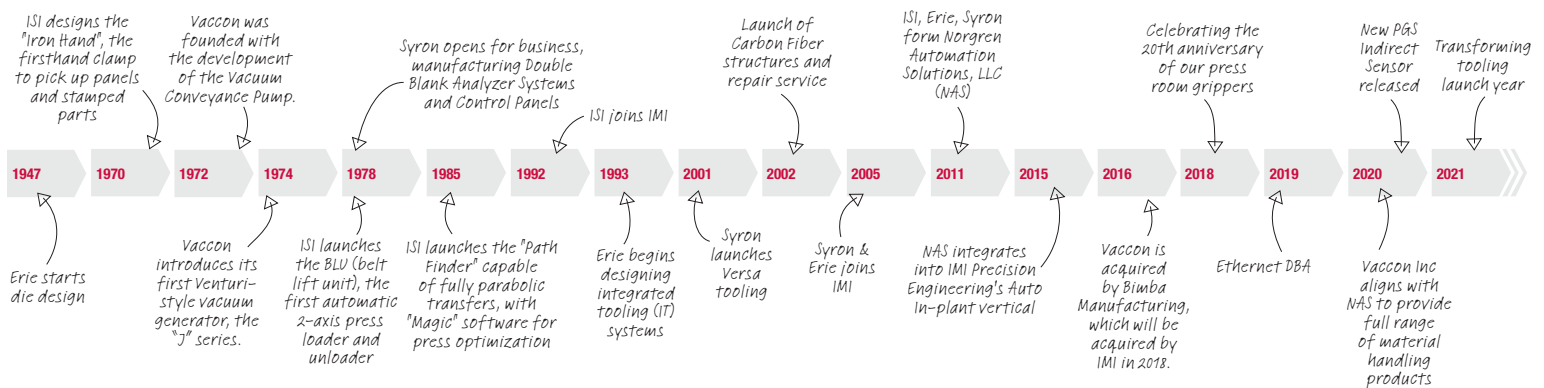
**06**

**Features**

**08**

**Our Global Reach**

**14**



# Breakthrough Engineering for a Better World

Norgren is part of global engineering organisation IMI plc. IMI is at the forefront of delivering the solutions we need in a changing world and is focused on **creating tremendous value by solving key industry problems** in attractive markets and employing the best.

Norgren has a proud history of creating innovative engineering solutions in precise motion control and fluid technology, and we collaborate with our customers across more than 50 countries in critical areas such as Factory Automation, Material Handling, Rail, Energy, Process Control, Life Science and Commercial Vehicles.

From improving speed, productivity, reliability and efficiency of equipment, to generating significant energy and cost savings, or lowering total cost of ownership across many industries, Norgren's high-quality solutions are designed to help customers pursue progress, achieve new goals and overcome problems.

Our world-class portfolio of fluid and motion control products include Norgren, Bimba, Buschjost, FAS, Herion, Kloehn and Maxseal. Supplied either individually or combined into powerful customised solutions to meet customer needs.

With market-leading industry expertise, we offer the capability, resources, engineering intelligence and global support infrastructure to tackle the largest project demands.

**Breakthrough engineering you can count on.**



**Breakthrough Engineering for a Better World**

# Benefits



## Transforming Tooling Optimizes the Press Room

### Industry Problem

As the industry evolves into a low-volume/high mix market, stampers are tasked with capacity constraints, increased safety & ergonomic challenges, lack of tool storage space, and tool changes that are timely and expensive

### The Solution

Transforming Tooling supports these future challenges and allows manufacturers to gain capacity in press room stamping, eliminates manual labor and ergonomic/safety issues, and maintenance for thousands of tools

### Benefits

- » One robotic tool covers any panel the press is specified for
- » Quick tooling changeover using pre-programmed jobs
- » Remote adjustment of tool arms-pick points- through HMI
- » Intelligent crash mitigation and instant tooling recovery



## Return on Investment consideration:



How many people and how much time are needed for each changeover?



How often do you adjust manual tooling?



What are typical labor costs per hour?



How many different panels do you run?



How much do you spend on manual tooling?



What other material handling challenges does your business face?

# Engineered Solution

Unlike conventional tooling which is configured to work with a single panel, Transforming Tooling is designed as a system capable of reconfiguring itself to handle all panel sizes and shapes the press line is capable of processing.

**One set of tools is all you'll ever need!**

## System optimized to:

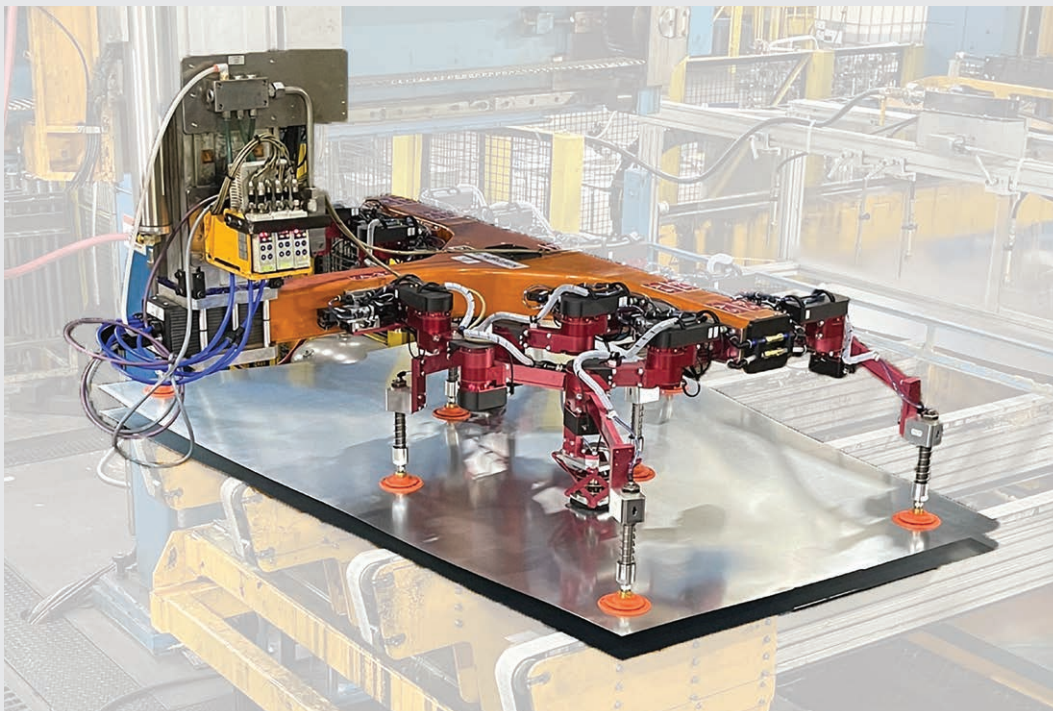
- » System is configured to match your machine/material handling application
- » Arms and Motorized Joints determined to fully support your workpiece
- » Minimum/Maximum motion of each arm covers your range of workpieces and optimizes pick point location

## System is engineered for:

- » Small to large workpieces
- » Light to heavy applications
- » Optimized material pick points

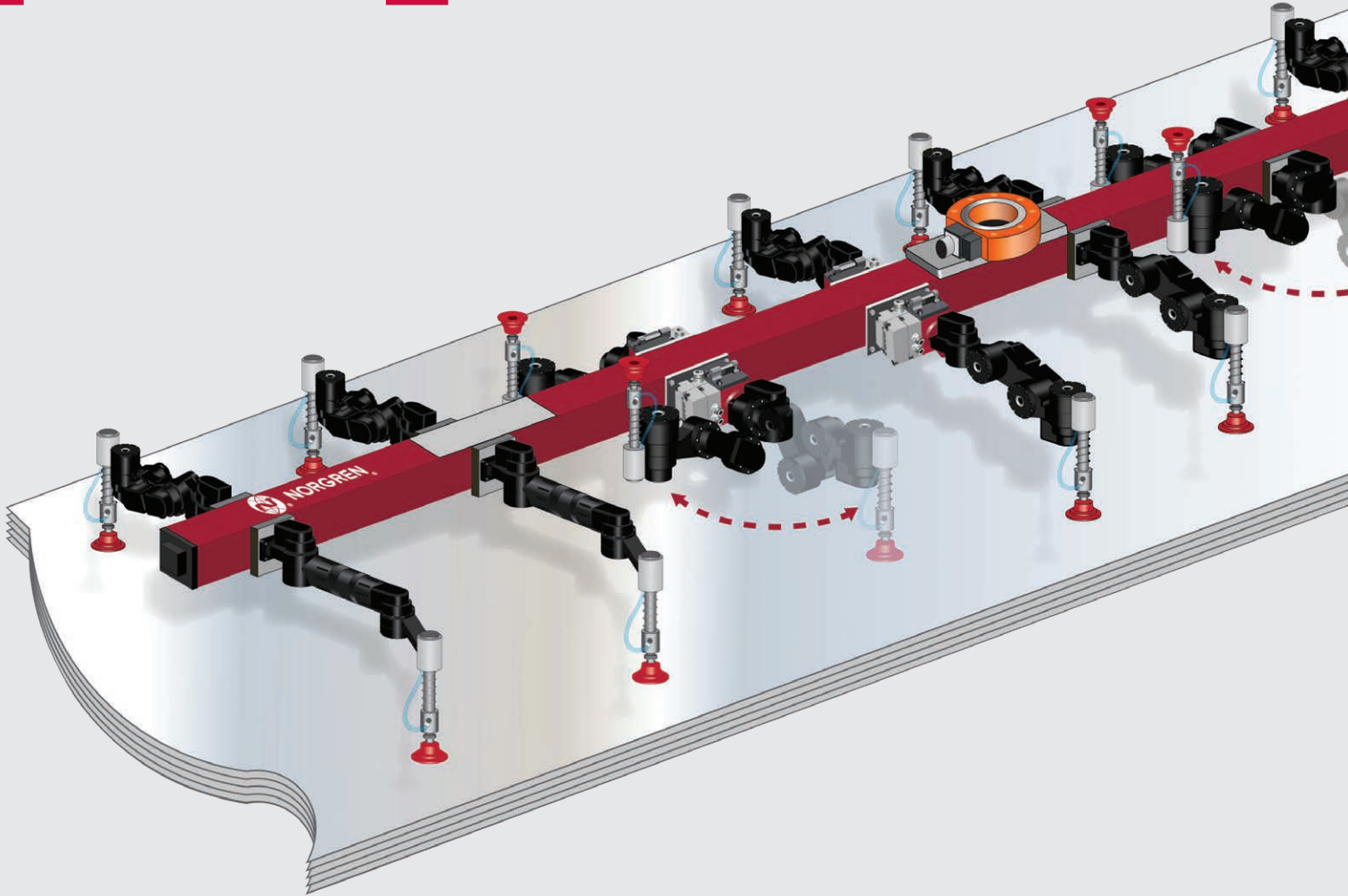
## System utilizes:

- » Standard Arms/Joints
- » Fully integrated HMI
- » Optimized support structure
- » Software for creating and utilizing motion plans



# Features

## 1 Supervisor & Safety Cabinet with PLC Connection



### Communication Highlights:

#### Press Communication

- » Communicates what job, when to change, health, when to stop if there is loss of part or crash
- » Ethernet IP, PROFINET
- » Able to directly integrate on Sieman 1500 PLC
- » Consult NAS for other communication options

#### Supervisor Controller

- » Stores the library of motion plans, connects arms to press

#### Number of Jobs

- » 100+ motion plans

#### Arm Communication

- » Supervisor Controller to arms via CAN bus





**Health Status**

- » Arm position monitoring, arm status, vacuum status for part present

**Job Change time**

- » Job specific, but typically <1 minute

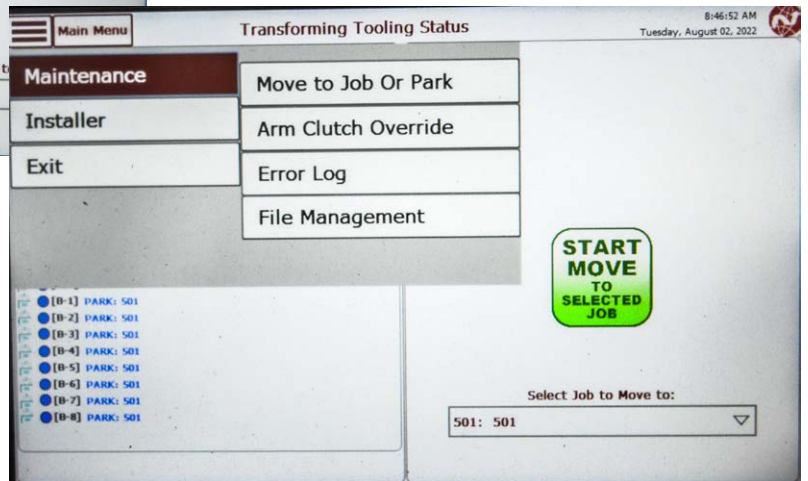
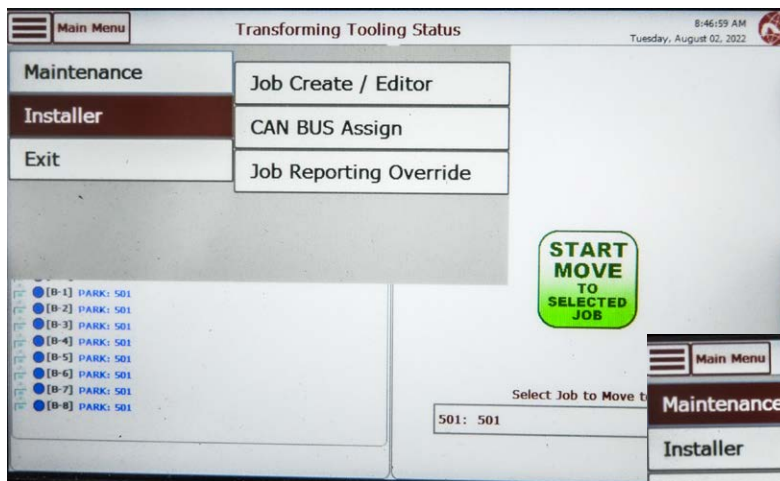
**Motion Plan**

- » Defines individual arm movement timing and position for each job. Stored in the Supervisor Controller

**Arm Repair**

- » Communication is restored without secondary tools within minutes. No need to home or calibrate.

# Features



## Human Machine Interface Highlights:

### Hardware

- » Industrial Tablet, Pendant, PLC, PC

### Operating Software

- » Java, Win CC

### Status Screen

- » Provides status. Cell PLC provides the commands for what job, when to change

### Adjustment

- » Provides the ability to adjust position of arms and ability to save

### Health

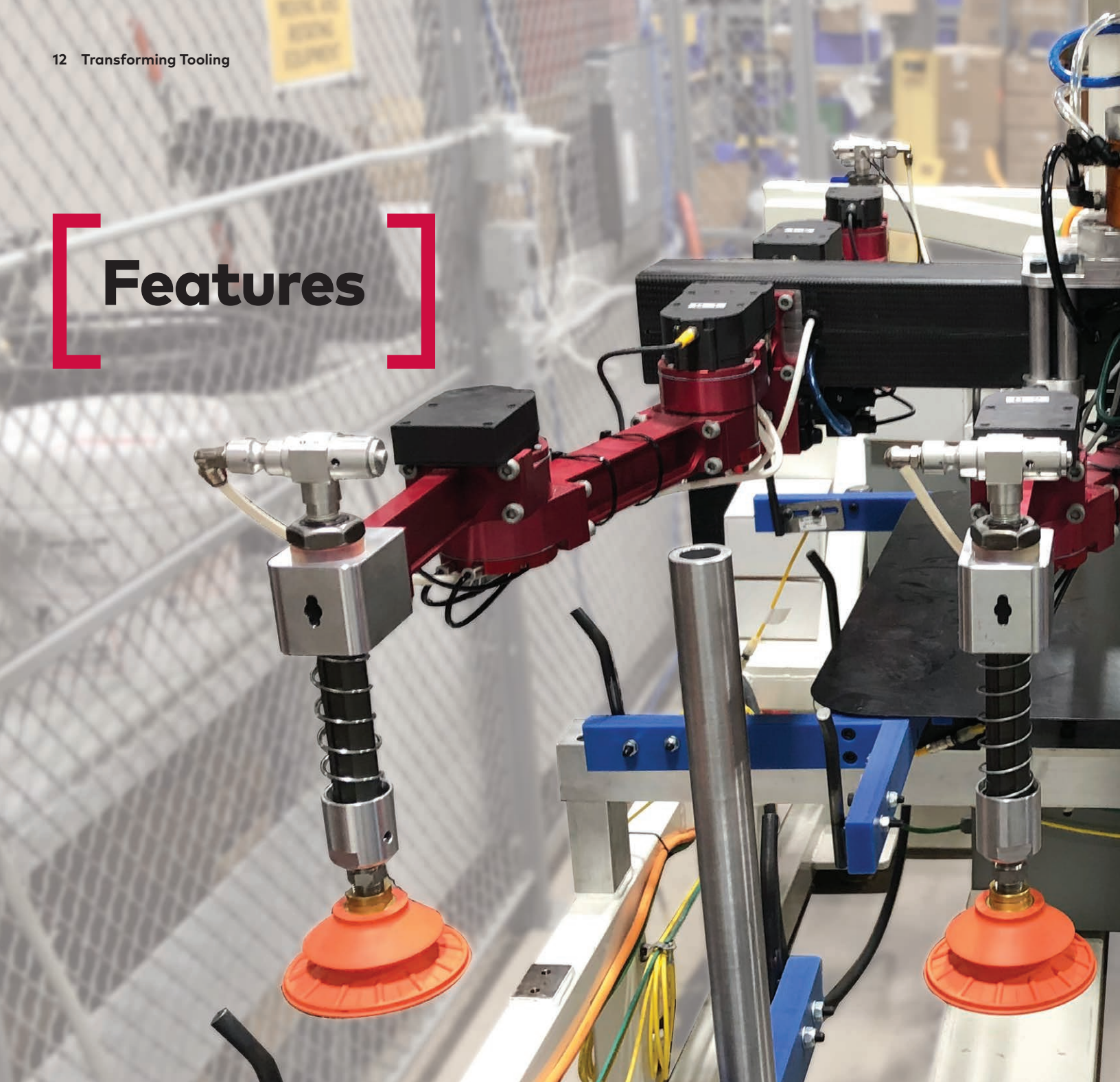
- » Provides information on the health of the system. Supports Industry 4.0 – tracking, trends, predictive maintenance

### Motion Plan

- » Ability to import engineered motion plans
- » Ability to create new motion plans on the fly or in emergency situations



# Features



## Crash Mitigation/Recovery Highlights:

### Arm motion to a new job

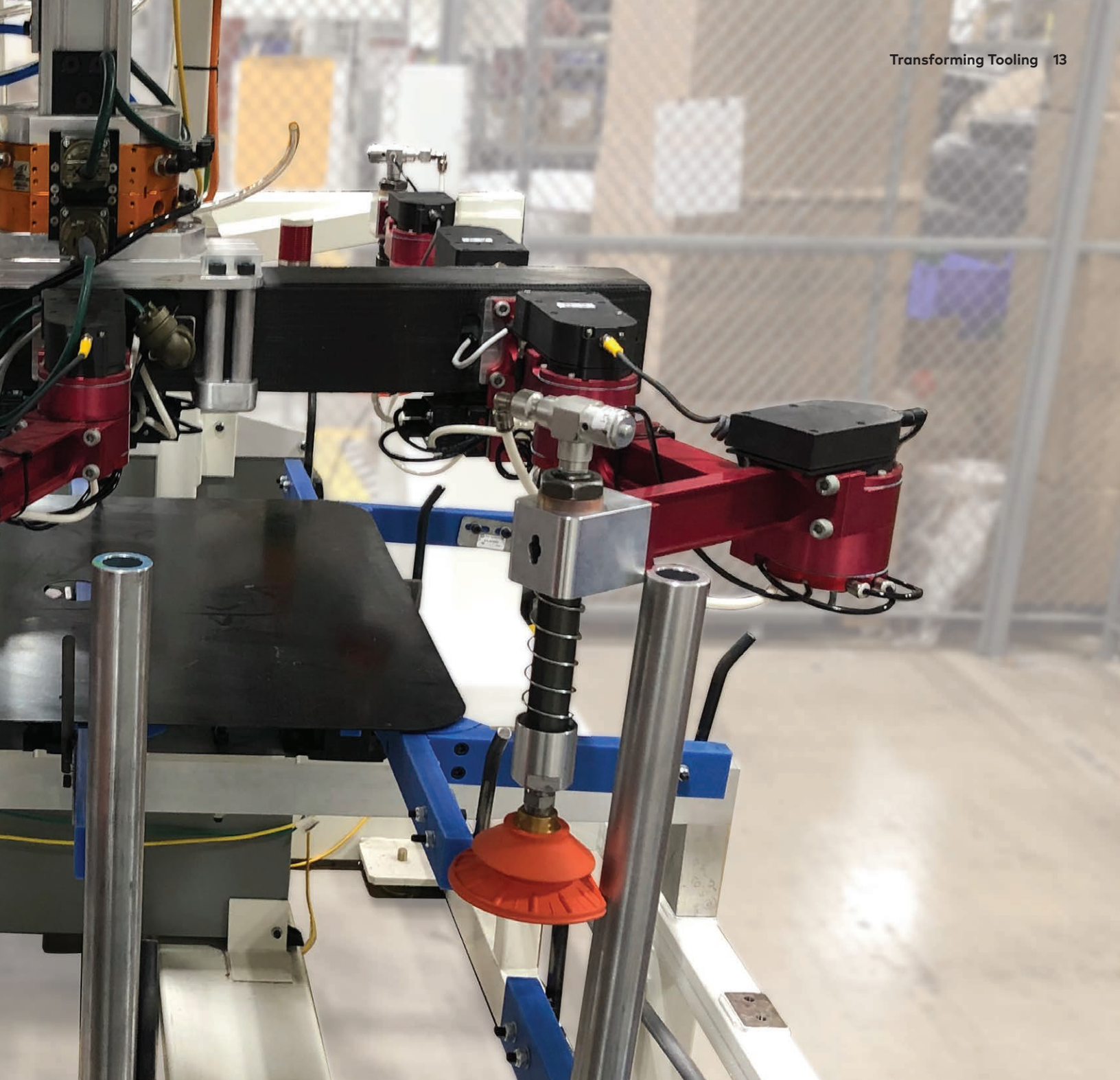
- » Arm collision will cause clutch slippage and notify operator to clear obstruction – no damage possible

### Arm/Joint moves out of position

- » Sensor, Signal, HMI, Emergency Stop, Clutches, Auto Adjust – all provide protection

### Severe System crash

- » Swap the arm, restore communication within minutes



## Arm/Joint Highlights:

### Position Sensing

- » Absolute positioning technology joint to joint

### Life Span

- » 15 years, 50,000 Changes

### Arm Weight

- » 2-joint shown – 6.8 kg (15 lbs)

### Dynamic Rating

- » 200 Nm (150 ft lb) when locked for part transfer

### Safety

- » Clutch slips at 30 Nm (20 ft lb) when unlocked for job change

### Power

- » 480 watt typical for 16 arm system
- » 30 watt per arm

### Maximum Arm Reach

- » Variable to application needs (limited by dynamic rating)

# Our Global Reach

With established manufacturing facilities globally, we have the capability to cope with the most demanding of international projects. With a sales and service network in 50 countries, we have the reach and capability to ensure continuity of supply and local support where it is needed.

## Global Locations and Partners

### Norgren – Material Handling Locations

#### USA

Norgren Automation Solutions, LLC (NAS)  
2871 Bond Street  
Rochester Hills, MI 48309 USA

Tel: 1-800-272-4511  
Fax: 1-734-429-2981  
Email: NASInsideSales@imi-precision.com  
Web: www.materialhandling.norgren.com/en

#### USA

Norgren Automation Solutions, LLC (NAS)  
1325 Woodland Drive  
Saline, MI 48176 USA

Tel: 1-800-272-4511  
Fax: 1-734-429-2981  
Email: NASInsideSales@imi-precision.com  
Web: www.materialhandling.norgren.com/en

#### Mexico

Norgren S.A. de C.V.  
Av. La Montaña No.120  
Parque Industrial Querétaro  
Sta. Rosa Jáuregui, Querétaro  
Mexico 76220

Tel: +52 442 229 5010  
Email: nas.mexico@imi-precision.com

#### Brazil

IMI Norgren Brazil  
Av. Eng. Alberto de Zagottis 696  
04675-085 - São Paulo - Brazil

Tel: +55 11 5698 4000  
Fax: +55 11 5698 4001  
Email: vendas@imi-precision.com



Canada

Auburn, WA

Las Vegas, NV

University Park, IL  
Littleton, CO

USA

Mexico

Queretaro, MX

South America

Sao Paulo, BR

UK

Birmingham, UK

Spain

Barcelona, SP

### Sales & Service

- 📍 Norgren sales, manufacturing and technical centers
- 🏭 Norgren Material Handling locations

**China**

**Norgren Co., Ltd**

埃迈诺冠商贸（上海）有限公司.

Tel: +86 21 24161800

sales@imi-precision.com.cn

**India**

**IMI Norgren Herion Pvt. Ltd.**

A-62, Sector 63,

Noida- 201301

Uttar Pradesh

India

Tel: +91 (0) 120 4089500

Fax: +91 (0) 120 4089599

Email: india@imi-precision.com

**Spain**

**IMI Norgren S.A.**

Colom, 391, 2º - Edificio Tecno

08223 Terrassa

Tel: +34 937489800

Email: spain@imi-precision.com

**Thailand**

**Norgren Co., Ltd**

120/34 M. 12 Rachadhewa, Bangplee

Samutprakarn

10540 Thailand

Tel: +66 (0) 2 2750 3598

Fax: +60 (0) 2 750 3855

Email: THSales@imi-precision.com



Norgren operates four global centres of technical excellence and a sales and service network in 50 countries, as well as manufacturing capability in Brazil, China, Czech Republic, Germany, India, Mexico UK and the USA.

For information on all Norgren companies visit

[www.norgren.com](http://www.norgren.com)

**Supported by distributors worldwide.**

For further information, scan this QR code or visit <https://materialhandling.norgren.com/en>



Norgren, Buschjost, FAS, Herion, Kloehn, Maxseal and Thompson Valves are registered trademarks of Norgren companies.

Due to our policy of continuous development, Norgren reserve the right to change specifications without prior notice.

16370SP en/03/2023

Selected Images used under license from Shutterstock.com

Incorporating

