



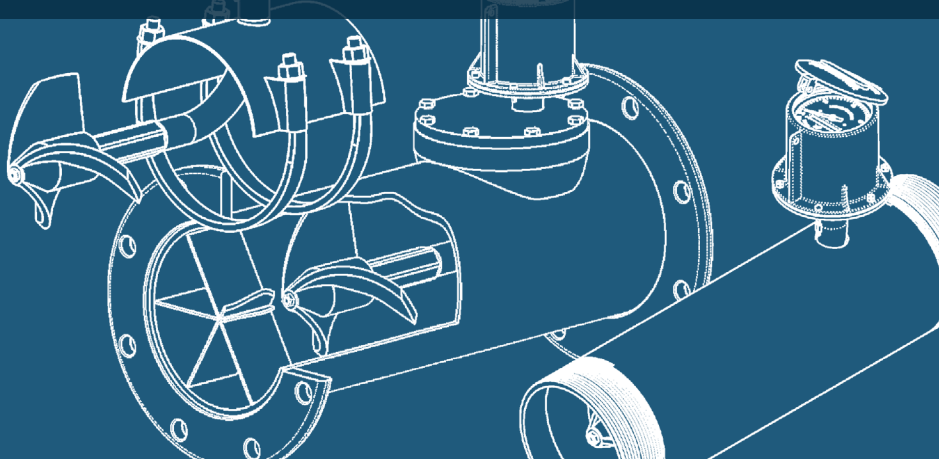
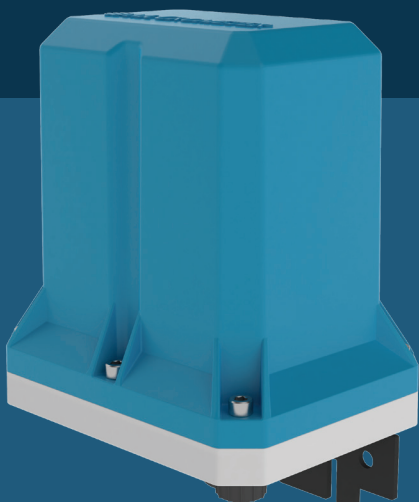
Reliable, Accurate Data Collection. Anytime, Anywhere.

SmartTrax provides remote meter/sensor readings at an economical price point that is streamlined, simple to use, and keeps users informed with minimal effort. This highly compatible unit gives users confidence in their flow monitoring, saves money, time and resources as well as providing efficient data, resulting in effective resource allocation.

SmartTrax also allows users to easily meet regulatory requirements, properly manage resources, and make informed decisions about daily water usage. SmartTrax's ExactRead™ technology gives users data integrity, as the totalizer data is an exact match from meter to website, regardless of brand or technology.

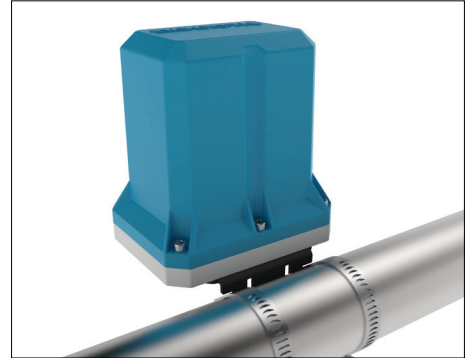


SmartTrax can be used with any McCrometer Flowmeter, including:
MCPopeller • UltraMag • DuraMag • Water Specialties • FPI Mag • And More!



Features and Benefits

- **Trusted Connectivity** - Stay connected with redundant coverage
- **Durable Design** - Built-in internal antenna eliminates breaks and reduces water intrusion
- **Power that lasts** - Battery and rechargeable options with solar panel available to keep data flowing
- **Reliable Data** - Never second guess data usage as the reading will always match the data delivered wirelessly
- **Remote firmware updates**



- **SmartTrax can be used with any meter that has an output, including other meter brands**
- **Can be purchased with a meter or quickly retrofitted in the field to get data delivered remotely**
- **One-piece design is durable, affordable and hassle free**
- **Can take an additional input and transmit that data along with flow data**



 **McCROMETER**