



Patent Information: [malema.com/patents](http://malema.com/patents)

## Key Features

- **~85% reduction in peak to peak flow pulsation**
- **Wetted fluid path made of Polyurethane and PEEK that meets USP Class VI, USP 661.2, and USP 788 requirements**
- **Patent-pending single-use design eliminates pulsation in flow rate and line pressure**
- **Gamma-stable to 50 kGy**
- **Available for line sizes from 1/16" to 1" ID, and with hose barb or tri-clamp fluid connections**
- **Pressure rating to 90 psi (6 bar)**

# DMP-7000 Single-Use Pulsation Dampener

## Description

The DMP-7000 pulsation dampener is designed for single-use applications in the life sciences industries.

Positive displacement pumps, such as diaphragm and peristaltic pumps, produce pulsations in the fluid. These pulsations can negatively impact single-use pharmaceutical production processes such as TFF and chromatography, which need tightly controlled flow rates and line pressures. Malema's single-use dampeners reduce pulsation and variations in flow of critical biopharmaceutical media in processing and transfer applications.

DMP-7000 dampeners are manufactured with all-plastic wetted surfaces that meet USP Class VI, USP 661.2, and USP 788 requirements. The molded design reduces shear and improves surface smoothness. They are gamma-stable to 50 kGy.

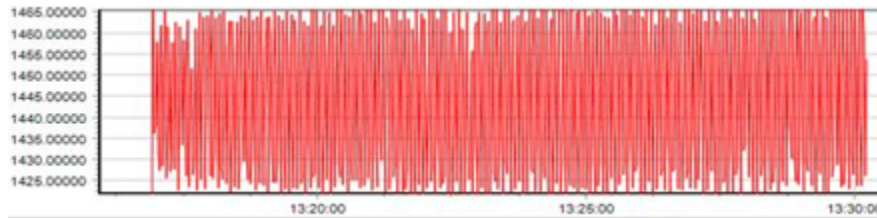
## Applications

- Filling and Fluid Transfer
- Chromatography
- Tangential Flow Filtration
- Depth Filtration

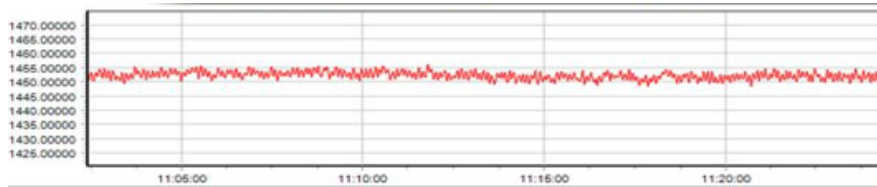
**Principal of Operation**

Fluid enters the DMP-7000 pulsation dampener downstream of the positive displacement pump. Inside the dampener, a series of flexible polyurethane membraned chambers absorb the pulsation caused by the pump and stabilizes the downstream flow rate.

**Flow Output Traces**



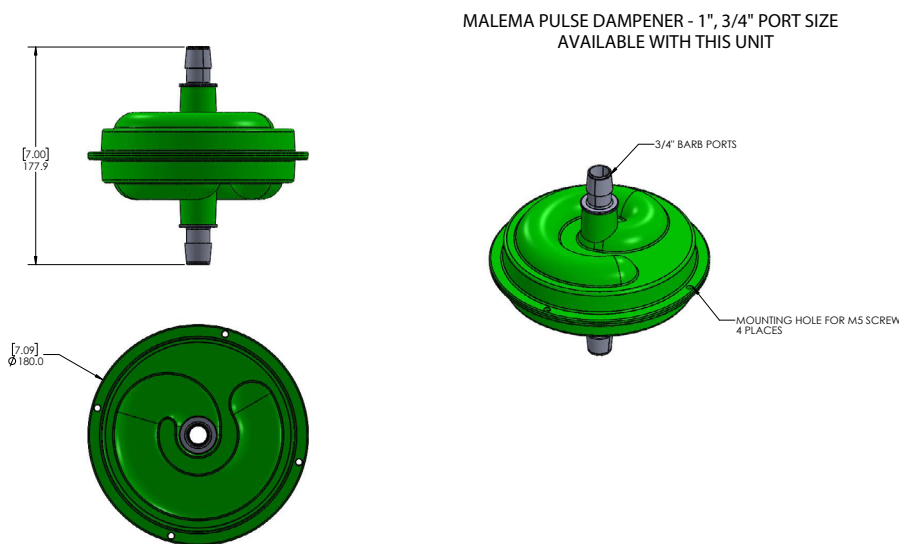
**Figure 1.** 1/4" ID fluid path with water, pumped using industry-standard diaphragm pump without dampener. The difference between min and max flow is approx. 40 g/min at 1445 g/min nominal flow rate



**Figure 2.** The same 1/4" ID fluid path with water, pumped the same industry-standard diaphragm pump with DMP-7000 installed between pump and flow meter. The difference between min and max flow is approx. 5 g/min at 1453 g/min nominal flow rate

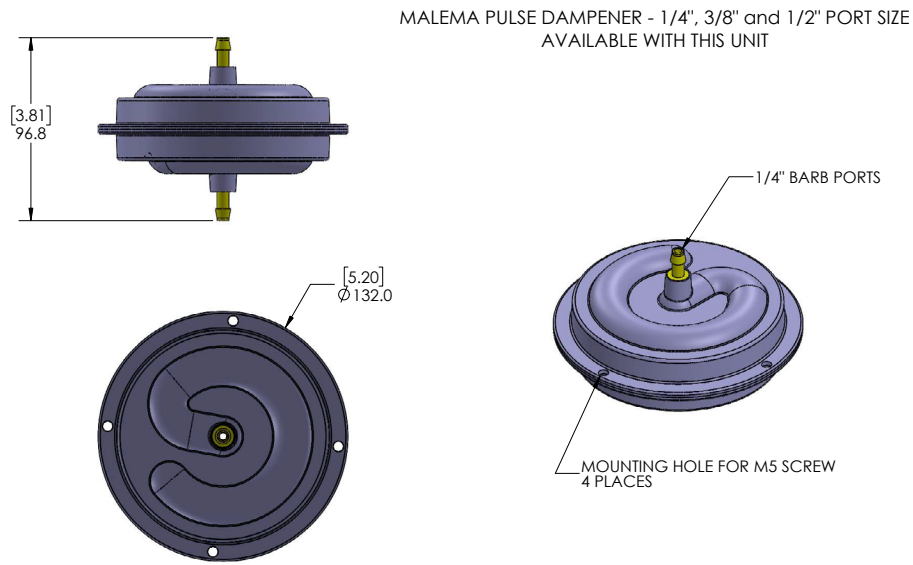
**Dimensional Drawings**

FOR REFERENCE ONLY

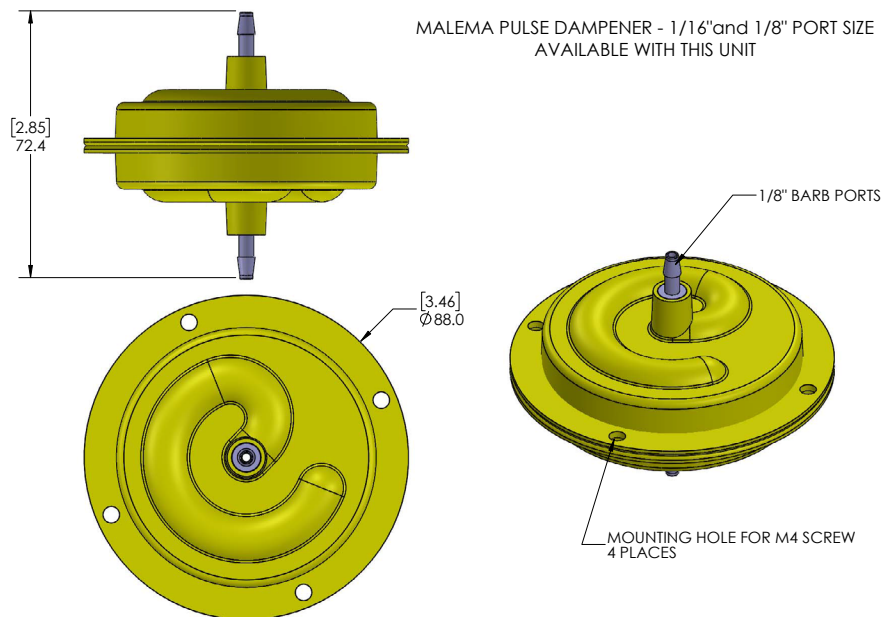


**DMP-7000**  
**Dimensional Drawings**  
**FOR REFERENCE ONLY**

# Single-Use Pulsation Dampener

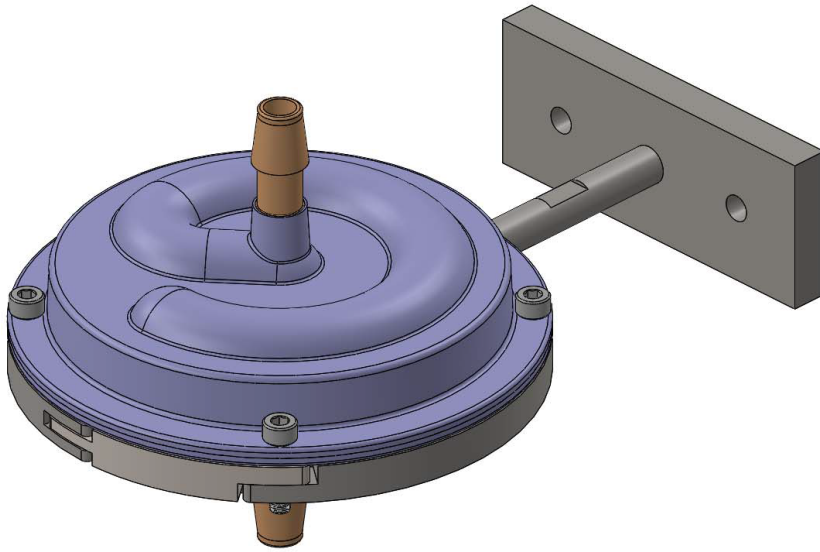


**Dimensional Drawings**  
**1/8" and 1/16" sizes available Q1 2021**  
**FOR REFERENCE ONLY**

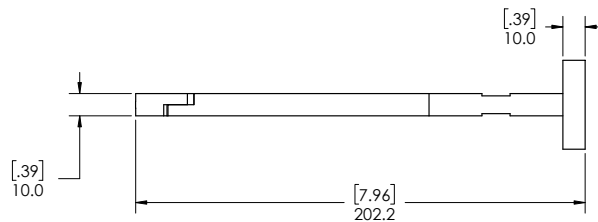
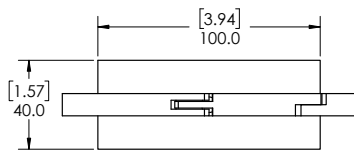
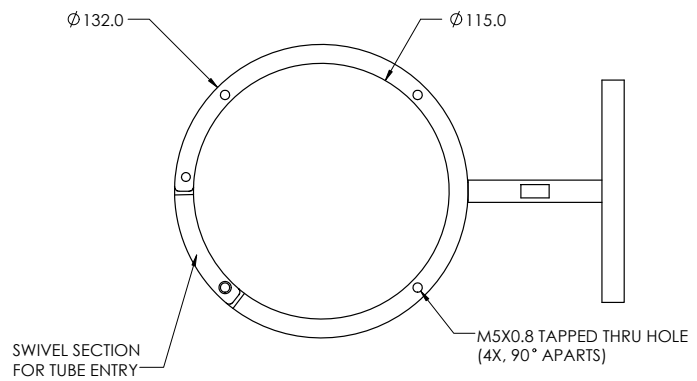
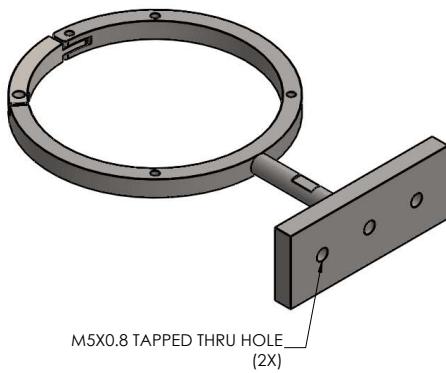


**Dampener Holder**

Malema provides stainless-steel dampener holders to securely mount the dampener in place. Please see the example below for 1/4", 3/8" and 1/2" sizes.



THIS HOLDER CAN BE USED FOR 1/4", 3/8" AND 1/2" DAMPENERS



DIMS ARE IN MM [IN]

# DMP-7000

## Ordering Information

# Single-Use Pulsation Dampener

Model Ordering Code for Dampener						Description	
DMP-7000	-	**	*	*	-	***	Single-use Fluid Dampener
	-						
Size (ID)	01						1/16" *
	02						1/8" *
	04						1/4"
	06						3/8"
	08						1/2"
	12						3/4"
	16						1"
Fluid Connection	H						Hose Barb
	T						Tri-Clamp (Mini TC for fractional sizes)
Sterilization	0						No Sterilization
	1						Gamma Irradiated to 50 kGy MOQ of 50 pieces
Unique Identifier					-	XXX	Assigned by Factory

\* Available Q1 2021

Model Ordering Code for Holder						Description	
DMP-HOLDER-7000	-	**	-			***	Durable Dampener Holder
	-						
Size	02						1/16" - 1/8"*
	08						1/4" - 1/2"
	16						3/4" - 1"
Unique Identifier					-	XXX	Assigned by Factory

\* Available Q1 2021

© 2021 Malema Engineering Corporation. All rights reserved.

Malema Sensors is a registered trademark of Malema Engineering Corporation. Malema Engineering Corporation, Malema, and the Malema logo are trademarks of Malema Engineering Corporation. All other trademarks are property of their respective owners.

Malema supplies this publication for informational purposes only. While every effort has been made to ensure accuracy, this publication is not intended to make performance claims or process recommendations. Malema does not warrant, guarantee, or assume any legal liability for the accuracy, completeness, timeliness, reliability, or usefulness of any information, product, or process described herein. We reserve the right to modify or improve the designs or specifications of our products at any time without notice. For actual product information and recommendations, please contact your local Malema representative.

#### Corporate Headquarters

1060 S. Rogers Circle  
Boca Raton, FL 33487  
P: (561) 995-0595 F: (561) 995-0622

#### West Coast Headquarters

2329 Zanker Road  
San Jose, CA 95131  
P: (408) 970-3419 F: (408) 970-3426

#### Asia Pacific Headquarters

35 Marsiling Industrial Estate Road 3 #02-06  
Singapore 739257  
P: (65) 6482-3533 F: (65) 6484-4231