

Fulflo® EB Multi-Bag Filter Vessel

304 stainless steel, commercial
(non ASME code) design

The Fulflo EB non ASME code multi-bag filter vessels provide economical filtration of a wide variety of liquids in a bottom-in bottom-out, externally polished stainless steel design.

Features include a swing bolt secured, quick opening cover and individual internal bag sealing devices.

EB multi-bag vessels accommodate #2 (double length) Parker "G" style bags with a 7" diameter rim.

These vessels are manufactured from polished and passivated 304 stainless steel and rated for 150 psi (10.3 bar).

For added corrosion resistance, all cover bolt, cover davit and mounting legs are also stainless steel.



Contact Information

Parker Hannifin Corporation
domnick hunter
Process Filtration - North America
2340 Eastman Avenue
Oxnard, California, USA 93030

toll free +1 877 784 2234
phone +1 805 604 3400
fax +1 805 604 3401
dhpsales.na@parker.com

www.parker.com/processfiltration

Benefits

- Swing bolted o-ring closure seal provides quick and positive seal and easy access to the vessel interior and filter bags.
- ANSI B16.5 flanged inlet & outlet connections
- EPDM seals are standard with other material options available
- Standard threaded FNPT vent and drains
- Standard stainless steel closure bolt hardware
- Polished exterior and pickle passivate interior/exterior for enhanced corrosion resistance
- Bottom in-line connection design

Applications

- Potable Water
- Cutting Oils
- Solvents
- Coolants
- Process Water
- Coatings
- Lubricant



ENGINEERING YOUR SUCCESS.

Fulflo® EB Multi-Bag Filter Vessel

Material of Construction	Max. Allowable Pressure (MAP) (psi @ MAT °F)	Max. Allowable Temp. (MAT) (°F @ MAPpsi)
304 Stainless	150 psi (10.3 bar)	300°F (149°C)

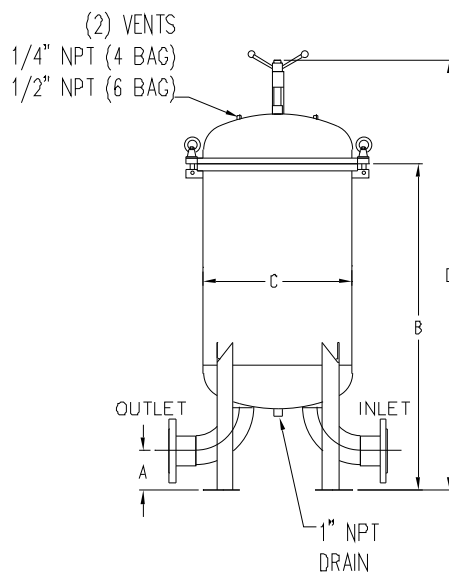
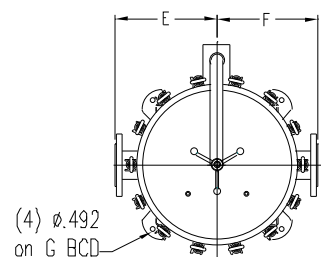
O-ring Temperature Guide	
Material	Max. Temp.
Nitrile (Buna-N)	250°F (121°C)
EPDM (EPR)*	300°F (149°C)
FKM (Viton®)	400°F (204°C)

*EPDM o-ring is standard.
O-rings installed under the cover and under the basket rim.

Typical aqueous flow*		
Model	Bag Qty.	Capacity (gpm)
EBG_4	4 x #2	640
EBG_6	6 x #2	960

*Based on 160 gpm water per #2 double bag

Vessel dimensions							
Model	A	B	C	D	E	F	G
EBG4D4F	5.94	46.06	21.88	62.00	16.00	16.00	27.75
EBG6D6F	7.09	53.13	27.81	70.69	17.44	17.44	33.94



Ordering Information

4 Bag Vessel

Material of Construction		Bag		Bag Length		Inlet/Outlet Connection	
Code	Description	Code	Qty.	Code	Inches	Code	Size
G	304 SST	4	4	D	31.5	4F	4" Flange

6 Bag Vessel

Material of Construction		Bag		Bag Length		Inlet/Outlet Connection	
Code	Description	Code	Qty.	Code	Inches	Code	Size
G	304 SST	6	6	D	31.5	6F	6" Flange

Specifications are subject to change without notification.
For User Responsibility Statement, see www.parker.com/safety

© 2014 Parker-Hannifin Corporation
domnick hunter Process Filtration - North America
All Rights Reserved
Fulflo is a registered trademark of Parker-Hannifin Corporation
Viton is a registered trademark of E.I. DuPont de Nemours & Co., Inc.



DS_IP_ EB Multi Bag Vessel 2/14 Rev. A