

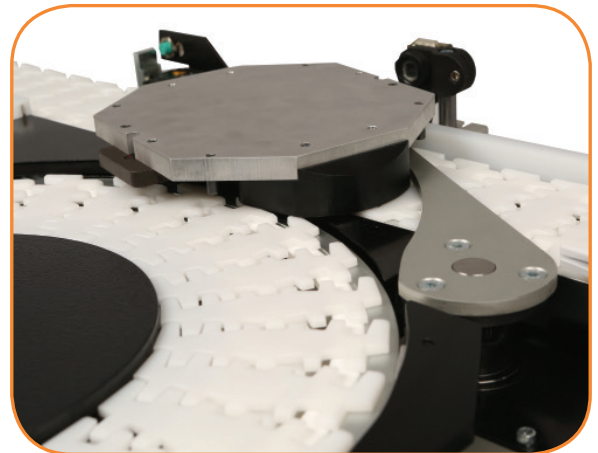
FLEXIBLE CHAIN CONVEYORS WITH PALLETS FOR PRODUCT ROUTING AND CONTROL



- Accurate positioning and routing
- Ideal for manual and automated assembly processes or inspection
- Components sold as kits to allow for easy design changes and layout flexibility
- Pallets sold as kits to allow fixturing or as completed assemblies

Merge & Diverts

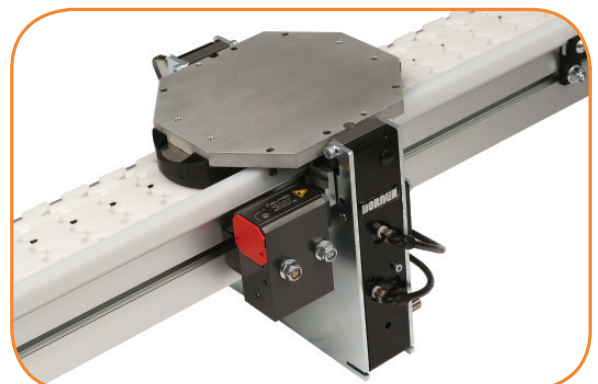
- Multiple Kits styles
 - Divert, Merge, and Merge and Divert
 - Multiple configurations including 45°, 90° and Parallel
- Require pallet or puck stops to be used for product traffic control
- Designed for use with Pucks and Pallets with the Pin Tracking System
- Requires that the conveyor is equipped with guiding. Cutting and fitting of the guiding is required
- Pneumatic diverter. The gate arm location is below the Pin Tracking System, contacts the pallet base puck
- Pneumatic diverter position is adjustable in both positions
- Height of the divert arm is also adjustable



Diverts

Lift & Locate Station

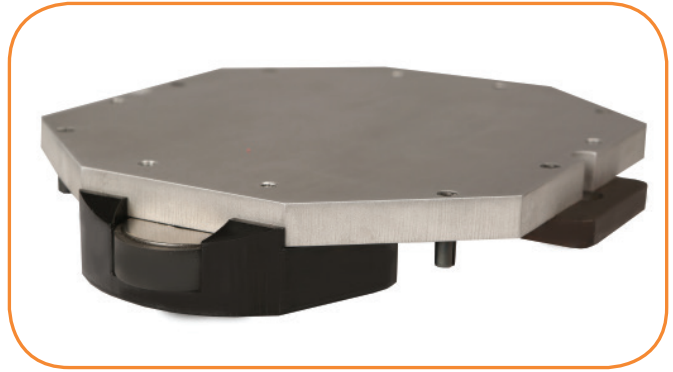
- 105 mm (4 in) Conveyors
- ± 0.1 mm (0.004 in) accuracy
- 91 kg (200 lbs) holding force
- Includes 1 pallet stop (cushioned or non-cushioned)
- Includes sensor mounts
- Sensors and pneumatic valves optional
- Max usable width = pallet width



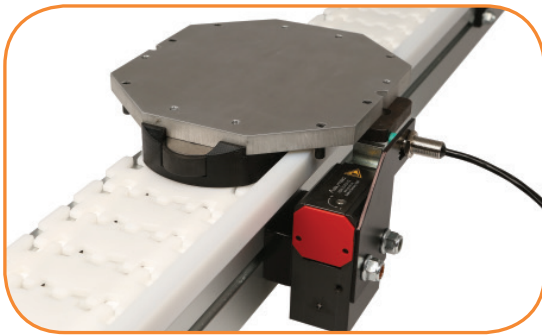
Lift & Locate

Pallets

- 105 mm (4 in) Conveyor
 - 190 mm (7.5 in) wide
 - 100, 150, and 200 mm (4, 6, and 7.9 in) lengths
 - Max product load = 9 kg (20 lbs)
- Aluminum base plate [13 mm (1/2 in thick)]
 - Thickness is dependent on load condition
- (2) Hardened steel location blocks
- Pin Tracking System
 - Pins guide pallet along conveyor
 - Pallet guide only needed on outside of loop
 - Pins provide accuracy at stop location
- Pallets can be purchased as completed assemblies or as kits allowing end user to fabricate their own top plate
- Bumper material available to reduce noise and vibration in accumulated pallets



Pallets



Cushioned Pallet Stop

Pallet Stops

- Pneumatic Stop
- Available in Cushioned & Non-Cushioned Models
- Capable of back to back pacing
- Up to 45 kg (100 lbs) total per pallet stop @ 30 MPM (100 FPM)
- Lower speed increases load capacity
- Higher load options available
- Sensor brackets available either on the stop or as a stand alone part
- Optional stop position sensors available

Transforming Conveyor Automation

Dorner – North & South America

Dorner – U.S.A.

Headquarters

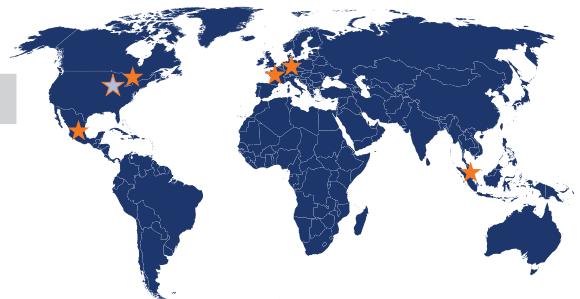
975 Cottonwood Ave
Hartland, WI 53029, USA
(800) 397-8664
(262) 367-7600
info@dorner.com

Dorner – Canada

100-5515 North Service Road
Burlington, Ontario L7L 6G6
Canada
(289) 208-7306
info@dorner.com

Dorner – Latin America

Carretera a Nogales #5297,
Nave 11. Parque Industrial Nogales
Zapopan, Jalisco C.P. 45222
Mexico
+52.33.30037400
info.latinamerica@dorner.com



Dorner – Europe

Dorner – Germany

Karl-Heinz-Beckurts-Straße 7
52428 Jülich,
Germany
+49 (0) 2461/93767-0
info.europe@dorner.com

Dorner – France

8-10 Rue de Nieuport
78140 Vélizy-Villacoublay,
France
+33 (0)1 84 73 24 27
info.france@dorner.com

Dorner – Asia

128 Jalan Permatang Damar Laut, Bayan Lepas 11960
Penang, Malaysia
+604-626-2948 | info.asia@dorner.com

www.dornerconveyors.com