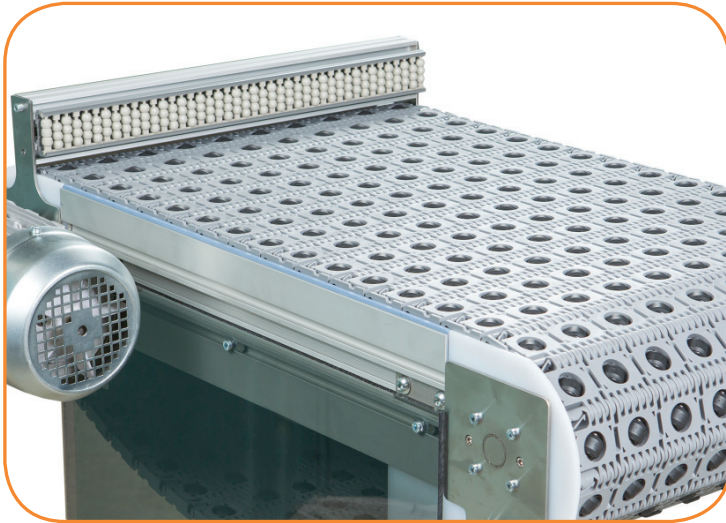




3200 SERIES CONVEYORS WITH INTRALOX ACTIVATED ROLLER BELT™ (ARB) TECHNOLOGY

Innovative Conveyance Technology for Merging, Diverting and Aligning of Product



- Flexibility to handle multiple product sizes without the need for changeover
- Minimizes floor space consumption
- Increased system reliability
- Eliminates costly system controls, reducing complexity
- Encased moving parts provide safer work environments
- Low maintenance solution
- Handles product as small as 6" x 6"

ARB Specifications

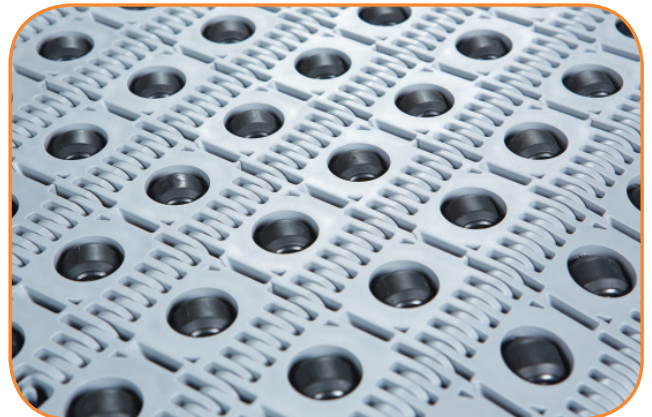
- 2" pitch ARB Chain
- Built on Dorner 3200 Series platform
- Widths: 8" (203 mm) to 60" (1524 mm) in 2" (51 mm) increments
- Lengths: Minimum 3 ft (914 mm)
- Speeds: Up to 150 ft/min (46 m/min)
- Optional Powered Transfer

ARB Solutions

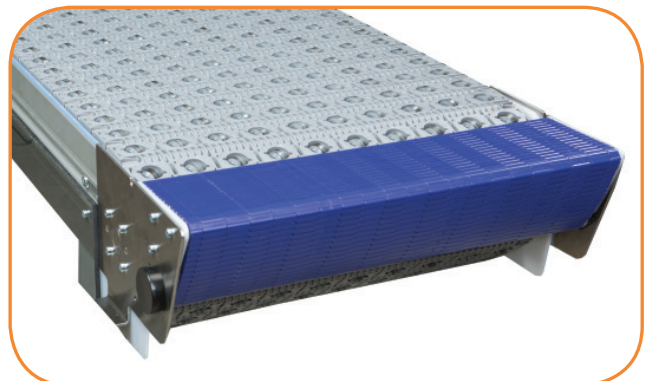
- 90 degree transfers maintaining product orientation
- Aligners / edge justification
- Case turners
- Bump turns
- Touchless low friction merges
- Rejects

Options & Accessories

- Standard support stands and guiding options are available
- All standard 3200 Series mounting packages and gearmotors are available



Low and High Friction Rollers
Passive and Activated Rollers



Optional Powered Transfer

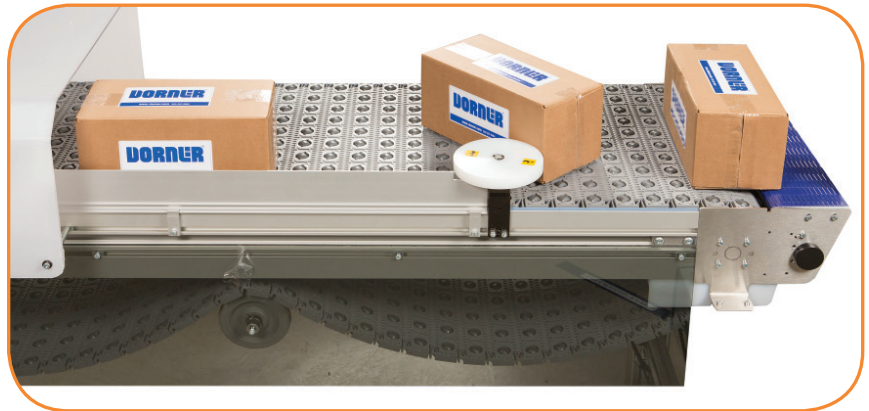
90° Transfers and Lane Merges

- 90° Passive On and 90° Passive Off transfers
- No adjustment needed for different size products
- Requires 6" - 8" gap upstream
- 90° Passive On requires some product momentum, 90° Passive off does not
- Using Passive On, product can merge into a gap on the mainline ARB Conveyor
- Uses Series 400 45° Chain and Passive Rollers



Edge Justification and Bump Turns

- No adjustment needed for different size products
- Edge justification requires no product gap
- Bump turn needs 6" - 8" gap upstream
- A fixed or pneumatically controlled protrusion from the side rail is added to help start the turning process
- Uses Series 400 30° Chain and Activated Rollers



Transforming Conveyor Automation

www.dorner.com



© Dorner Mfg. Corp. 2018. All Rights Reserved. 851-828 REV B 1118

Dorner – North & South America

Dorner – U.S.A. Headquarters

975 Cottonwood Ave
Hartland, WI 53029, USA
(800) 397-8664
(262) 367-7600
info@dorner.com

Dorner – Canada

100-5515 North Service Road
Burlington, Ontario L7L 6G6
Canada
(289) 208-7306
info@dorner.com

Dorner – Latin America

Carretera a Nogales #5297, Nave 11.
Parque Industrial Nogales
Zapopan, Jalisco C.P. 45222 México
+52.33.30037400 | info.latinamerica@dorner.com

Dorner – Europe

Karl-Heinz-Beckurts-Straße 7
52428 Jülich, Germany
+49 (0) 2461/93767-0 | info.europe@dorner.com

Dorner – Asia

128 Jalan Permatang Damar Laut, Bayan Lepas 11960
Penang, Malaysia
+604-626-2948 | info.asia@dorner.com