

## Sensors, Series SN3



AVENTICS™ Sensors, Series SN3

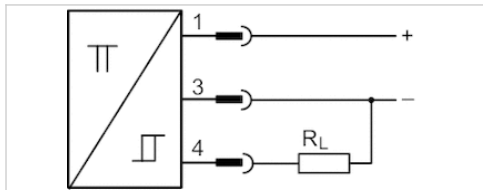


# Sensor, Series SN3

- welding-proof
- Plug, M12, 3-pin
- welding-proof
- electronic PNP
- Indirect mounting for series PRA, PRE, CCI, KPZ, KHZ, FLT, GPC, CVI



|                                  |               |
|----------------------------------|---------------|
| Ambient temperature min./max.    | -25 ... 70 °C |
| Protection class                 | IP67, IP65    |
| Switching point precision        | ±0,1 mT       |
| Nominal current, actuated state  | ≤ 10 mA       |
| Quiescent current (without load) | ≤ 5 mA        |
| Min./max. DC operating voltage   | 10 V DC       |
| LED status display               | Yellow        |
| Vibration resistance             | 55 Hz, 1 mm   |
| Shock resistance                 | 30 g / 11 ms  |



## Technical data

| Part No.   | Type of contact | Voltage drop U at I <sub>max</sub> | DC switching current, max. |
|------------|-----------------|------------------------------------|----------------------------|
| 0830100438 | electronic PNP  | ≤ 1,8 V                            | 0.2 A                      |

| Part No.   | Max. switching frequency |
|------------|--------------------------|
| 0830100438 | 20 Hz                    |

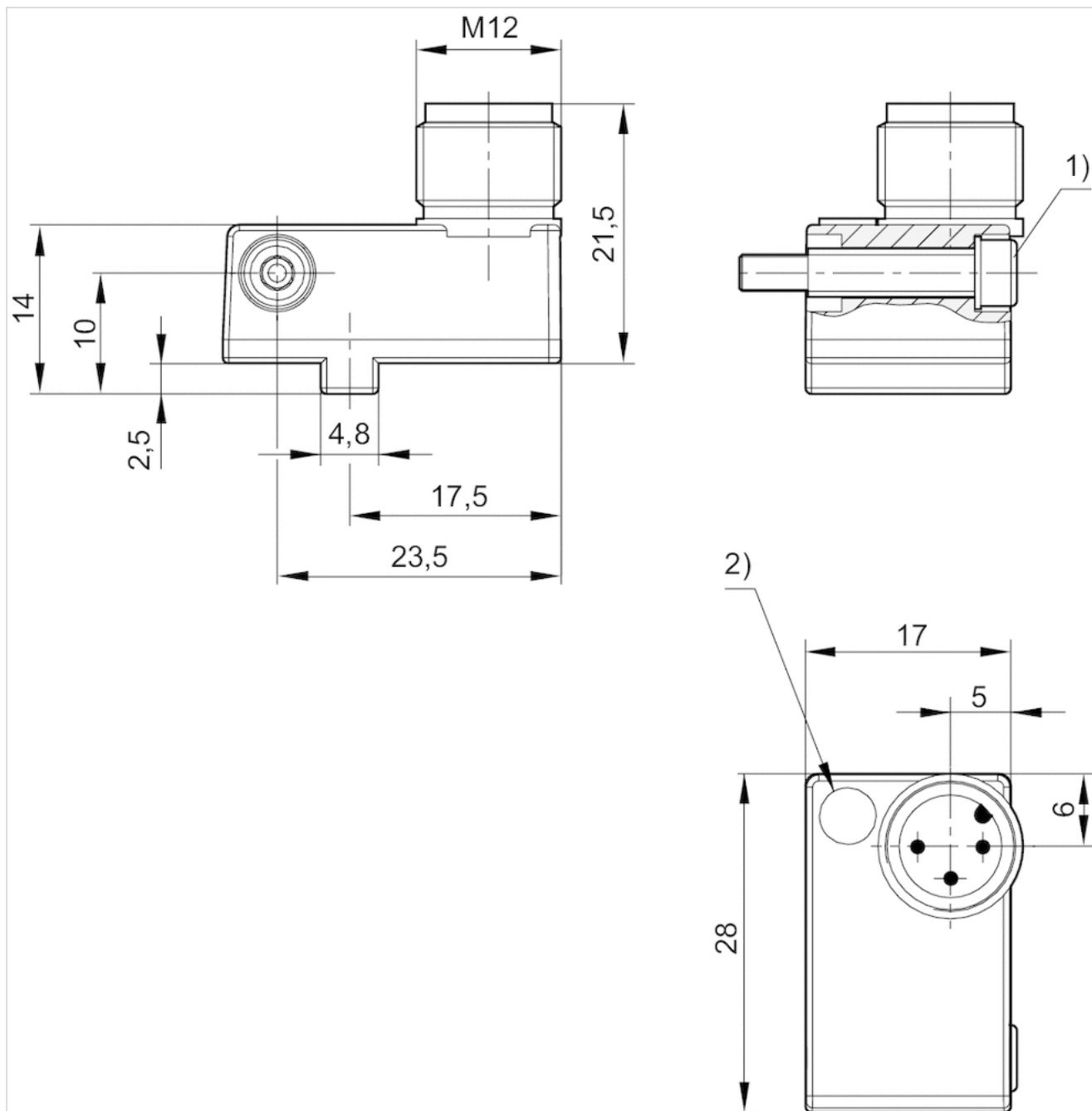
| Part No.   | Version   | welding-proof |
|------------|---|---------------|
| 0830100438 | short circuit resistant Protected against polarity reversal | welding-proof |

## Technical information

| Material |           |
|----------|-----------|
| Housing  | Polyamide |

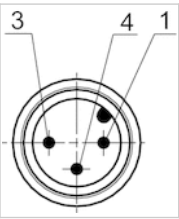
## Dimensions

### Dimensions



Pin assignments

Pin assignments



| Pin               | 1   | 3   | 4     |
|-------------------|-----|-----|-------|
| Allocation        | (+) | (-) | (OUT) |
| EN 60947-5-2:1998 |     |     |       |

# Sensor mounting, Series CB1

- for series SN3
- to mount on cylinder PRA, KPZ, GPC, CCI, KHZ



Weight

0.007 kg

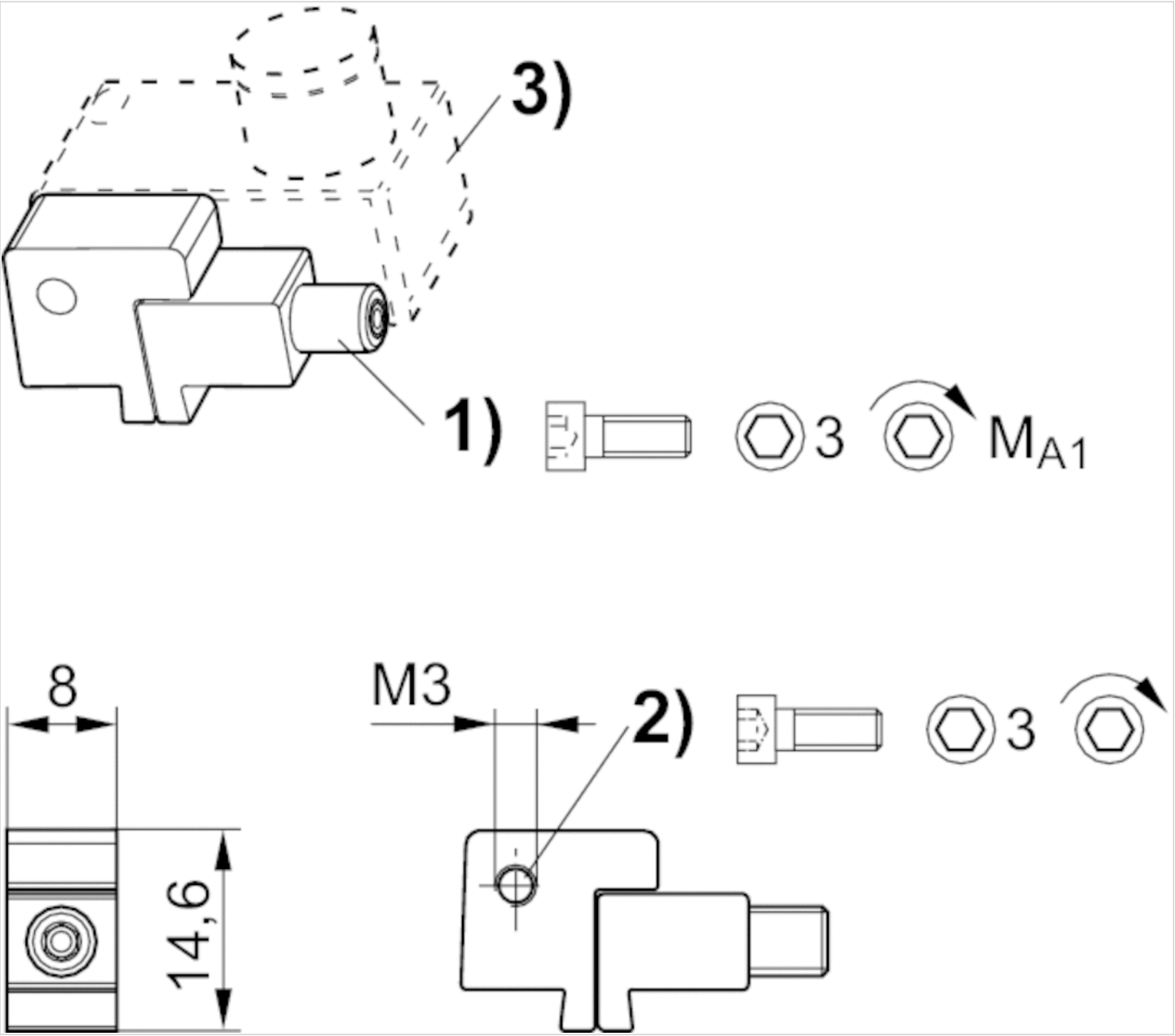
## Technical data

| Part No.   | for series |
|------------|------------|
| 1827020386 | SN3        |

## Technical information

| Material |          |
|----------|----------|
|          | Aluminum |

Dimensions



1) Clamping screw 2) Mounting screw for sensor 3) Sensor

Dimensions

| Part No.   | 1)    | MA1 [Nm] |
|------------|-------|----------|
| 1827020386 | M3x25 | 1,8 +0,4 |

# Efficient pneumatic solutions, our program: cylinders and drives, valves and valve systems, air supply management



Visit us: [Emerson.com/Aventics](https://www.emerson.com/Aventics)

Your local contact: [Emerson.com/contactus](https://www.emerson.com/contactus)



[Emerson.com](https://www.emerson.com)



[Facebook.com/EmersonAutomationSolutions](https://www.facebook.com/EmersonAutomationSolutions)



[LinkedIn.com/company/Emerson-Automation-Solutions](https://www.linkedin.com/company/Emerson-Automation-Solutions)



[Twitter.com/EMR\\_Automation](https://twitter.com/EMR_Automation)

An example configuration is depicted on the title page. The delivered product may thus vary from that in the illustration. Subject to change. This Document, as well as the data, specifications and other information set forth in it, are the exclusive property of AVENTICS GmbH. It may not be reproduced or given to third parties without its consent. Only use the AVENTICS products shown in industrial applications. Read the product documentation completely and carefully before using the product. Observe the applicable regulations and laws of the respective country. When integrating the product into applications, note the system manufacturer's specifications for safe use of the product. The data specified only serve to describe the product. No statements concerning a certain condition or suitability for a certain application can be derived from our information. The information given does not release the user from the obligation of own judgment and verification. It must be remembered that the products are subject to a natural process of wear and aging.

The Emerson logo is a trademark and service mark of Emerson Electric Co. Brand logotype are registered trademarks of one of the Emerson family of companies. All other marks are the property of their respective owners. © 2017 Emerson Electric Co. All rights reserved.  
2019-03



## CONSIDER IT SOLVED™