

Electric Actuators
Valvcon® ADC-Series
with Optional Back-Up Power

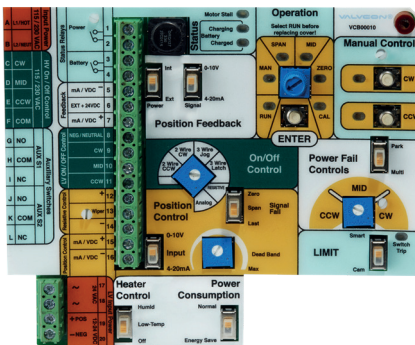


Providing
unparalleled
versatility of
power and
control options

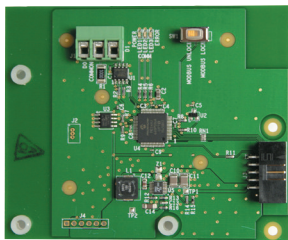




A Tradition of Innovation



Universal on/off / modulating board



MODBUS® communications board (optional)

Metso is a leading designer and provider of compact, reliable, electronically controlled electric actuators for valves and dampers. We offer a complete line of *Valvcon* electric actuators for accurate positioning of dampers and valves in the aerospace, automotive, consumer services, discrete manufacturing, energy, environmental, oil/pipeline, petrochemical, power/utilities, process, recreation, transportation, and water/wastewater industries.

Metso has developed and introduced the industry's most innovative products, including simple "set and go" calibration, intelligent processor-based digital electronics, "Plug-in" accessory boards, "Fail-Safe" actuators, as well as electric actuators designed for remote, solar-powered applications and two-wire network applications. Metso has built its reputation and success on the ability to

envision, implement, and deliver innovative actuator technology products and services to support emerging market requirements. As emerging technologies and market needs continue to evolve, Metso will lead the way with high quality *Valvcon* actuators that exceed industry expectations and further refine the valve actuation process.

ADC-Series actuators with optional back-up power are field-settable for "fail clockwise" or "fail counter clockwise"



Optional Internal Battery Back-Up

Valvcon ADC-Series electric actuators provide up to 3000 inch pounds (250 lb-ft; 339 Nm) of torque and can be equipped with internal back-up power to allow you to safely shut down your system in the event of an external power loss. Engineered to supply dependable valve and damper actuation, they can provide up to 10 complete cycles under their own internal power!

The universal ADC-Series PC board includes both on/off and modulating functionality, and accepts both AC and DC power inputs. The optional back-up power feature incorporates an internal battery pack that plugs right in to the PC board, which includes a built-in charging circuit, all fitting in the standard enclosure. Upon loss of external power the battery automatically activates as the main power supply and can immediately drive the actuator to a designated safe position or continue to respond to a control signal, if present.

"Optional internal battery pack allows for continued modulation during power outages, provided the control signal remains."



Other Valvcon Actuators

V-Series

- Up to 3000 inch pounds (250 lb-ft; 339 Nm) for On/Off, Modulating or Automatic Cycling applications
- 115VAC and 230VAC voltages
- 75% Duty Cycle (55% on 3000 lb-in models)
- NEMA 4/4X and NEMA 4/4X/7&9 enclosures
- CSA (C US) Certified
- CE Compliant
- Certified to ATEX Directive 94/9/EC: Ex d IIB T6 Gb, and IECEx CSA 14.0057X ("WX" models only)
- Standard Features: manual override and visual position indicator
- Available Options: Modulating Control Board, Speed Control/Timer Board, Iso/Readback Board, extra limit switches, heater/thermostats, motor brake, feedback potentiometer, metric and "keyed" female outputs and handwheel override

I-Series Network Capable

- MODBUS®
- AS-Interface
- DeviceNet™
- Foundation Fieldbus
- Other fieldbus protocols (consult factory)
- CSA Certified to Canadian & U.S. standards

Q6-Series for Remote Solar Applications

- 600 inch pounds (50 lb-ft; 68 Nm)
- 12VDC
- Low current draw
- 80% Duty Cycle
- NEMA 4/4X/7&9
- CSA (C US) Certified

QX-Series for Economical DC-Powered On/Off Applications

- Up to 3000 inch pounds (250 lb-ft; 339 Nm) for On/Off applications
- Economical NEMA 4/4X/7&9 solution
- 12VDC & 24VDC voltages
- 80% Duty Cycle
- CSA (C US) Certified
- Standard Features: auxiliary limit switches, dynamic brake, manual override and visual position indicator
- Available Options: metric and "keyed" female outputs, heater/thermostats and handwheel override

Europe

Vanha Porvoontie 229, P.O.Box 304
FI-01301 Vantaa Finland
tel. +358 20 483 150, fax + 358 20 483 151

North America

44 Bowditch Drive, P.O.Box 8044
Shrewsbury, MA 01545, USA
Tel. +1 508 852 0200, fax +1 508 852 8172

South America

Av. Independência, 2500- Iporanga
18087-101, Sorocaba-São Paulo, Brazil
Tel. +55 15 2102 9700, fax +55 15 2102 9748/49

Asia Pacific

Haw Par Centre #06-01
180 Clemenceau Avenue
Singapore 239922
Tel. +65 6511 1011, fax +65 6250 0830

China

19/F, the Exchange Beijing, No. 118
Jianguo Lu Yi, Chaoyang Dist
100022 Beijing, China
Tel. +86-10-6566-6600, fax +86-10-6566-2575

Middle East

Roundabout 8
Unit AB-07, P.O.Box 17175
Jebel Ali Freezone, Dubai, United Arab Emirates
Tel. +971 4 883 6974, fax +971 4 883 6836

For further information please contact
one of our regional offices, or visit our
web site **www.metso.com/electricactuators**

