

# Fulflo® EB Single Bag Filter Vessel

304 & 316 stainless steel, commercial  
(non ASME code) design

The Fulflo EB non ASME code single bag filter vessels provide economical filtration of a wide variety of liquids in a lightweight, externally polished stainless steel design. Features include a secured swing bolt quick open cover and an internal positive pressure bag hold down device.

EB single bag vessels are available to accommodate common industrial filter bag sizes 1, 2, 3 and 4.

These vessels are manufactured from polished and passivated stainless steel and rated for 150 psi (10.3 bar). For added corrosion resistance, all cover bolt and leg mounting hardware is made from stainless steel as well.



## Contact Information

Parker Hannifin Corporation  
**domnick hunter**  
**Process Filtration - North America**  
2340 Eastman Avenue  
Oxnard, California, USA 93030

toll free +1 877 784 2234  
phone +1 805 604 3400  
fax +1 805 604 3401  
dhpsales.na@parker.com

[www.parker.com/processfiltration](http://www.parker.com/processfiltration)

## Benefits

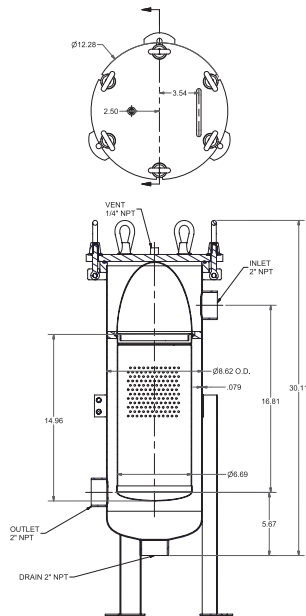
- Swing bolted o-ring closure seal provides quick & positive seal with easy access to the vessel interior and filter bag
- Both FNPT threaded and flanged connections are available in specific models
- NPT models offers dual 2" outlet ports on bottom and side locations
- EPDM seals are standard with other material options available
- Standard threaded FNPT vent & drains
- Standard stainless steel closure bolt hardware
- Polished exterior & pickle passivate interior/exterior for enhanced corrosion resistance
- Mounting legs are adjustable, providing flexibility for installation height & orientation
- Hinged cover for ease of use

## Applications

- Potable Water
- Cutting Oils
- Solvents
- Coolants
- Process Water
- Coatings
- Lubricant

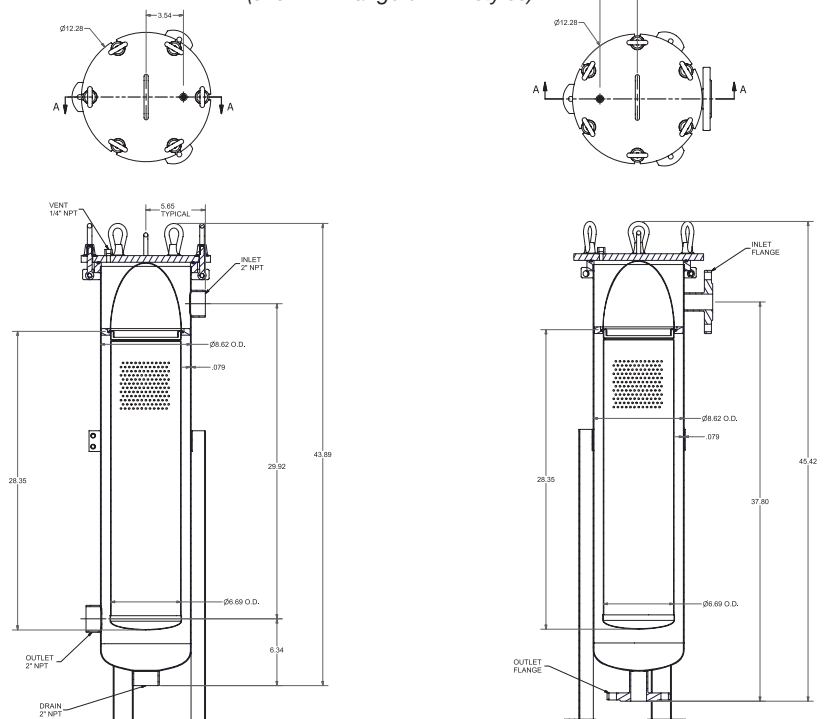
# Fulflo® EB Single Bag Filter Vessel

## SIZE S



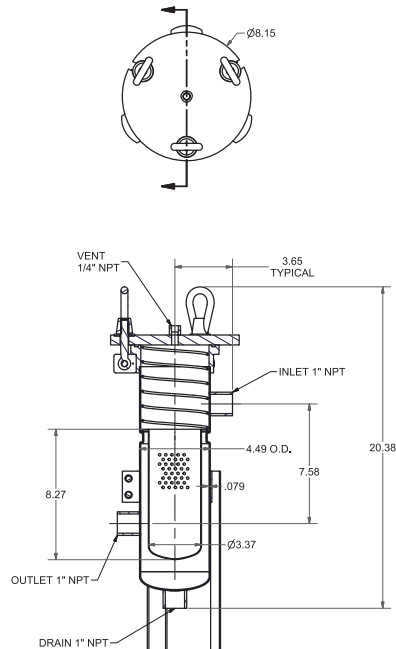
Vessel designed to use (1) #1  
Parker 'G' style bag with 7-1/4" diameter rim  
Inlet elevation adjustable from approx. 21" to 33"

## SIZE D (shown in flange & NPT styles)



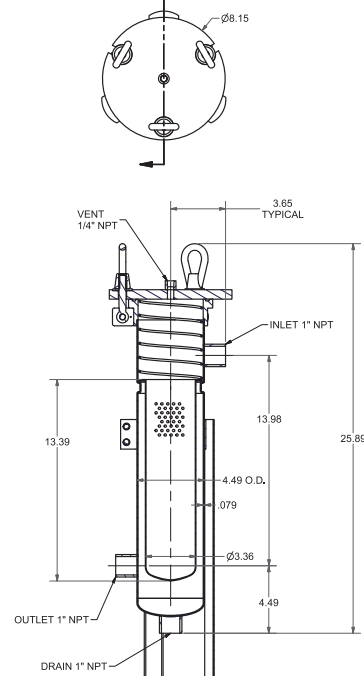
Vessel designed to use (1) #2  
Parker 'G' style bag with 7-1/4" diameter rim  
Inlet elevation adjustable from approx. 37" to 53"

## SIZE 3



Vessel designed to use (1) #3  
Parker 'G' style bag with 4-1/4" diameter rim  
Inlet elevation adjustable from approx. 15" to 19"

## SIZE 4



Vessel designed to use (1) #4  
Parker 'G' style bag with 4-1/4" diameter rim  
Inlet elevation adjustable from approx. 19" to 30"

Specifications are subject to change without notification.  
For User Responsibility Statement, see [www.parker.com/safety](http://www.parker.com/safety)

© 2010 Parker-Hannifin Corporation  
domnick hunter Process Filtration - North America  
All Rights Reserved

# Fulflo® EB Single Bag Filter Vessel

| Material of Construction | Max. Allowable Pressure (MAP) (psi @ MAT °F) | Max. Allowable Temp. (MAT) (°F @ MAP psi) |
|--------------------------|--|---|
| 304 & 316 SST            | 150 psi (10.3 bar)                           | 300°F (149°C)                             |

| Optional O-Ring/Gasket |                   |                    |
|------------------------|-------------------|--------------------|
| Material               | Cover seal part # | Basket seal part # |
| Nitrile (Buna-N)       | 4150-5835-N       | 4150-5834-N        |
| EPDM (EPR)*            | 4150-5835-E       | 4150-5834-E        |
| FKM (Viton®)           | 4150-5835-V       | 4150-5834-V**      |

\*EPDM o-ring is standard. O-ring installed under cover and basket rim  
 \*\*Vessel temperature limited to 300°F (149°C)

## Typical Aqueous Flow

Based on 160 gpm water per #2 double bag &  
 80 gpm per #1 single bag

| Ordering Configurations (Size 1 & 2) |          |               |            |                    |            |  |                |
|--------------------------------------|----------|---------------|------------|--------------------|------------|--|----------------|
| Part #                               | Material | Industry Size | Bag Length | Bag Diameter (in.) | Connection | Features   | Weights (lbs.) |
| EBG1S2T                              | 304SS    | 1             | 16         | 7                  | 2" NPT     | Side in/bottom out or side out design with adjustable legs | 64             |
| EBG1D2T                              | 304SS    | 2             | 32         | 7                  | 2" NPT     | Side in/bottom out or side out design with adjustable legs | 82             |
| EBG1D2F                              | 304SS    | 2             | 32         | 7                  | 2" Flange  | Side in/bottom out with adjustable legs                    | 82             |
| EBS1D2T                              | 316SS    | 2             | 32         | 7                  | 2" NPT     | Side in/bottom out or side out design with adjustable legs | 82             |
| EBS1D2F                              | 316SS    | 2             | 32         | 7                  | 2" Flange  | Side in/bottom out with adjustable legs                    | 82             |
| Ordering Configurations (Size 3 & 4) |          |               |            |                    |            |  |                |
| EBG131T                              | 304SS    | 3             | 8          | 4                  | 1" NPT     | Side in/bottom out or side out design with adjustable legs | 24             |
| EBG141T                              | 304SS    | 4             | 14         | 4                  | 1" NPT     | Side in/bottom out or side out design with adjustable legs | 29             |

## Ordering Information

EB

S

Material of Construction

Code

Description

S

316 SST

1

Cartridge Qty.

1

Bag Length

Size

Inches

D

32

Inlet/Outlet Connection

Code

Size

2F

2" Flange

2T

2" NPT

EB

G

Material of Construction

Code

Description

G

304 SST

1

Cartridge Qty.

1

Bag Length

Size

Inches

3\*

8

4\*

14

S\*\*

16

D\*\*\*

32

Inlet/Outlet Connection

Code

Size

1T

1" NPT

2F

2" Flange

2T

2" NPT

\* Only avail. in 1" NPT  
 \*\* Only avail. in 2" NPT  
 \*\*\*Only avail. in 2" NPT & 2" Flange

| Size S (1) & D (2) Replacement Parts |                               | Size 3 & 4 Replacement Parts |                             |
|--------------------------------------|-------------------------------|------------------------------|-----------------------------|
| Part Number                          | Description                   | Part Number                  | Description                 |
| 2390-5003                            | Cover Bolt Assembly†          | 2390-5003                    | Cover Bolt Assembly†        |
| 4150-5835-E                          | O-ring, Cover EPDM            | 4154-5350                    | O-ring, Cover EPDM          |
| 4150-5835-N                          | O-ring, Cover Buna-N          | 4151-1350                    | O-ring, Cover Buna-N        |
| 4150-5835-V                          | O-ring, Cover FKM (Viton®)    | 4152-8350                    | O-ring, Cover FKM (Viton®)  |
| 4150-5834-E                          | O-ring, Basket EPDM           | 4154-5155                    | O-ring, Basket EPDM         |
| 4150-5834-N                          | O-ring, Basket Buna-N         | 4151-1155                    | O-ring, Basket Buna-N       |
| 4150-5834-V                          | O-ring, Basket FKM (Viton®)   | 4152-8155                    | O-ring, Basket FKM (Viton®) |
| 0370-5325                            | Basket, Double Length - 304SS | 0370-5366                    | Basket, #3                  |
| 0370-5343                            | Basket, Double Length - 316SS | 0370-5367                    | Basket, #4                  |
| 5020-5248                            | Retainer Bag - 304SS          | 5830-6004                    | Spring Retainer             |
| 5020-5254                            | Retainer Bag - 316SS          | 3420-5493                    | Leg Assembly #3 - 304SS     |
| 3420-5492                            | Leg Assembly Size 2 - 304SS   | 3420-5494                    | Leg Assembly #4 - 304SS     |
| 3420-5495                            | Leg Assembly Size 1 - 304SS   |                              |                             |

†Bolt assembly includes 1 each bolt, nut, washer, pin & retainer.

†Bolt assembly includes 1 each bolt, nut, washer, pin & retainer.

Specifications are subject to change without notification.  
 For User Responsibility Statement, see [www.parker.com/safety](http://www.parker.com/safety)



© 2010 Parker-Hannifin Corporation  
 domnick hunter Process Filtration - North America  
 All Rights Reserved  
 Fulflo is a registered trademark of Parker-Hannifin Corporation  
 Viton is a registered trademark of E.I. DuPont de Nemours & Co., Inc.

DS\_IP\_ EB Single Bag Vessel 2/14 Rev. D