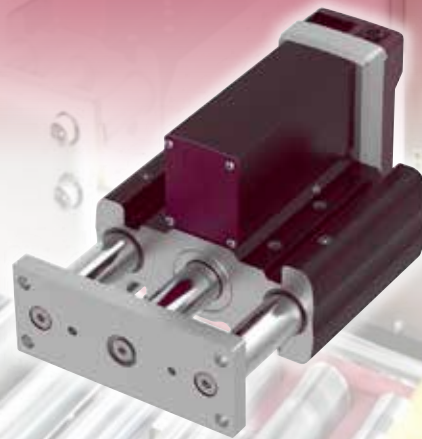


Stopper Cylinder EC-ST15



Features

- Ideal as a workpiece-stopper on a conveyor line without air source.
- Workpieces up to 50kg.
- Maximum collision speed of workpiece: 40m/min. (in case of 9kg workpiece)

Product model number	
Product model number	
EC-ST15	

Cable length	
Cable code	Cable length
0	without cable (connector included)
1 ~ 3	1 ~ 3m
4 ~ 5	4 ~ 5m
6 ~ 10	6 ~ 10m

Options	
Name	Option code
Brake	B
Non-motor end specification	NM
PNP specification	PN
Twin power supply specification	TMD2
Battery-less absolute encoder specification	WA
Wireless communication specification	WL
Wireless axis-operation specification	WL2

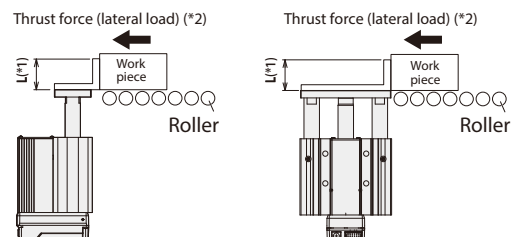
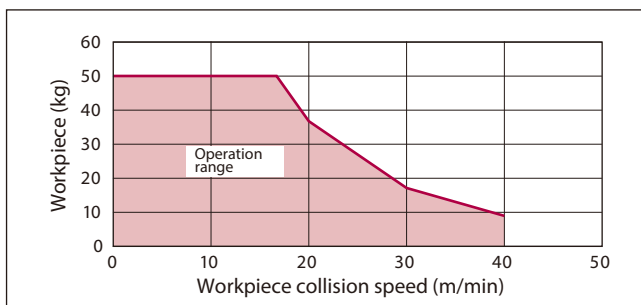
(Note 1) The home position of the standard specification is set on the non-motor side. Refer to the dimension drawing on back side for the home position.

Main specifications			
Lead		Ball screw lead (mm)	3
Horizontal	Payload (Note 2)	Payload (kg) (power-saving disabled)	5
		Maximum speed (mm/s)	200
	Speed/acceleration/deceleration	Minimum speed (mm/s)	4
		Rated acceleration/deceleration (G)	0.3
		Maximum acceleration/deceleration (G)	0.5
Vertical	Payload (Note 2)	Payload (kg) (power-saving disabled)	3
		Maximum speed (mm/s)	200
	Speed/acceleration/deceleration	Minimum speed (mm/s)	4
		Rated acceleration/deceleration (G)	0.3
		Maximum acceleration/deceleration (G)	0.5
Brake	Brake specification	non-exciting electromagneticbrake	
	Brake-holding force (kgf)		12.5
Stroke (mm)			50

(Note 2) Based on speed of 200mm/s and acceleration/deceleration of 0.5G.

Driving method	Ball screw Φ 10mm, Rolled C10
Positioning repeatability	\pm 0.15mm
Rod	Φ 25mm, Material: aluminum, hard alumite treatment
Guide shaft	S45C
Front bracket	S45C
Ambience operating temperature & humidity	0~40°C, 85%RH or less (non-condensing)
Degree of protection	IP20
Vibration and shock resistance	4.9m/s ²
Overseas standard	CE Marking, RoHS
Motor type	Stepper motor
Encoder type	Incremental / Battery-less absolute
Number of encoder pulses	800 pulse/rev

Chart of the correlation between mass and collision speed of the workpiece



(*1) Use within the dimension L=50mm or smaller.

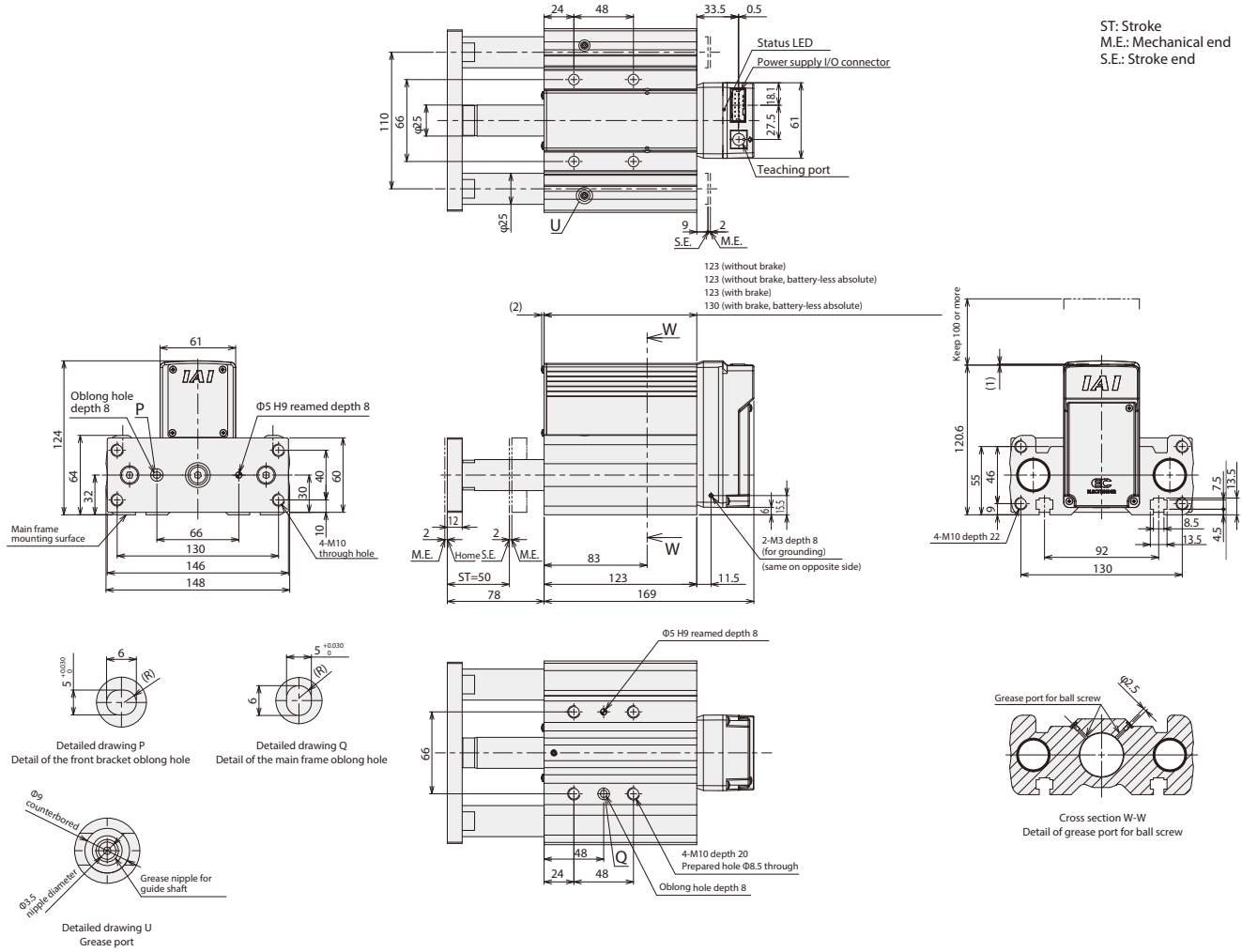
(*2) Allowable load of the thrust force by conveyor should be 500N or smaller.

Model specification items

EC	—	ST15	—	L	—	50	—	□	—	□
Series		Type		Lead		Stroke		Cable length		Option
				L: 3mm		50: 50mm		O: Terminal type with connector		B: Brake
								1 : 1mm		NM: Non-motor end specification
								2 : 2mm		PN: PNP specification
								10: 10mm		TMD2: Twin power supply specification
										WA: Battery-less absolute encoder specification
										WL: Wireless communication specification
										WL2: Wireless manual operation specification

Dimensions

(Note) When performing a home return, the rod moves to M.E. Beware of possible interference with peripheral equipment.



Mass

	Stroke (mm)	50
Mass (kg)	Without brake	5.06
	With brake	5.36

Controller

* The EC series is equipped with a built-in controller. Refer to the ELECYLINDER catalog for the details of the built-in controller.

IAI America, Inc.

USA Headquarter & Western Region (Los Angeles): 2690 W. 237th Street, Torrance, CA 90505 (800) 736-1712
Midwest Branch Office (Chicago) : 110 E. State Pkwy, Schaumburg, IL 60173 (800) 944-0333
Southeast Branch Office (Atlanta): 1220 Kennestone Circle, Suite 108, Marietta, GA 30066 (888) 354-9470
www.intelligentactuator.com

JAPAN Headquarters: 577-1 Obane, Shimizu-ku, Shizuoka-shi, Shizuoka, 424-0103, JAPAN
 The information contained in this product brochure may change without prior notice due to product improvements.

IAI Industrieroboter GmbH
 Ober der Röth 4, D-65824 Schwalbach am Taunus, Germany
IAI (Shanghai) Co., Ltd.
 Shanghai Jiahua Business Center A8-303, 808, Hongqiao Rd., Shanghai 200030, China
IAI Robot (Thailand) Co., Ltd.
 825 Phairokjijja Tower 12th Floor, Bangna-Trad RD., Bangna, Bangkok 10260, Thailand